



Roofing and Cladding Fixings

Contents.

Find what you need quickly...

Introduction	03
Drilltite Carbon Steel Single/Double Skin Fixings	05
Drilltite Carbon Steel Composite Panel Fixings	06
Carbon Self Drilling Screws for Timber Purlins	07
Stitchers	08
Specialist Stitchers	09
Drilltite Stainless Steel Single/Double Skin Fixings	11
Drilltite Stainless Steel Composite Panel Fixings	12
Other Specialist Stainless Fixings	13
Colortite Moulded Nylon Heads Carbon Steel	15
Colortite SD Stainless Steel	18
Steel Frame Clip Fix	20
Low Profile Fixings Carbon Steel	21
Low Profile Fixings Stainless Steel	23
Rivets	24
Timber to Steel Carbon Fixings	26
Timber to Stainless Steel Fixings	27
Fibre Cement Fixings	28
Stainless Countersunk Woodscrews	30
Self-Tapping Fixings	31
Con-Fix	32
Insulation Support	33
Chemical Fixings and Accessories	34
Anchor Bolts	36
Frame Fixings/Hammer Fixings	37
Additional Products	38
Colour Range and Options	41
Quality and Reliability	42



Roofing & Cladding Fixings.

Here you'll find an extensive range of self drilling fixings together with associated rivets and sundries for use with most of the popular metal roofing and cladding systems to be found in the UK.

Products are set out by application; fixings for single skin, double skin, composite panel, standing seam, timber, fibre cement and roof lights are laid out in a clear and easily understood format.

We have deliberately limited the technical content; if you seek in-depth written material including COSHH, maintenance and performance data sheets, you can download them direct from the technical section of our website at fixingpoint.com, or contact our technical department.

Our self drilling fixings are manufactured from two materials, carbon steel and austenitic stainless steel.

Carbon steel products are used for most mainstream applications, offering good drilling performance, reliable pull out resistance and, thanks to our high level of corrosion protection, a long service life. Carbon steel products are our most economical fixing format.

Stainless steel products enjoy an extended life expectancy since the austenitic material has exceptional corrosion resistance. However austenitic stainless steel cannot form a drill tip that will drill mild steel, and so a non-stainless steel tip is added to the stainless steel fixing body. 304 Grade stainless steel is not recommended for coastal or extreme corrosive environments.

This format is the familiar 'bi-metal' self drilling fixing that is used extensively where durability and compatibility with other metals are required. In particular, these fixings are used for fixing aluminium roofing systems where galvanic reactions can cause rapid corrosion of mismatched components.

Both our stainless and carbon steel fixing ranges are available with a 'Colortite' precision-moulded coloured nylon head, which provides washer protection, extended head durability and the opportunity to blend in the fixing colour with the weather sheet.


Colortite products are insert moulded onto our standard Drilltite stock; this exceptionally reliable process gives great strength and precision and a long term, maintenance-free finish. Colortite moulded heads can be supplied with 16mm, 19mm or 29mm diameter sealing washers to suit the application.

We've also included our latest Drilltite 'LP' low profile range for the ultimate in discrete unobtrusive fastening. LP products can be supplied with a powder coated head to match most common sheet finishes. Our self drilling fixings are supplied in two ranges based on their drilling and tapping ability.

Light section fixings work in thinner, cold rolled steels ranging from 1.2mm up to 4mm. Generally, light section fixings have a short drill tip and a coarse, 'wood screw' type thread, to tap and grip thin sheet materials. Typical applications are for fixing outer weather sheets to our Gridtite spacer bar or for fixing liner sheets to sheeting rails.

Heavy section fixings have a longer drill tip and finer threads; they take over from light section fixings at 4mm and will cope with hot rolled steel up to 12mm. Use heavy section fixings for attaching sheets or Gridtite brackets to structural steelwork.

Alongside the light and heavy section fixings, we have a whole range of products for other, allied, applications. For example fixing steel to timber, or timber to steel; repair stitchers, side lap fixings, roof light fixings, rivets, sleeve fixings, masonry self tappers and many others. Because our range is constantly changing, some items may not appear in this publication; contact Fixing Point for the latest developments.



What do the codes mean?

Our codes reflect the size, type and performance of the product. The first two or three letters describe the product type, the next number placed adjoining the first letters describes the drilling and tapping range, so 2 = 2mm, 3 = 3mm and so on. (Not all codes have this range number)

Fixing Codes

DT: Drilltite Fixing

CT: Colortite Nylon Head

LP: Low Profile

LS: Stitcher

SD: Stainless Drilltite

TFD & TD: Timber to Steel Fixing

DST: Steel to Timber Fixing

TH & TF: Masonry Fixing

FC: Fibre Cement

TSAB: Stainless Steel Self Tapping

HT: High Thread Composite Panel Fixing

For example:

DTHT is a light section high thread composite panel fixing.

DT12HT is a heavy section high thread composite panel fixing.

Fixing Diameters

Fixing Diameters are equivalent to: 4.8, 5.5, 6.3, or 7.8. HT high threads are always the same body size so we don't list their diameters, and for convenience we sometimes omit fixing diameters from other sizes too.

Then a two or three digit number which is the fixing length (not the effective thread length).

If a washer is required it will appear after the length as G16, G19, G29 (16, 19 & 29mm diameter galvanised) or S16, S19 or S29 for stainless steel versions.

Colour Codes

Colour codes for Colortite and painted products appear before the rest of the product code; for BS colours this might be 10A05 or 12B27 etc, for RAL colours RAL 9006 etc. Users should specify the colour when ordering, using the correct code to ensure correct matching.

Some codes feature several of the above linked together, for example 10A05 CTHT 125 G16 is a Goosewing Grey, Colortite head, carbon steel, light section, high thread, 125mm long with a 16mm dia. galvanised washer.

Drilltite Carbon Steel Single/Double Skin Fixings.

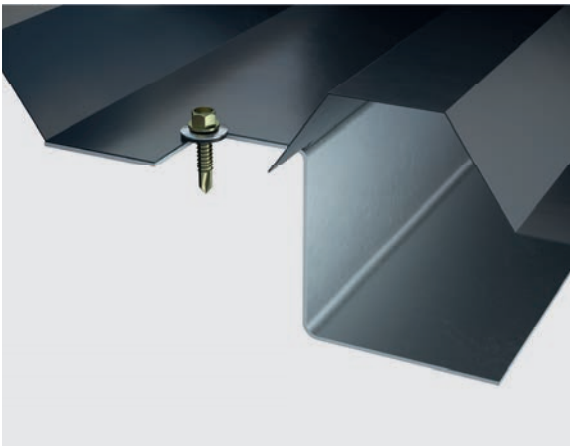
Light Section Fixings

Drill and fix into cold rolled steel



Product Code	*ETL	Drilling Capacity
DT220	7mm	1.2 to 3mm
DT325	12mm	1.2 to 3mm
DT435	22mm	1.2 to 4mm
DT443	30mm	1.2 to 4mm
DT450	37mm	1.2 to 4mm
DT457	44mm	1.2 to 4mm
DT470	57mm	1.2 to 4mm

Galvanised or stainless steel washers available in 16, 19 or 29mm.



Heavy Section Fixings

Drill and fix into hot rolled steel



Product Code	*ETL	Drilling Capacity
DT1022	7mm	4 to 8mm
DT1232	10mm	4 to 12mm
DT1240	18mm	4 to 12mm
DT1260	38mm	4 to 12mm
DT1280	58mm	4 to 12mm

Galvanised or stainless steel washers available in 16, 19 or 29mm.



*ETL is the Effective Thread Length – the usable portion of the Fixing.

Drilltite Carbon Steel Composite Panel Fixings.

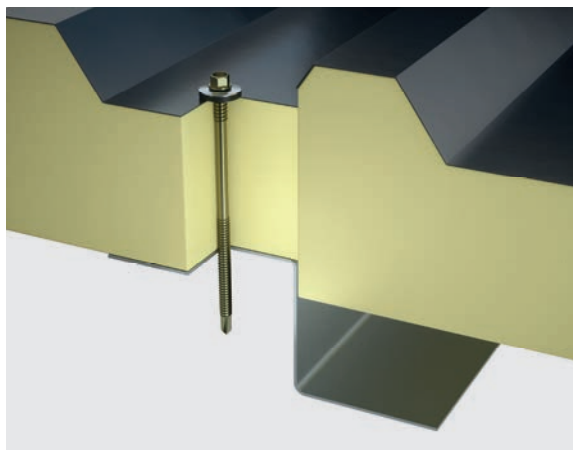
Light Section Fixings

Drill and fix into cold rolled steel



Product Code	Suits Panel Thickness	Drilling Capacity
DTHT65	30 – 40mm	1.2 to 4mm
DTHT80	40 – 55mm	1.2 to 4mm
DTHT100	45 – 75mm	1.2 to 4mm
DTHT125	70 – 100mm	1.2 to 4mm
DTHT150	90 – 125mm	1.2 to 4mm
DTHT175	115 – 150mm	1.2 to 4mm
DTHT200	140 – 175mm	1.2 to 4mm
DTHT225	165 – 200mm	1.2 to 4mm
DTHT250	175 – 225mm	1.2 to 4mm

Galvanised or Stainless washers available in 16, 19 or 29mm.



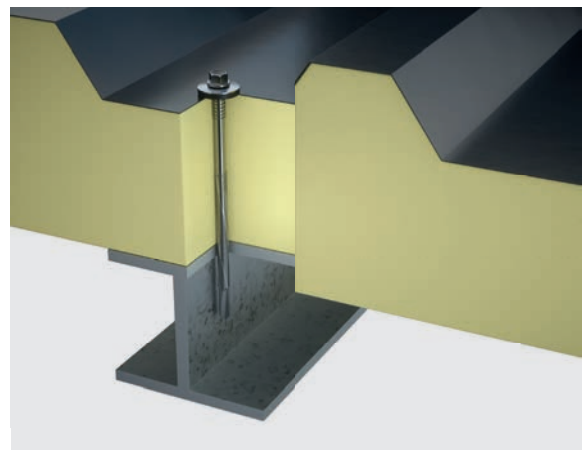
Heavy Section Fixings

Drill and fix into hot rolled steel



Product Code	Suits Panel Thickness	Drilling Capacity
DT12HT85	25 – 50mm	4 to 12mm
DT12HT105	35 – 70mm	4 to 12mm
DT12HT120	50 – 85mm	4 to 12mm
DT12HT150	80 – 115mm	4 to 12mm
DT12HT185	110 – 150mm	4 to 12mm
DT12HT240	150 – 205mm	4 to 12mm

Galvanised or Stainless washers available in 16, 19 or 29mm.



Carbon Self Drilling Screws for Timber Purlins.

Steel to Timber Gash Point

Max steel thickness is 2 × 0.9mm



Product Code	Size
DST25	6.3 × 25mm
DST32	6.3 × 32mm
DST45	6.3 × 45mm

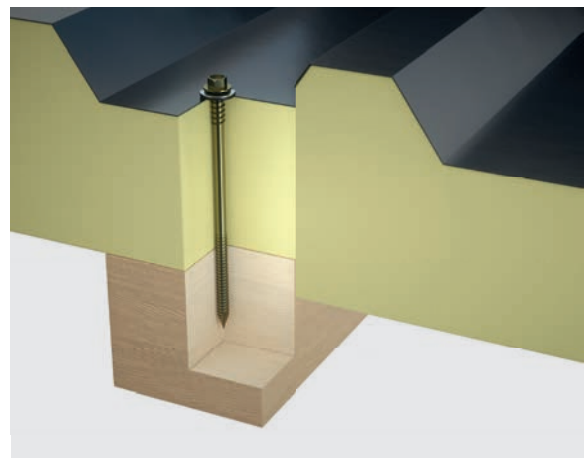
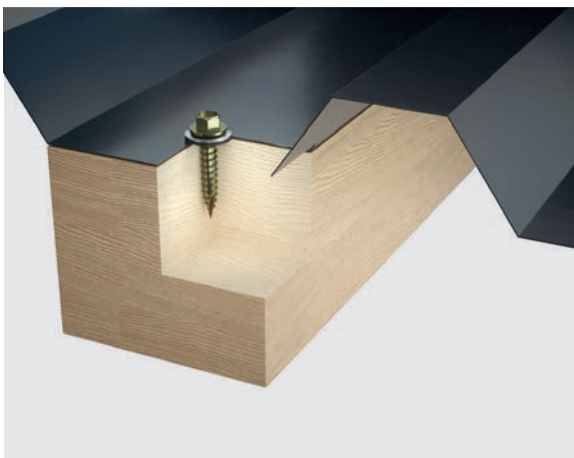
Galvanised or stainless washers available in 16, 19 or 29mm.

Composite Panel to Timber Gash Point



Product Code	Suits Panel Thickness
DSTHT60	20 – 25mm
DSTHT80	20 – 40mm
DSTHT100	40 – 60mm
DSTHT120	60 – 80mm
DSTHT160	80 – 120mm
DSTHT200	110 – 160mm

Galvanised or stainless washers available in 16, 19 or 29mm.



Stitchers.

Carbon Stitchers

For Side Laps



Product Code	Size	Type
LS220	4.8 × 20mm	Mini Stitcher
LS225	6.3 × 25mm	Standard Stitcher
MLS225	7.8 × 25mm	Mega Stitcher (Repair)

Galvanised or stainless washers available in 16, 19 or 29mm.

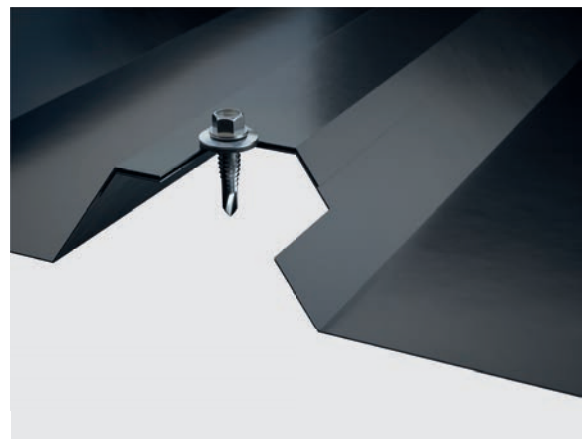
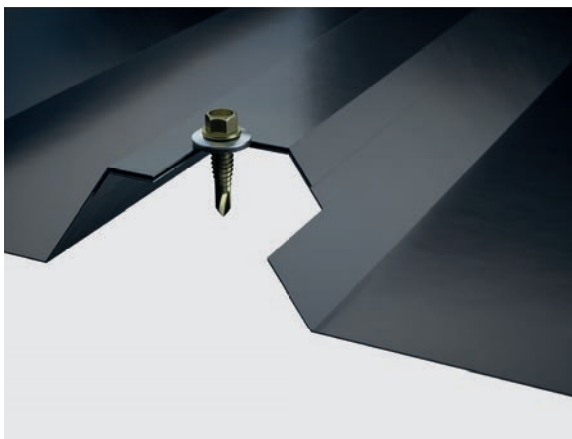
Stainless Stitchers

For Side Laps



Product Code	Size	Type
SLS225	6.3 × 25mm	Standard Stitcher
SMLS233	7.5 × 33mm	Mega Stitcher

Stainless washers available in 16, 19 or 29mm.
A2/304 Grade stainless steel.



Specialist Stitchers.

Laplox

Requires 10mm pilot hole



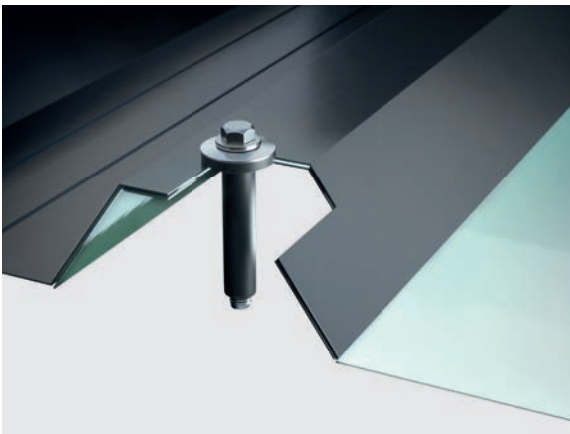
Product Code

LAPLOX25

LAPLOX38

Comes with S19 washer. Colorite version available.

LAPLOX is designed to give a trouble-free solution to the problem of securing side laps on Translucent Sheets. The stainless steel fixing and washer with an E.P.D.M. sleeve, gives a corrosion-free fastener that is resistant to U.V. and pollutants.



Lapfix

Requires 10mm pilot hole



Product Code

LAPFIX

Ideal for side laps on Fibre Cement Sheets. Carbon steel fixing, E.P.D.M. sleeve, sealing washer cap.



Specialist Stitchers.

FAB-LOK Compression Fixings

Requires 9mm pilot hole



Product Code	Screw Material	Rivet/Sleeve Material	Gripe Range	Penetration Length
FAB 10 - 4	304 Stainless Steel	5052-H32 ALUMINUM	1.6mm - 6.35mm	35mm

Grip range is total material thickness Fab-Lok will fasten.

Fab-Lok Compression Fixings for Metal Cladding and Non-Metallic Sheets.

Fab-Lok compression fixings are universal with virtually unlimited uses. They may be used as structural fixings to secure lighter metals to heavier steel framing. Fab-Lok fixings are excellent side lap fixings. In areas of high or unusual wind conditions. Severe vibration or structural racking. High rate of expansion and contraction.



Drilltite Stainless Steel Single/Double Skin Fixings.

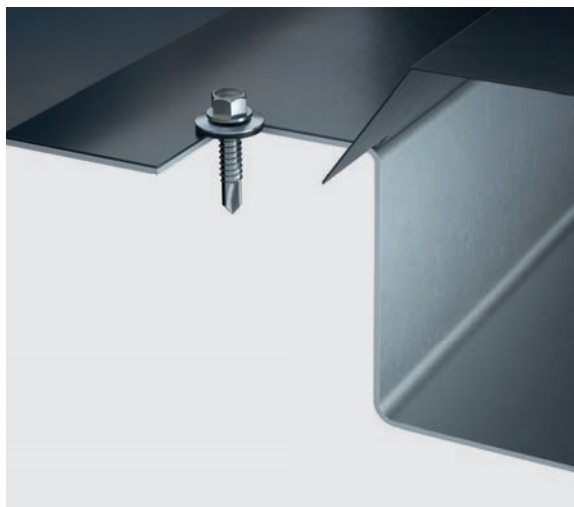
Light Section Fixings

Drill and fix into cold rolled sections



Product Code	*ESL	Drilling Capacity
SD325	9mm	1.2 to 3mm
SD435	18mm	1.2 to 4mm
SD450	33mm	1.2 to 4mm
SD465	48mm	1.2 to 4mm

Stainless washers available in 16, 19 or 29mm.
A2/304 Grade stainless steel.



Heavy Section Fixings

Drill and fix into hot rolled sections



Product Code	*ESL	Drilling Capacity
SD1240	13mm	4 to 12mm
SD1260	33mm	4 to 12mm
SD1280	53mm	4 to 12mm

Stainless washers available in 16, 19 or 29mm.
A2/304 Grade stainless steel.



*ESL = Effective Stainless Length.

Drilltite Stainless Steel Composite Panel Fixings.

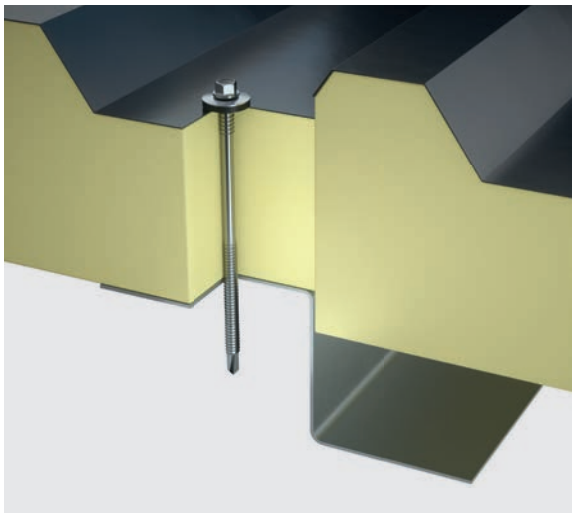
Light Section Fixings

Drill and fix into cold rolled sections



Product Code	Suits Panel Thickness	Drilling Capacity
SDHT65	25 – 40mm	1.2 to 4mm
SDHT80	40 – 55mm	1.2 to 4mm
SDHT110	45 – 85mm	1.2 to 4mm
SDHT125	60 – 100mm	1.2 to 4mm
SDHT150	85 – 125mm	1.2 to 4mm
SDHT180	115 – 155mm	1.2 to 4mm
SDHT200	135 – 175mm	1.2 to 4mm
SDHT230	165 – 205mm	1.2 to 4mm
SDHT250	185 – 225mm	1.2 to 4mm

Stainless washers available in 16, 19 or 29mm.
A2/304 Grade stainless steel.



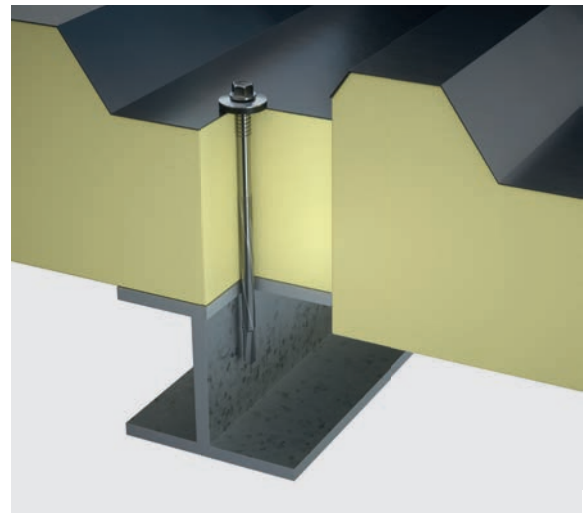
Heavy Section Fixings

Drill and fix into hot rolled sections



Product Code	Suits Panel Thickness	Drilling Capacity
SD12HT75	25 – 35mm	4 to 12mm
SD12HT85	30 – 45mm	4 to 12mm
SD12HT100	30 – 60mm	4 to 12mm
SD12HT125	50 – 85mm	4 to 12mm
SD12HT150	85 – 110mm	4 to 12mm
SD12HT195	120 – 155mm	4 to 12mm
SD12HT225	150 – 185mm	4 to 12mm
SD12HT250	175 – 210mm	4 to 12mm

Stainless washers available in 16, 19 or 29mm.
A2/304 Grade stainless steel.



Other Specialist Stainless Fixings.

Stainless Halter Bracket Fixings



Product Code	Drilling Capacity	Size
DXH37	0.7 – 1.6mm	6.3 × 37mm
DXH237	1.2 – 3.0mm	6.3 × 37mm
DXH47	1.2 – 3.0mm	6.3 × 47mm

Stainless washers available in 16, 19 or 29mm.
A2/304 Grade stainless steel.



Halter design courtesy of BEMO

Stainless Sheet to Timber Gash Point

Max steel thickness is 2 × 0.9mm



Product Code	Size
SDST50	6.5 × 50mm
SDST75	6.5 × 75mm

Stainless washers available in 16, 19 or 29mm.
A2/304 Grade stainless steel.



Other Specialist Stainless Fixings.

Stainless Countersunk Composite Panel Fixings

Light Section Fixings



Product Code	Suits Panel Thickness	Drilling Capacity
SSCSKCP75	Up to 50mm	1.2 – 3mm
SSCSKCP125	50 – 100mm	1.2 – 3mm
SSCSKCP150	80 – 125mm	1.2 – 3mm
SSCSKCP180	100 – 155mm	1.2 – 3mm
SSCSKCP200	120 – 175mm	1.2 – 3mm

A2/304 Grade stainless steel.

Heavy Section Fixings

Product Code	Suits Panel Thickness	Drilling Capacity
SSCSK12CP100	Up to 60mm	4 – 12mm
SSCSK12CP120	60 – 80mm	4 – 12mm
SSCSK12CP150	70 – 100mm	4 – 12mm
SSCSK12CP200	120 – 160mm	4 – 12mm

A2/304 Grade stainless steel.

Stainless Annular Ring Shank Nails

High Pull Out Into Timber



Product Code	Size
SSANNULAR2.65X30	2.65 × 30mm
SSANNULAR2.65X40	2.65 × 40mm
SSANNULAR2.65X50	2.65 × 50mm
SSANNULAR3.35X50	3.35 × 50mm
SSANNULAR3.35X65	3.35 × 65mm
SSANNULAR3.75X75	3.75 × 75mm

Please note these are sold by weight and only in boxes of 5kg. A2/304 Grade stainless steel.

Colortite Moulded Nylon Heads Carbon Steel.

Colortite Moulded Nylon Heads can be added to most Drilltite fixings up to 250mm long. Colours match most common sheet finishes. Offering greatly improved corrosion resistance, the Colortite head is factory applied for a tough and durable finish. When ordering, provide B.S or R.A.L colour code, then fixing code. **Example 10A05CTS25G16.**

For Single/Double Skin

Light Section Fixings



Product Code	Drilling Capacity	ETL
CT325	1.2 - 3mm	12mm
CT435	1.2 - 4mm	22mm
CT443	1.2 - 4mm	30mm
CT450	1.2 - 4mm	37mm
CT457	1.2 - 4mm	44mm
CT470	1.2 - 4mm	57mm

Galvanised or stainless washers available in 16, 19 or 29mm.

For Composite Panels

Light Section Fixings



Product Code	Suits Panel Thickness	Drilling Capacity
CTHT65	30 - 40mm	1.2 to 4mm
CTHT80	40 - 55mm	1.2 to 4mm
CTHT100	45 - 75mm	1.2 to 4mm
CTHT125	70 - 100mm	1.2 to 4mm
CTHT150	90 - 125mm	1.2 to 4mm
CTHT175	115 - 150mm	1.2 to 4mm
CTHT200	140 - 175mm	1.2 to 4mm
CTHT225	165 - 200mm	1.2 to 4mm
CTHT250	175 - 225mm	1.2 to 4mm

Galvanised or stainless washers available in 16, 19 or 29mm.

Colortite Moulded Nylon Heads Carbon Steel.

Colortite Moulded Nylon Heads can be added to most Drilltite fixings up to 250mm long. Colours match most common sheet finishes. Offering greatly improved corrosion resistance, the Colortite head is factory applied for a tough and durable finish. When ordering, provide B.S or R.A.L colour code, then fixing code. **Example 10A05CTS25G16.**

For Single/Double Skin

Heavy Section Fixings



Product Code	Drilling Capacity	ETL
CT1235	4 - 12mm	10mm
CT1240	4 - 12mm	18mm
CT1260	4 - 12mm	38mm
CT1280	4 - 12mm	58mm

Galvanised or stainless washers available in 16, 19 or 29mm.

For Composite Panels

Heavy Section Fixings



Product Code	Suits Panel Thickness	Drilling Capacity
CT12HT85	25 - 50mm	4 to 12mm
CT12HT105	35 - 70mm	4 to 12mm
CT12HT120	50 - 85mm	4 to 12mm
CT12HT150	80 - 115mm	4 to 12mm
CT12HT185	110 - 150mm	4 to 12mm
CT12HT240	150 - 205mm	4 to 12mm

Galvanised or stainless washers available in 16, 19 or 29mm.

Colortite Moulded Nylon Heads Carbon Steel.

Carbon Stitchers

For Side Laps



Product Code	Type	Size
CTS25	Standard Stitcher	6.3 × 25mm
MCTS25	Repair Stitcher	7.8 × 25mm

Galvanised or stainless washers available in 16, 19 or 29mm.

Composite Panel to Timber Gash Point

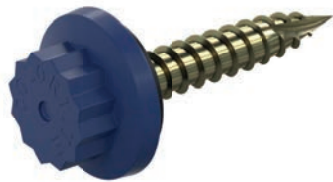


Product Code	Suits Panel Thickness
CTTHT60	20 – 25mm
CTTHT80	20 – 40mm
CTTHT100	40 – 60mm
CTTHT120	60 – 80mm
CTTHT160	80 – 120mm
CTTHT200	110 – 160mm

Galvanised or stainless washers available in 16, 19 or 29mm.

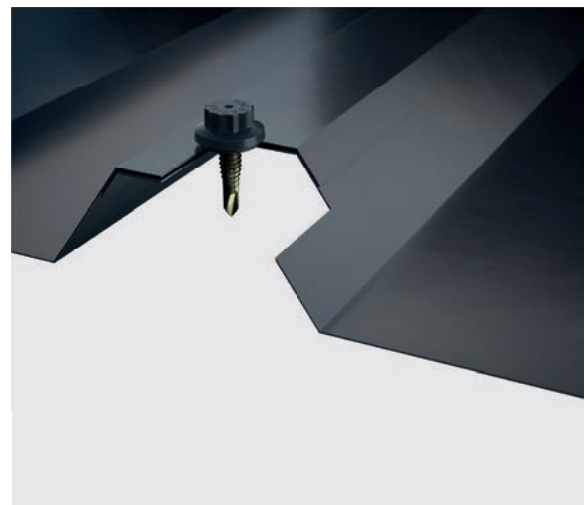
Steel to Timber Gash Point

Max steel thickness is 2 × 0.9mm



Product Code	Size
CTT25	6.3 × 25mm
CTT32	6.3 × 32mm
CTT45	6.3 × 45mm

Galvanised or stainless washers available in 16, 19 or 29mm.



Colortite SD Stainless Steel.

The integration of the durable Drilltite SD Stainless steel fixing with the Colortite Nylon Moulded head produces a fixing with exceptional resistance to weathering and corrosion. The high quality Colortite finish is available in a wide range of colours to match or contrast with sheeting and cladding systems, enabling designers to take full advantage of the tough stainless steel element whilst retaining lasting colour appeal.

Stainless washers available in 16, 19 or 29mm.

For Single/Double Skin

Light Section Fixings



Product Code	Drilling Capacity
SCT325	1.2 – 3mm
SCT435	1.2 – 4mm
SCT450	1.2 – 4mm
SCT465	1.2 – 4mm

A2/304 Grade stainless steel.

For Single/ Double Skin

Heavy Section Fixings



Product Code	Drilling Capacity
SCT1240	4 – 12mm
SCT1260	4 – 12mm

A2/304 Grade stainless steel.

For Composite Panels

Light Section Fixings



Product Code	Suits Panel Thickness	Drilling Capacity
SCTHT65	25 – 40mm	1.2 to 4mm
SCTHT80	40 – 55mm	1.2 to 4mm
SCTHT110	45 – 85mm	1.2 to 4mm
SCTHT125	60 – 100mm	1.2 to 4mm
SCTHT150	85 – 125mm	1.2 to 4mm
SCTHT180	115 – 155mm	1.2 to 4mm
SCTHT200	135 – 175mm	1.2 to 4mm
SCTHT230	165 – 205mm	1.2 to 4mm
SCTHT250	185 – 225mm	1.2 to 4mm

Product Code	Suits Panel Thickness	Drilling Capacity
SCT12HT75	25 – 35mm	4 to 12mm
SCT12HT85	30 – 45mm	4 to 12mm
SCT12HT100	30 – 60mm	4 to 12mm
SCT12HT125	50 – 85mm	4 to 12mm
SCT12HT150	85 – 110mm	4 to 12mm
SCT12HT195	120 – 155mm	4 to 12mm
SCT12HT225	150 – 185mm	4 to 12mm
SCT12HT250	175 – 210mm	4 to 12mm

A2/304 Grade stainless steel.

Colortite SD Stainless Steel.

Stainless Stitchers

Max 2 × 1mm thick sheets



Product Code	Size
SCTS25	6.3 × 25mm
SMCTS33	7.5 × 33mm

Stainless washers available in 16, 19 or 29mm.
A2/304 Grade stainless steel.



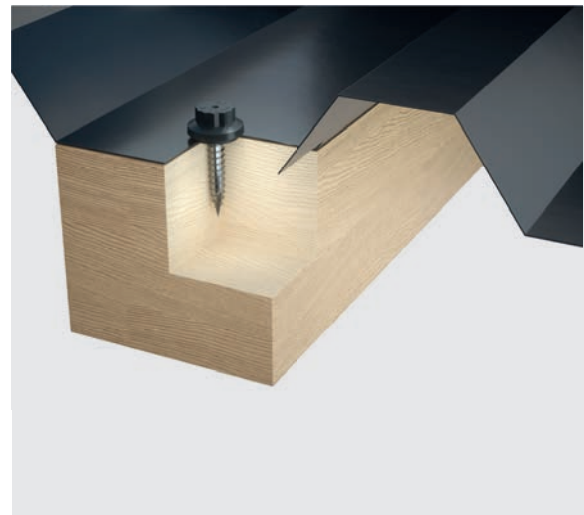
Stainless Sheet to Timber Gash Point

Max thickness 2 × 0.9mm



Product Code	Size
SCTT50	6.5 × 50mm
SCTT75	6.5 × 75mm

Stainless washers available in 16, 19 or 29mm.
A2/304 Grade stainless steel.



Steel Frame Clip Fix.

Clip Fix

Clip fixings for steel frames pancake head



Product Code	Size	Drilling Capacity
CF326	5.5 × 26mm	1.2 – 4mm
CF1238	5.5 × 38mm	4 – 12mm

Self Coring Carbon Fixing

Fixings for Topdek panels



Product Code	Size	Drilling Capacity
TD5.5X30	5.5 × 30mm	1.2 – 4mm
TD1245	5.5 × 45mm	4 – 12mm

Low Profile Fixings Carbon Steel.

Light Section Fixings

Drill and fix into cold rolled sections



Product Code	*ETL	Drilling Capacity
LP325	13mm	1.2 to 3mm
LP438	26mm	1.2 to 4mm
LP457	45mm	1.2 to 4mm
LP470	58mm	1.2 to 4mm

Provided with P10 EPDM rubber washer.



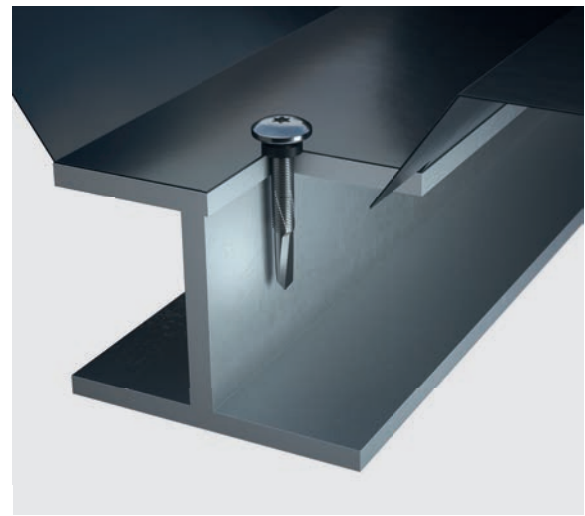
Heavy Section Fixings

Drill and fix into hot rolled sections



Product Code	*ETL	Drilling Capacity
LP1238	17mm	4 to 12mm
LP1250	29mm	4 to 12mm
LP1267	46mm	4 to 12mm

Provided with P10 EPDM rubber washer.



*ETL is the Effective Thread Length – the usable portion of the fixing.

Low Profile Fixings Carbon Steel.

Carbon Stitchers

For Side Laps



Product Code	Size
LPS25	6.3 x 22mm

Available with P10 EPDM rubber washer or G12 galvanised washer.

Composite Panel to Light Section

Drill and fix into cold rolled sections



Product Code	Suits Panel Thickness
LPHT75	40 – 60mm
LPHT115	60 – 95mm

Provided with P10 EPDM rubber washer.

Steel to Timber



Product Code	Size
LPT4835	4.8 x 35mm

Provided with P10 EPDM rubber washer.

Powder Coated Finish



Powder coated finish available. Please consult a member of our sales team for more information.

Low Profile Fixings Stainless Steel.

Light Section Fixings

Drill and fix into cold rolled sections



Product Code	*ESL	Drilling Capacity
SLP325	10mm	1.2 to 3mm
SLP438	23mm	1.2 to 4mm
SLP450	30mm	1.2 to 4mm
SLP480	60mm	1.2 to 4mm

Available with 12mm stainless washer or P10 EPDM rubber washer.
A2/304 Grade stainless steel.

Composite Panel to Light Section



Product Code	Suits Panel Thickness
SLPHT130	55 - 110mm

Available with 12mm stainless washer or P10 EPDM rubber washer.
A2/304 Grade stainless steel.

*ESL = Effective Stainless Length.

Heavy Section Fixings

Drill and fix into hot rolled sections



Product Code	*ESL	Drilling Capacity
SLP1240	16mm	4 to 12mm
SLP1260	36mm	4 to 12mm
SLP1280	56mm	4 to 12mm

Available with 12mm stainless washer or P10 EPDM rubber washer.
A2/304 Grade stainless steel.

Steel to Timber



Product Code	Size
SLPT35	4.8 x 35mm

Available with 12mm stainless washer or P10 EPDM rubber washer.
A2/304 Grade stainless steel.

Rivets.

Multi Grip Rivets

A versatile rivet available in a wide range of colours



Product Code	Grip Range	Length
MG4810	1.0 – 6.0mm	10mm
MG4815	5.0 – 10.5mm	15mm

Pilot hole drill size = 4.9/5.1mm
Spiked caps to be used with the above.
Available in painted finish.

Griptite Rivets

A Versatile waterproof rivet for trimline gutters & construction applications



Product Code	Grip Range	Length
GR3	0.5 – 4.8mm	17.5mm
GR4	1.5 – 6.4mm	19.1mm
GR6	4.8 – 9.5mm	22.2mm
GR8	7.9 – 12.7mm	25.4mm
GR10	11.1 – 15.9mm	28.6mm
GR12	14.3 – 19.1mm	31.8mm

Pilot hole drill size = 5.3mm
Small round caps to be used with the above.

Firewall Rivets

Steel mandrel & body typically used for firewall applications



Product Code	Grip Range	Length
FWR3210	1.1 – 4.0mm	10mm
FWR4.8	5.0 – 7.0mm	12.0mm

Also available in white.

Spike Cap

To be used with Multi Grip & Sealtite Rivets



Small Round Cap

To be used with Griptite Rivets



Available in a wide range of colours, please consult our sales team.

Rivets.

Rivets rely on expansion to fix materials together as they're usually too thin to allow thread forming. As a result rivets are rated by their tensile strength rather than pull out values.

Rivets are also required in applications where a very flush head is required to be as unobtrusive as possible. An accurate pilot hole is essential for best results, oversized holes can lead to loss of grip and premature failure.

Sealtite Rivets

A closed end low profile dome head



Product Code	Material	Length	Grip Range
STR4811	Steel/ Aluminium	11.0mm	4.5 – 6.0mm
STR4811SS	Stainless/ Aluminium	11.0mm	4.5 – 6.0mm
STR4814	Steel/ Aluminium	14.0mm	7.5 – 9.0mm
STR4814SS	Stainless/ Aluminium	14.0mm	7.5 – 9.0mm

Pilot hole drill size = 4.9/5.1mm
Spiked caps to be used with the above.
Available in painted finish.

Large Flange Rivets

All stainless steel, for fixing a variety of materials without causing damage to panel surfaces



Product Code	Grip Range	Length
LFRSS4810	2.5 – 5.0mm	10.5mm
LFRSS4813	5.0 – 8.5mm	13.5mm
LFRSS4817	8.5 – 12mm	17.2mm
LFRSS4820	12.0 – 15.5mm	20.5mm
LFRSS4823	15.5 – 18.5mm	23.5mm

Pilot hole drill size = 4.9/5.1mm
Other rivets available, please consult our sales team.

Timber to Steel Carbon Fixings.

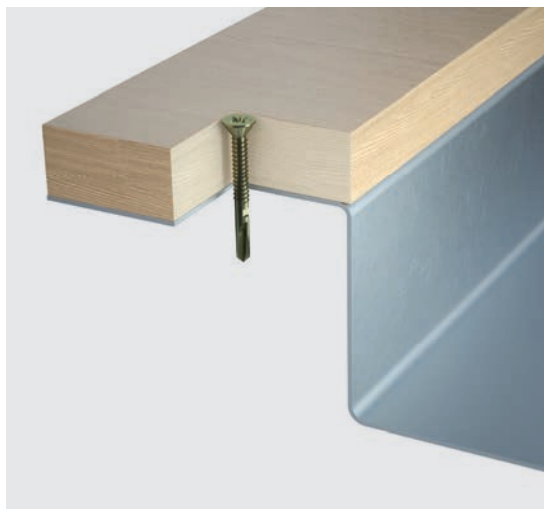
Timberfast drill a clearance hole through the timber with the reamer wings. The wings break off when they come into contact with the steel, enabling drilling to continue through the steel giving a firm positive fix every time.

Timber to Light Section

Pozidrive Countersunk Head



Size	MAX Timber Thickness	Drilling Capacity	Diameter
TFD40	20mm	1.2 – 4mm	4.8mm
TFD5.540	17mm	1.2 – 4mm	5.5mm
TFD60	37mm	1.2 – 4mm	5.5mm
TFD80	57mm	1.2 – 4mm	5.5mm
TFD110	87mm	1.2 – 4mm	5.5mm
TFD460	30mm	3.0 – 5.0mm	5.5mm



Timber to Heavy Section

Pozidrive Countersunk Head



Size	MAX Timber Thickness	Drilling Capacity	Diameter
TFD1260	25mm	4 – 12mm	5.5mm
TFD1285	50mm	4 – 12mm	5.5mm
TFD12110	75mm	4 – 12mm	5.5mm
TFD12130	95mm	4 – 12mm	5.5mm
TFD12150	115mm	4 – 12mm	5.5mm



Timber to Steel Stainless Fixings.

Timber to Light Section

Pozidrive Countersunk Head



Size	MAX Timber Thickness	Drilling Capacity	Diameter
SSTFD45	20mm	1.2 – 4mm	4.8mm
SSTFD65	40mm	1.2 – 4mm	5.5mm
SSTFD80	55mm	1.2 – 4mm	5.5mm

A2/304 Grade stainless steel.



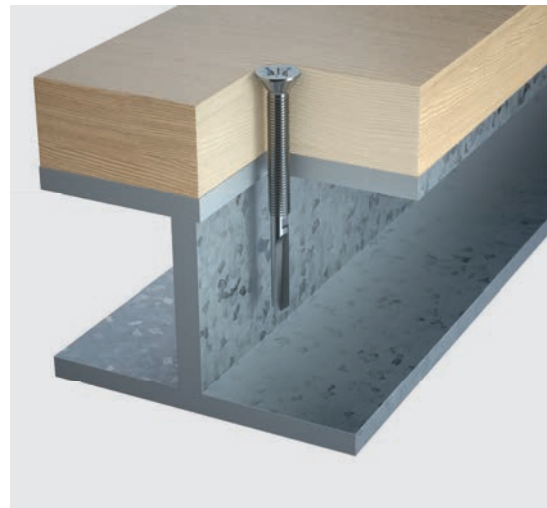
Timber to Heavy Section

Pozidrive Countersunk Head



Size	MAX Timber Thickness	Drilling Capacity	Diameter
SSTFD1260	20mm	4 – 12mm	5.5mm
SSTFD1280	40mm	4 – 12mm	5.5mm

A2/304 Grade stainless steel.



Fibre Cement Fixings.

For crown fixing of fibre cement roof sheets, an easy to use alternative to hook bolts on roofs up to 15° pitch. Supplied with stainless steel and rubber baz washer. It is imperative for roof pitches above 15° that you consult Fixing Point for advice.

Light Section Fixing

Drill and fix into cold rolled steel



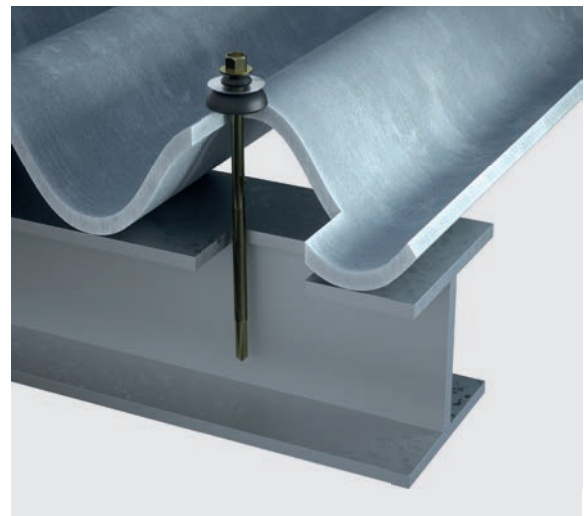
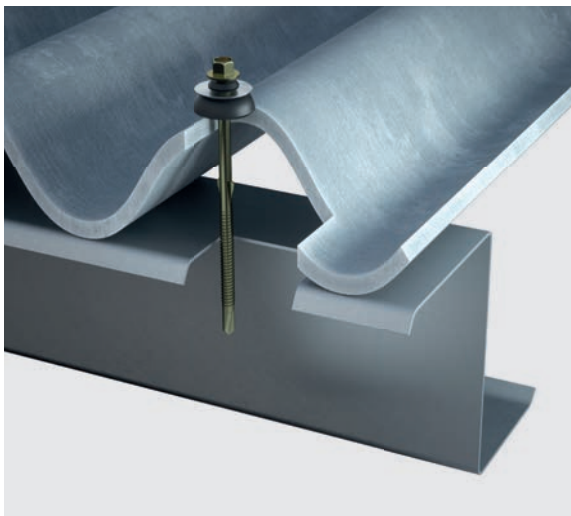
Product Code	Build Up	Drilling Capacity
FC110BAZ	45 – 80mm	1.2 – 4mm
FC130BAZ	70 – 100mm	1.2 – 4mm
FC150BAZ	80 – 115mm	1.2 – 4mm
FC190BAZ	70 – 150mm	1.2 – 4mm
FC230BAZ	140 – 190mm	1.2 – 4mm

Heavy Section Fixings

Drill and fix into hot rolled steel



Product Code	Build Up	Drilling Capacity
FC12125BAZ	45 – 80mm	4 – 12mm
FC12150BAZ	70 – 100mm	4 – 12mm
FC12180BAZ	100 – 130mm	4 – 12mm
FC12200BAZ	120 – 150mm	4 – 12mm
FC12235BAZ	160 – 195mm	4 – 12mm



Fibre Cement Fixings.

Carbon Fixings to Timber



Product Code	Build Up
FCT130BAZ	45 - 65mm

Stainless Fixings to Timber



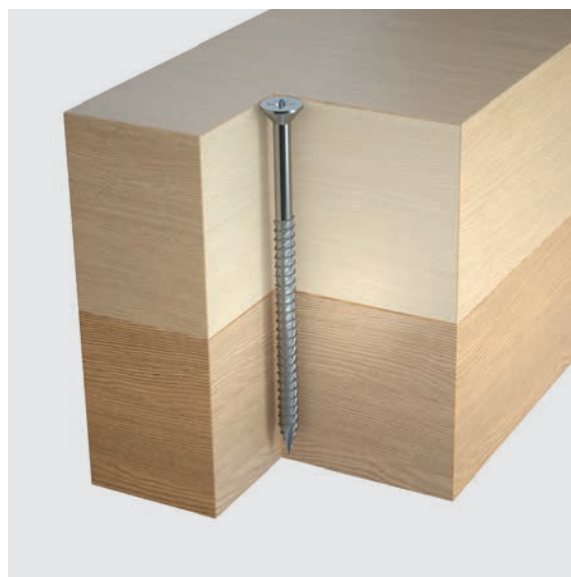
Product Code	Build Up
SSFCT130BAZ	45 - 65mm

A2/304 Grade stainless steel.



Stainless Countersunk Woodscrews.

Countersunk Woodscrews



Product Code	Dimensions
SSCSK4.0X20	4 × 20mm
SSCSK4.0X25	4 × 25mm
SSCSK4.0X30	4 × 30mm
SSCSK4.0X40	4 × 40mm
SSCSK5.0X50	5 × 50mm
SSCSK5.0X60	5 × 60mm
SSCSK5.0X70	5 × 70mm
SSCSK5.0X80	5 × 80mm
SSCSK6.0X80	6 × 80mm
SSCSK6.0X100	6 × 100mm
SSCSK6.0X120	6 × 120mm
SSCSK6.0X130	6 × 130mm
SSCSK6.0X140	6 × 140mm
SSCSK6.0X200	6 × 200mm

A2/304 Grade stainless steel.

Other sizes available please contact a member of the sales team.

Self-Tapping Fixings.

TSAB Stainless Steel Fixings are designed for securing cladding sheets to purlins, rails and timber sections. Requires a suitable pilot hole, also available in carbon steel.

Type 304 modified stainless is recommended in most corrosive environments. However it is not suitable for swimming pools or other high chlorine or chloride environments. Consult our technical department for further information.

AB – Point Self Tapper



Product Code	Size
TSAB25	6.3 × 25mm
TSAB30	6.3 × 30mm
TSAB40	6.3 × 40mm
TSAB50	6.3 × 50mm
TSAB65	6.3 × 65mm
TSAB75	6.3 × 75mm
TSAB90	6.3 × 90mm
TSAB100	6.3 × 100mm

Pilot Hole Guidance

Material Thickness	Pilot Hole Size
up to 1mm	No pilot required
1 – 2mm	4.9mm
2 – 3mm	5.1mm
3 – 5mm	5.3mm

The "A.B" thread provides high pull out values up to 5mm thick steel & timber (40mm penetration required).

Anything between 5 – 12mm thick the "B" thread should be used which are available on request, please consult our sales team.

TSAB fixings can be supplied with Colortite heads – Codes change to CTSAB.

Con-Fix.

Con-Fix are ideal for securing materials to concrete and brickwork. Con-Fix require a suitable pilot hole.

Con-Fix TH Head

Used for fixing steel and other substrates to masonry



Product Code	Size
TH432	6.3 × 32mm
TH445	6.3 × 45mm
TH457	6.3 × 57mm
TH470	6.3 × 70mm
TH482	6.3 × 82mm
TH4100	6.3 × 100mm
TH4125	6.3 × 125mm

Galvanised washers available in 16, 19 or 29mm.

Concrete Screw A4/316

Concrete screw with hexagon head and moulded washer A4/316 stainless steel



Product Code	Size
FBS8X70/5US	8 × 70mm
FBS8X80/15US	8 × 80mm
FBS8X90/25US	8 × 90mm
FBS10X90/5US	10 × 90mm
FBS10X100/15US	10 × 100mm
FBS10X120/35US	10 × 120mm
FBS12X130/30US	12 × 130mm

Stainless Concrete Fixing



Product Code	Size
SSTH445	6.3 × 45mm
SSTH475	6.3 × 75mm

Stainless washers available in 16, 19 or 29mm.
A2/304 Grade stainless steel.

Specifications

- Correct pilot hole size will vary depending on the substrate, please consult our sales team for advice.
- Accurate drilling of the substrate is of primary importance, users should check for themselves that the product is firmly embedded.
- Allow a minimum embedment of 40mm into sound concrete.
- Site tests should be carried out to obtain pull out figures for each application. The company offers site testing as part of its services.

Insulation Support.

Insulation Hangers

For use in securing insulation on side cladding



Product Code	Size
IH40	40mm
IH62	62mm
IH89	89mm
IH114	114mm
IH140	140mm
IH165	165mm
IH203	203mm
IH270	270mm

Insulation Fixing

To fix soft insulation materials in rear-ventilated facades



Product Code	Tube Length	Plate Diameter
DHK40	40mm	90mm
DHK60	60mm	90mm
DHK80	80mm	90mm
DHK100	100mm	90mm
DHK120	120mm	90mm
DHK140	140mm	90mm
DHK160	160mm	90mm
DHK180	180mm	90mm
DHK200	200mm	90mm
DHK220	220mm	90mm

To fix pressure-resistant insulation materials in rear-ventilated facades.

DHK45/40	40mm	45mm
DHK45/60	60mm	45mm
DHK45/80	80mm	45mm
DHK45/100	100mm	45mm

Chemical Fixings and Accessories.

Super Bond Mortar

Superbond mortar achieves a very high load level for safe use in cracked and non-cracked concrete



Product Code	Size
FISSB390S	390ml Cartridge + 2 x FISMR
FISSB585S	585ml Cartridge + 2 x FISMR
FISSBHIGHSPEED390S	390ml Cartridge + 2 x FISMR

The high speed mortar is also available for faster curing, when installing at extreme minus temperatures (from -20c)

Threaded Rods

Threaded rods available in zinc plated steel grades 5.8 or 8.8 and A4 stainless steel



Product Code	Size
FISAM10X150	M10 × 150mm
FISAM10X170	M10 × 170mm
FISAM10X200	M10 × 200mm
FISAM12X120	M12 × 120mm
FISAM12X140	M12 × 140mm
FISAM12X160	M12 × 160mm
FISAM12X180	M12 × 180mm
FISAM16X130	M16 × 130mm
FISAM16X175	M16 × 175mm
FISAM16X200	M16 × 200mm
FISAM16X250	M16 × 250mm
FISAM16X300	M16 × 300mm
FISAM20X245	M20 × 245mm
FISAM20X290	M20 × 290mm

Chemical Fixings and Accessories.

Static Mixer



Product Code	Size
FISMR	To suit 390ml cartridges (pack of 10)
FISUMR	To suit 585ml cartridges (pack of 10)

Dispenser



Product Code	Size
FISDMS	To suit cartridges up to 390ml
FISDMSL	To suit cartridges up to 585ml

Cleaning Brush



Product Code	Size
BS10	11mm dia. brush to suit 10mm dia. drill
BS12	13mm dia. brush to suit 12mm dia. drill
BS14	16mm dia. brush to suit 14mm dia. drill
BS16/18	20mm dia. brush to suit 16 or 18mm dia. drill
BS24	26mm dia. brush to suit 24mm dia. drill
BS28	30mm dia. brush to suit 28mm dia. drill
BS35	40mm dia. brush to suit 30, 32 or 35mm dia. drill

Anchor Bolts.

For highest demands. Powerful and flexible with better performance. Available in zinc plated steel & A4 stainless steel.



Product Code	Thread (Dia. x Length)	Overall Length
FAZII8/10	M8 x 38mm	75mm
FAZII8/30	M8 x 58mm	85mm
FAZII8/50	M8 x 78mm	105mm
FAZII10/10	M10 x 53mm	85mm
FAZII10/50	M10 x 93mm	125mm
FAZII12/10	M12 x 61mm	100mm
FAZII12/20	M12 x 71mm	110mm
FAZII12/30	M12 x 81mm	120mm
FAZII12/100	M12 x 151mm	190mm
FAZII16/100	M16 x 159mm	210mm

Approved for

- Concrete C20/25 to C50/60 cracked.
- Concrete C20/25 to C50/60 non-cracked.

Also suitable for

- Concrete C12/15
- Natural stone with dense structure.

Frame Fixings.

Specialist frame fixing with short drill hole depth. Available in zinc plated steel and A4 stainless steel.



Product Code	Length
SXR10X60FUS	60mm
SXR10X80FUS	80mm
SXR10X100FUS	100mm
SXR10X120FUS	120mm
SXR10X140FUS	140mm
SXR10X160FUS	160mm
SXR10X180FUS	180mm
SXR10X200FUS	200mm
SXR10X230FUS	230mm
SXR10X260FUS	260mm

All require 10mm pilot hole.

Hammer Fixings.

Hammer in plug with zinc plated steel nail for simple, fast and economical installation.

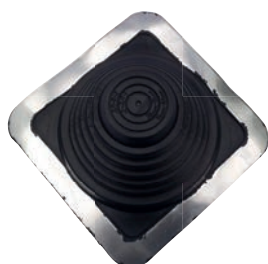


Product Code	Diameter	Anchor Length	Max. Fixture Thickness
N5X25/1F	5mm	25mm	1mm
N5X30/5F	5mm	30mm	5mm
N5X40/15F	5mm	40mm	15mm
N5X50/25F	5mm	50mm	25mm
N6X35/5F	6mm	35mm	5mm
N6X40/10F	6mm	40mm	10mm
N6X60/30F	6mm	60mm	30mm
N6X80/50F	6mm	80mm	50mm
N8X60/20F	8mm	60mm	20mm
N8X80/40F	8mm	80mm	40mm
N8X100/60F	8mm	100mm	60mm
N8X120/80F	8mm	120mm	80mm

Additional Products.

Flashtite: EPDM

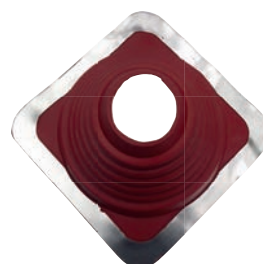
Provides a permanent seal that controls gaseous or liquid environments to eliminate leakage and odour contamination. Covers all applications from -55C to +135C



Product Code	Pipe size	Colour
CPMINI	3 – 19mm	Black
CP1	6 – 70mm	Black
CP2	22 – 101mm	Black
CP3	6 – 146mm	Black
CP4	70 – 177mm	Black
CP5	101 – 209mm	Black
CP6	121 – 254mm	Black
CP7	140 – 292mm	Black
CP8	171 – 343mm	Black
CP9	241 – 520mm	Black
CPMAXI	304 – 724mm	Black

Flashtite: Silicone

Provides a permanent seal that controls gaseous or liquid environments to eliminate leakage and odour contamination. For environmental extremes, from -74C to +260C

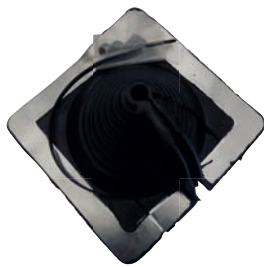


Product Code	Pipe size	Colour
HP1	6 – 70mm	Red
HP2	22 – 101mm	Red
HP3	6 – 146mm	Red
HP4	70 – 177mm	Red
HP5	101 – 209mm	Red
HP6	121 – 254mm	Red
HP7	140 – 292mm	Red
HP8	171 – 343mm	Red
HP9	241 – 520mm	Red
HPMAXI	304 – 724mm	Red

Additional Products.

Retro-fit : EPDM

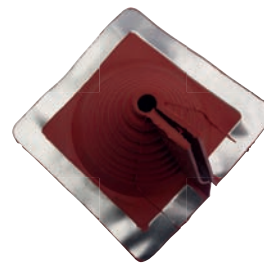
Designed to make a neat weather proof repair or for retrofitting to existing pipe work. Covers all applications from -55C to +135C



Product Code	Pipe size	Colour
RETROFITCOLD1	12.7 – 101.6mm	Black
RETROFITCOLD2	101.6 – 235mm	Black
RETROFITCOLD3	235 – 413mm	Black

Retro-fit : Silicone

Designed to make a neat weather proof repair or for retrofitting to existing pipe work. For environmental extremes, from -74C to +260C



Product Code	Pipe size	Colour
RETROFITHOT1	12.7 – 101.6mm	Red
RETROFITHOT2	101.6 – 235mm	Red
RETROFITHOT3	235 – 413mm	Red

Additional Products.

Hex Caps

Plastic caps for hex head screws



Product Code	Washer size	Colour
HC16	16mm	Various
HC19	19mm	Various
HC29	29mm	Various

Drive Bits

Drive bits for screwdrivers



Product Code	To Suit
5/16HALFENDRIVE	8mm hex head
5/16SOCKETW/CLIP (for stainless steel)	8mm hex head
TSOCKET	11mm Colortite Head
PH2	Phillips No.2
T25TORXBIT	Torx 25

Other sizes available.

Horse Shoe Packers

To perform packing, levelling, spacing and shimming



Product Code	Size	Colour
1MMPACKERYELLOW	1×55×43mm	Yellow
2MMPACKERGREEN	2×55×43mm	Green
3MMPACKERBLUE	3×55×43mm	Blue
4MMPACKERRED	4×55×43mm	Red
5MMPACKERBEIGE	5×55×43mm	Beige
6MMPACKERBLACK	6×55×43mm	Black
10MMPACKERGREY	10×55×43mm	Grey

Spacer Ferrules

Plastic spacer ferrules



Product Code	Size	Colour
FPS22	22mm	White
FPS25	25mm	White
FPS30	30mm	White
FPS35	35mm	White
FPS42	42mm	White

Colour Range and Options.

RAL 1000	Green Beige	RAL 4009	Pastel Violet	RAL 7000	Alaska Grey	RAL 9004	Signal White
RAL 1001	Beige	RAL 4010	Telemagenta	RAL 7001	Silver Grey	RAL 9005	Jet Black
RAL 1002	Sand Yellow	RAL 5000	Violet Blue	RAL 7002	Olive Grey	RAL 9006	Metallic Silver
RAL 1003	Signal Yellow	RAL 5001	Green Blue	RAL 7003	Moss Grey	RAL 9007	Grey Aluminium
RAL 1006	Maize Yellow	RAL 5002	Ultramarine Blue	RAL 7004	Signal Grey	RAL 9010	Pure White
RAL 1007	Daffodil Yellow	RAL 5003	Sapphire Blue	RAL 7005	Mouse Grey	RAL 9011	Graphite Black
RAL 1013	Oyster White	RAL 5004	Black Blue	RAL 7006	Beige Grey	RAL 9016	Traffic White
RAL 1014	Ivory	RAL 5005	Signal Blue	RAL 7008	Khaki Grey	RAL 9017	Traffic Black
RAL 1015	Light Ivory	RAL 5007	Brilliant Blue	RAL 7009	Green Grey	RAL 9018	Papyrus White
RAL 1016	Sulphur Yellow	RAL 5008	Grey Blue	RAL 7010	Tarpaulin Grey	RAL 9022	Peal Light Grey
RAL 1018	Zinc Yellow	RAL 5009	Azure Blue	RAL 7011	Iron Grey	RAL 9023	Pearl Dark Grey
RAL 1019	Grey Beige	RAL 5010	Gentian Blue	RAL 7012	Slate Grey	BS 00E53	Black
RAL 1021	Rape Yellow	RAL 5011	Steel Blue	RAL 7013	Brown Grey	BS 00E55	White
RAL 1023	Traffic Yellow	RAL 5012	Light Blue	RAL 7015	Slate Grey	BS 04C39	Terracotta
RAL 1024	Ochre Yellow	RAL 5013	Cobalt Blue	RAL 7016	Anthracite Grey	BS 04E53	Poppy Red
RAL 1028	Melon Yellow	RAL 5014	Pigeon Blue	RAL 7021	Black Grey	BS 08B29	Vandyke Brown
RAL 1032	Broom Yellow	RAL 5015	Sky Blue	RAL 7023	Concrete Grey Graphite	BS 10A05	Goosewing Grey
RAL 1035	Pearl Beige	RAL 5017	Traffic Blue	RAL 7024	Grey	BS 10B19	Mushroom
RAL 1036	Pearl Gold	RAL 5018	Turquoise Blue	RAL 7030	Stone Grey	BS 10C31	Honesty
RAL 1037	Sun Yellow	RAL 5019	Capri Blue	RAL 7031	Blue Grey	BS 12B17	Meadowland
RAL 2000	Yellow Orange	RAL 5021	Water Blue	RAL 7032	Pebble Grey	BS 12B21	Moorland Green
RAL 2001	Red Orange	RAL 5022	Night Blue	RAL 7033	Cement Grey	BS 12B27	Olive Green
RAL 2002	Vermilion	RAL 5023	Distant Blue	RAL 7034	Yellow Grey	BS 12B29	Juniper Green
RAL 2003	Pastel Orange	RAL 5024	Pastel Blue	RAL 7035	Oyster	BS 12E53	Linden Green
RAL 2004	Pure Orange	RAL 6000	Patina Green	RAL 7036	Platinum Grey	BS 14C37	Jade
RAL 2008	Bright Red Orange	RAL 6001	Emerald Green	RAL 7037	Dusty Grey	BS 14C39	Pinewood Green
RAL 2009	Traffic Orange	RAL 6002	Heritage Green	RAL 7039	Quartz Grey	BS 14E53	Veronia Green
RAL 2011	Deep Orange	RAL 6003	Olive Green	RAL 7040	Window Grey	BS 16C37	Reef Garden
RAL 2013	Pearl Orange	RAL 6004	Blue Green	RAL 7042	Traffic Grey A	BS 18B17	Albatross
RAL 3000	Flame Red	RAL 6005	Moss Green	RAL 7043	Traffic Grey B	BS 18B25	Merlin Grey
RAL 3002	Carmine Red	RAL 6006	Grey Olive	RAL 7044	Silk Grey	BS 18B29	Slate Blue
RAL 3003	Ruby Red	RAL 6007	Bottle Green	RAL 7045	Telegrey 1	BS 18C35	Turquoise
RAL 3004	Purple Red	RAL 6009	Fir Green	RAL 7047	Telegrey 4	BS 18C37	Wedgwood Blue
RAL 3005	Wine Red	RAL 6011	Reseda Green	RAL 7048	Pearl Mouse Grey	BS 18C39	Ocean Blue
RAL 3007	Black Red	RAL 6012	Black Green	RAL 8001	Ochre Brown	BS 18E50	Light Blue
RAL 3009	Oxide Red	RAL 6013	Reed Green	RAL 8002	Signal Brown	BS 18E53	Solent Blue
RAL 3011	Brown Red	RAL 6016	Turquoise Green	RAL 8003	Clay Brown	BS 18E58	Britannia
RAL 3012	Beige Red	RAL 6017	May Green	RAL 8004	Copper Brown	BS 20E51	Cornflower Blue
RAL 3013	Tomato Red	RAL 6018	Yellow Green	RAL 8007	Fawn Brown		
RAL 3014	Antique Pink	RAL 6019	Pastel Green	RAL 8012	Red Brown		
RAL 3016	Coral Red	RAL 6021	Pale Green	RAL 8014	Sepia Brown		
RAL 3020	Traffic Red	RAL 6022	Olive Drab	RAL 8015	Chestnut Brown		
RAL 3027	Raspberry Red	RAL 6024	Traffic Green	RAL 8016	Mahogany Brown		
RAL 4001	Red Lilac	RAL 6025	Fern Green	RAL 8017	Chocolate Brown		
RAL 4003	Heather Violet	RAL 6027	Light Green	RAL 8019	Grey Brown		
RAL 4004	Claret Violet	RAL 6028	Pine Green	RAL 8022	Black Brown		
RAL 4005	Blue Lilac	RAL 6029	Mint Green	RAL 8023	Orange Brown		
RAL 4006	Traffic Purple	RAL 6032	Signal Green	RAL 8024	Beige Brown		
RAL 4007	Purple Violet	RAL 6033	Mint Turquoise	RAL 9001	Cream		
RAL 4008	Signal Violet	RAL 6034	Pastel Turquoise	RAL 9002	Grey White		

Colortite

Our Colortite and painted products appear before the rest of the products codes with either BS or RAL. Colortite offers greatly improved corrosion resistance, the Colortite head is factory applied for a tough and durable finish.

Powdertite Products

We have a range of fixings available that are powder coated. Low profile products can be supplied with a powder coated head to match most common sheet finishes. Please consult a member of our sales team for more information.

Powder Coated Hex Head Fixings (New to Fixing Point)

Some sizes/colours may incur a surcharge. Please consult a member of our sales team for more information.

Quality and Reliability.

Fixing Point is an active member of the Metal Cladding and Roofing Manufacturers Association (MCRMA). MCRMA promotes best practice within the industry and has a wealth of technical and regulatory data that is accessible to members and end users via the MCRMA website.

The Company is certified to operate a **BS EN ISO 9001:2015** Quality Assurance scheme to ensure that every item sold meets our high product performance specifications.

Manufacturing facilities include nylon injection moulding plant, product assembly, roll forming of spacer grid bars, powder coating and paint spraying.

Our long established quality control laboratory at our head office tests products for their corrosion resistance, drilling ability, mechanical strength and dimensional accuracy to ensure that our Quality Assurance standards are maintained.

We enjoy long standing partnering arrangements with our key suppliers to maintain consistency and reliability; we do not readily switch sources of supply.

Fixing Point has a policy of continuous improvement and reserves the right to withdraw or replace items from time to time without notice.

© May 2018
Issue No.

