

TECHNICAL DATA SHEET

**Fixing
Point.**

FP SSCSKCP & SSCSK12CP



Description:

Ø5.5 x Lmm, Self-drilling, Bi-metal stainless steel,
Countersunk Light Section & Heavy Section

Fastener Material:

Austenitic Stainless Steel A2 (304 Grade)

Drill Point:

Hardened Carbon Steel

Drilling Capacity:

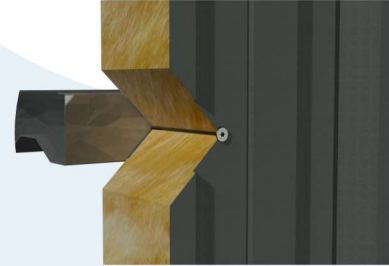
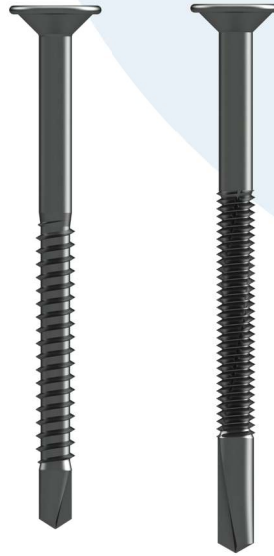
SSCKSCP = 1.2mm – 3.0mm
SSCSK12CP = 4.0mm – 12.0mm

Head Styles & Drive:

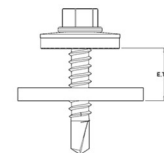
SSCSKCP Wafer Countersunk Torx T25 Drive

Application(s):

Composite Panel to light section rail
Composite panel to heavy section rail



| Code | Length | Minimum (Panel) | Maximum Incl. Purlin |
|--------------|--------|-----------------|----------------------|
| SSCSKCP075 | 75mm | - | 50mm |
| SSCSKCP125 | 125mm | 50mm | 100mm |
| SSCSKCP150 | 150mm | 80mm | 125mm |
| SSCSKCP180 | 180mm | 100mm | 155mm |
| SSCSKCP200 | 200mm | 120mm | 175mm |
| SSCSK12CP100 | 100mm | - | 60mm |
| SSCSK12CP120 | 120mm | 60mm | 80mm |
| SSCSK12CP150 | 150mm | 70mm | 100mm |
| SSCSK12CP200 | 200mm | 120mm | 160mm |



Maximum dimension includes the maximum substrate thickness and ensures that only stainless threads are engaged.

Code Explanation

SS CSK CP 125

SS = FP Stainless Steel Fastener
CSK = Countersunk Light Section
CP = Composite Panel
125 = Fastener Length

SS CSK 12 CP 150

SS = FP Stainless Steel Fastener
CSK = Countersunk
12 = Heavy Section
CP = Composite Panel
150 = Fastener Length

T +44 (0) 1242 265100 E info@fixingpoint.com fixingpoint.com

Reg No: 02050516 • Reg Co address: 183 - 205 Westgate Street, Gloucester, England, GL1 2RN

Everything on point

TECHNICAL DATA SHEET



FP SSCSKCP & SSCSK12CP

Durability:


These products may be used for indoor and outdoor applications with corrosion category class of C1, C2 or C3 in accordance with Table B1 and Table B2 in EN 1993-1-3 and EN ISO 12944-2. Subject to approval by Fixing Point, they may also be used in applications with a corrosion category class C4 or C5 in accordance with these Tables.

Warranties up to 25-years on these products are available with prior project approval from Fixing Point.

Note: These products are not considered suitable for use in swimming pool buildings where they may be exposed to a chlorine-rich environment and the risk of condensation – consult Fixing Point

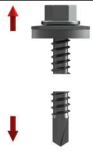
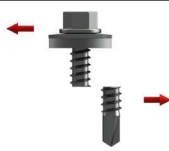
Technical Data:

Pull Out

|  | SSCSKCP | | | | | | | SSCSK12CP | |
|---|--------------------|--------|--------|-------|--------|-------|-------|-----------|--------|
| | Material Thickness | 1.2mm | 1.5mm | 1.8mm | 2.0mm | 2.5mm | 3.0mm | 4.0mm | 6.0mm |
| | Grade | S450 | | | | | | | S275JR |
| Pull Out (kN) | 1.460 | 2.578* | 3.695* | 4.44 | 5.590* | 6.74 | 5.836 | 8.795 | |

Pull Through

| | | |
|--|-------------------|-------------------|
|  | Head Style | Wafer Countersunk |
| | Substrate | Composite Panel |
| | Pull Through (kN) | 1.920 |

| | | | |
|---|-----------------------|--|---------------------|
|  | Ultimate Tensile (kN) |  | Ultimate Shear (kN) |
| | 10.107 | | 7.79 |

All values shown are Characteristic value (NRk & VRk). The values have been derived from methodology as defined in the European Assessment Document (EAD) 33046-01-062 or calculated according to the procedures in BS EN 1993-1-3:2024. To determine the Design Value (NRd & VRd) the material safety factor of 1.33 must be applied to the Characteristic Values – unless a greater safety factor is specified.

Values marked * are interpolated.

Installation Guidelines:

Self-drilling fasteners should always be installed with a dedicated variable speed screwgun, fitted with an appropriately adjusted depth locating nosepiece. This will ensure that the correct compression of the washer is achieved.

Under no circumstances should impact drivers be used to install self-drilling fasteners they are detrimental to the mechanical performance of the fastener.

Based upon industry standards the following washer diameters should be used for the following applications:

Roof Primary / Main-fix = 19mm
 Rooflight Primary / Main-fix = 29mm
 Wall Primary / Main-fix = 16mm
 Roof, Rooflight & Wall Secondary / Stitcher = 16mm



As well as choosing the appropriate washer diameter, the EPDM thickness and shore hardness is equally as important. It is recommended that for composite panels a minimum 3.0mm EPDM with a Shore hardness of between 40-60 and for built-up systems a minimum EPDM thickness of 2.0mm and Shore hardness of 60-80.