

FixingPoint.

**Product
Guide.**



Roofing and Cladding Fixings

Contents.

Find what you need quickly...

Introduction	03
Drilltite Carbon Steel Single/Double Skin Fixings	05
Drilltite Carbon Steel Composite Panel Fixings	06
Carbon Self Drilling Screws for Timber Purlins	07
Stitchers	08
Specialist Stitchers	09
Drilltite Stainless Steel Single/Double Skin Fixings	11
Drilltite Stainless Steel Composite Panel Fixings	12
Other Specialist Stainless Fixings	13
Colortite Moulded Nylon Heads Carbon Steel	15
Colortite SD Stainless Steel	18
Steel Frame Clip Fix	20
Low Profile Fixings Carbon Steel	21
Low Profile Fixings Stainless Steel	23
Rivets	24
Timber to Steel Carbon Fixings	26
Timber to Stainless Steel Fixings	27
Fibre Cement Fixings	28
Stainless Countersunk Woodscrews	30
Self-Tapping Fixings	31
Con-Fix	32
Insulation Support	33
Chemical Fixings and Accessories	34
Anchor Bolts	36
Frame Fixings/Hammer Fixings	37
Additional Products	38
Colour Range and Options	41
Quality and Reliability	42



Roofing & Cladding Fixings.

Here you'll find an extensive range of self drilling fixings together with associated rivets and sundries for use with most of the popular metal roofing and cladding systems to be found in the UK.

Products are set out by application; fixings for single skin, double skin, composite panel, standing seam, timber, fibre cement and roof lights are laid out in a clear and easily understood format.

We have deliberately limited the technical content; if you seek in-depth written material including COSHH, maintenance and performance data sheets, you can download them direct from the technical section of our website at fixingpoint.com, or contact our technical department.

Our self drilling fixings are manufactured from two materials, carbon steel and austenitic stainless steel.

Carbon steel products are used for most mainstream applications, offering good drilling performance, reliable pull out resistance and, thanks to our high level of corrosion protection, a long service life. Carbon steel products are our most economical fixing format.

Stainless steel products enjoy an extended life expectancy since the austenitic material has exceptional corrosion resistance. However austenitic stainless steel cannot form a drill tip that will drill mild steel, and so a non-stainless steel tip is added to the stainless steel fixing body. 304 Grade stainless steel is not recommended for coastal or extreme corrosive environments.

This format is the familiar 'bi-metal' self drilling fixing that is used extensively where durability and compatibility with other metals are required. In particular, these fixings are used for fixing aluminium roofing systems where galvanic reactions can cause rapid corrosion of mismatched components.

Both our stainless and carbon steel fixing ranges are available with a 'Colortite' precision-moulded coloured nylon head, which provides washer protection, extended head durability and the opportunity to blend in the fixing colour with the weather sheet.

Colortite products are insert moulded onto our standard Drilltite stock; this exceptionally reliable process gives great strength and precision and a long term, maintenance-free finish. Colortite moulded heads can be supplied with 16mm, 19mm or 29mm diameter sealing washers to suit the application.

We've also included our latest Drilltite 'LP' low profile range for the ultimate in discrete unobtrusive fastening. LP products can be supplied with a powder coated head to match most common sheet finishes. Our self drilling fixings are supplied in two ranges based on their drilling and tapping ability.

Light section fixings work in thinner, cold rolled steels ranging from 1.2mm up to 4mm. Generally, light section fixings have a short drill tip and a coarse, 'wood screw' type thread, to tap and grip thin sheet materials. Typical applications are for fixing outer weather sheets to our Gridtite spacer bar or for fixing liner sheets to sheeting rails.

Heavy section fixings have a longer drill tip and finer threads; they take over from light section fixings at 4mm and will cope with hot rolled steel up to 12mm. Use heavy section fixings for attaching sheets or Gridtite brackets to structural steelwork.

Alongside the light and heavy section fixings, we have a whole range of products for other, allied, applications. For example fixing steel to timber, or timber to steel; repair stitchers, side lap fixings, roof light fixings, rivets, sleeve fixings, masonry self tappers and many others. Because our range is constantly changing, some items may not appear in this publication; contact Fixing Point for the latest developments.

What do the codes mean?

Our codes reflect the size, type and performance of the product. The first two or three letters describe the product type, the next number placed adjoining the first letters describes the drilling and tapping range, so 2 = 2mm, 3 = 3mm and so on. (Not all codes have this range number)

Fixing Codes

DT: Drilltite Fixing

CT: Colortite Nylon Head

LP: Low Profile

LS: Stitcher

SD: Stainless Drilltite

TFD & TD: Timber to Steel Fixing

DST: Steel to Timber Fixing

TH & TF: Masonry Fixing

FC: Fibre Cement

TSAB: Stainless Steel Self Tapping

HT: High Thread Composite Panel Fixing

For example:

DTHT is a light section high thread composite panel fixing.

DT12HT is a heavy section high thread composite panel fixing.

Fixing Diameters

Fixing Diameters are equivalent to: 4.8, 5.5, 6.3, or 7.8. HT high threads are always the same body size so we don't list their diameters, and for convenience we sometimes omit fixing diameters from other sizes too.

Then a two or three digit number which is the fixing length (not the effective thread length).

If a washer is required it will appear after the length as G16, G19, G29 (16, 19 & 29mm diameter galvanised) or S16, S19 or S29 for stainless steel versions.

Colour Codes

Colour codes for Colortite and painted products appear before the rest of the product code; for BS colours this might be 10A05 or 12B27 etc, for RAL colours RAL 9006 etc. Users should specify the colour when ordering, using the correct code to ensure correct matching.

Some codes feature several of the above linked together, for example 10A05 CTHT 125 G16 is a Goosewing Grey, Colortite head, carbon steel, light section, high thread, 125mm long with a 16mm dia. galvanised washer.

Drilltite Carbon Steel Single/Double Skin Fixings.

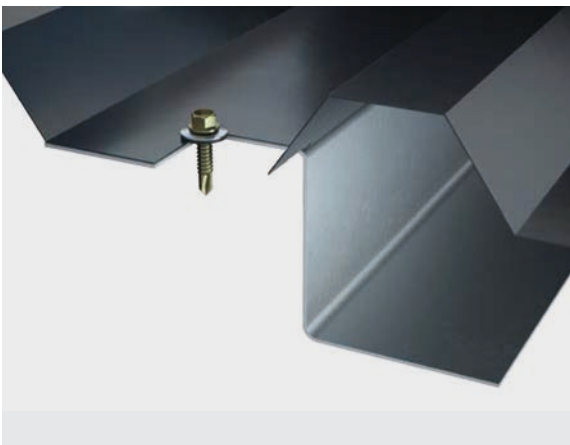
Light Section Fixings

Drill and fix into cold rolled steel



Product Code	*ETL	Drilling Capacity
DT220	7mm	1.2 to 3mm
DT325	12mm	1.2 to 3mm
DT435	22mm	1.2 to 4mm
DT443	30mm	1.2 to 4mm
DT450	37mm	1.2 to 4mm
DT457	44mm	1.2 to 4mm
DT470	57mm	1.2 to 4mm

Galvanised or stainless steel washers available in 16, 19 or 29mm.



Heavy Section Fixings

Drill and fix into hot rolled steel



Product Code	*ETL	Drilling Capacity
DT1022	7mm	4 to 8mm
DT1232	10mm	4 to 12mm
DT1240	18mm	4 to 12mm
DT1260	38mm	4 to 12mm
DT1280	58mm	4 to 12mm

Galvanised or stainless steel washers available in 16, 19 or 29mm.



*ETL is the Effective Thread Length – the usable portion of the Fixing.

Drilltite Carbon Steel Composite Panel Fixings.

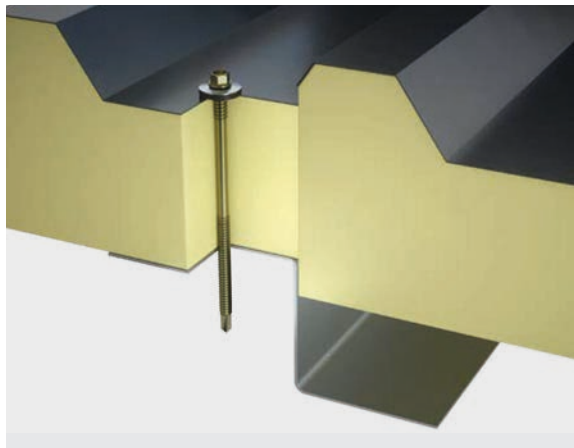
Light Section Fixings

Drill and fix into cold rolled steel



Product Code	Suits Panel Thickness	Drilling Capacity
DTHT65	30 – 40mm	1.2 to 4mm
DTHT80	40 – 55mm	1.2 to 4mm
DTHT100	45 – 75mm	1.2 to 4mm
DTHT125	70 – 100mm	1.2 to 4mm
DTHT150	90 – 125mm	1.2 to 4mm
DTHT175	115 – 150mm	1.2 to 4mm
DTHT200	140 – 175mm	1.2 to 4mm
DTHT225	165 – 200mm	1.2 to 4mm
DTHT250	175 – 225mm	1.2 to 4mm

Galvanised or Stainless washers available in 16, 19 or 29mm.



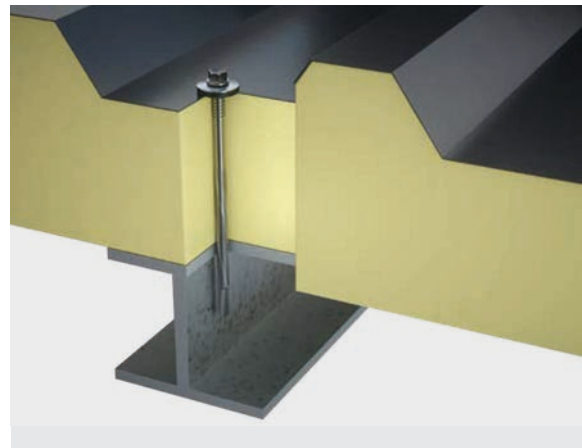
Heavy Section Fixings

Drill and fix into hot rolled steel



Product Code	Suits Panel Thickness	Drilling Capacity
DT12HT85	25 – 50mm	4 to 12mm
DT12HT105	35 – 70mm	4 to 12mm
DT12HT120	50 – 85mm	4 to 12mm
DT12HT150	80 – 115mm	4 to 12mm
DT12HT185	110 – 150mm	4 to 12mm
DT12HT240	150 – 205mm	4 to 12mm

Galvanised or Stainless washers available in 16, 19 or 29mm.



Carbon Self Drilling Screws for Timber Purlins.

Steel to Timber Gash Point

Max steel thickness is 2 × 0.9mm



Product Code	Size
DST25	6.3 × 25mm
DST32	6.3 × 32mm
DST45	6.3 × 45mm

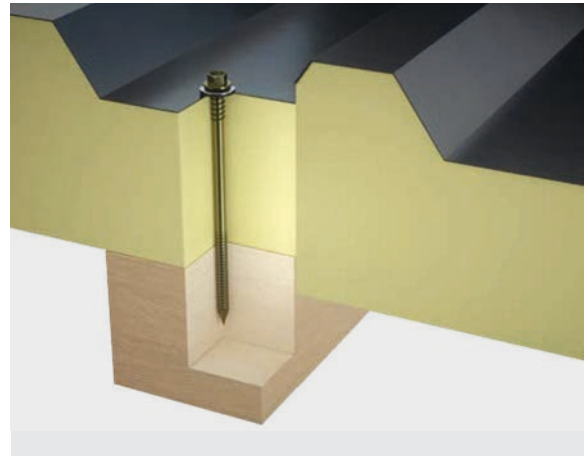
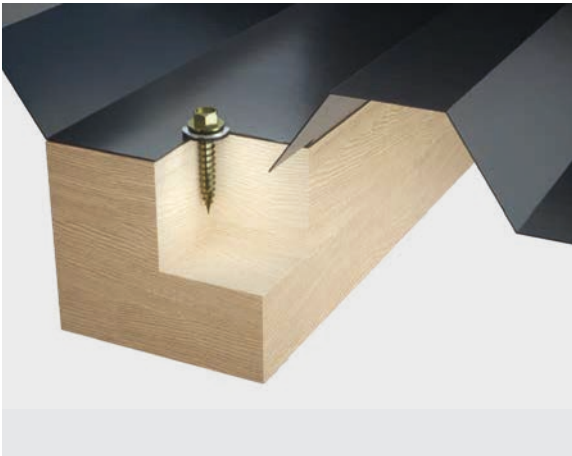
Galvanised or stainless washers available in 16, 19 or 29mm.

Composite Panel to Timber Gash Point



Product Code	Suits Panel Thickness
DSTHT60	20 – 25mm
DSTHT80	20 – 40mm
DSTHT100	40 – 60mm
DSTHT120	60 – 80mm
DSTHT160	80 – 120mm
DSTHT200	110 – 160mm

Galvanised or stainless washers available in 16, 19 or 29mm.



Stitchers.

Carbon Stitchers

For Side Laps



Product Code	Size	Type
LS220	4.8 × 20mm	Mini Stitcher
LS2225	6.3 × 25mm	Standard Stitcher
MLS225	7.8 × 25mm	Mega Stitcher (Repair)

Galvanised or stainless washers available in 16, 19 or 29mm.

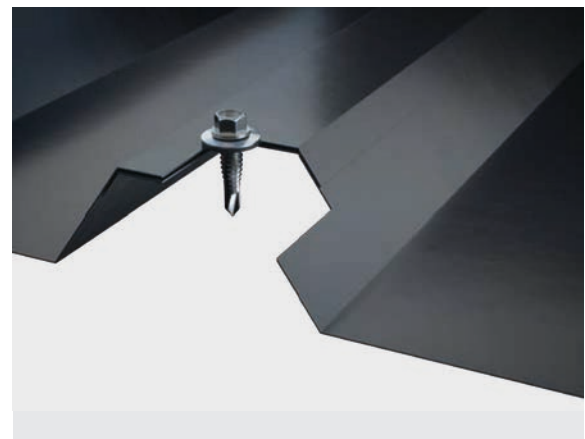
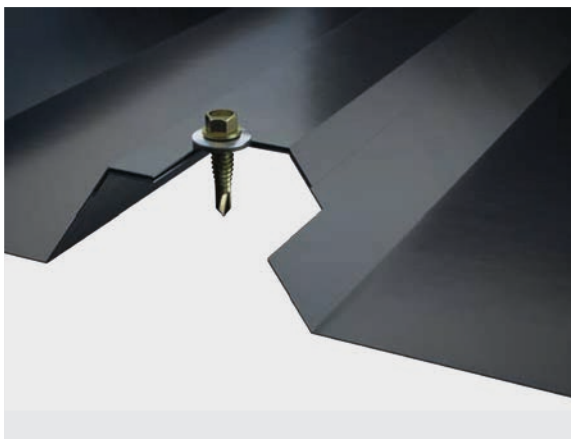
Stainless Stitchers

For Side Laps



Product Code	Size	Type
SLS225	6.3 × 25mm	Standard Stitcher
SMLS233	7.5 × 33mm	Mega Stitcher

Stainless washers available in 16, 19 or 29mm.



Specialist Stitchers.

Laplox

Requires 10mm pilot hole



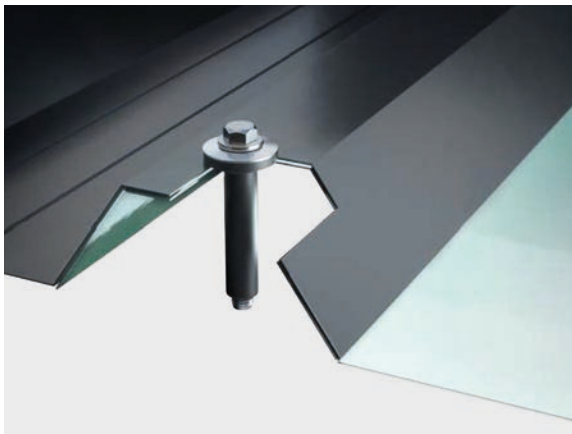
Product Code

LAPLOX25

LAPLOX38

Comes with S19 washer. Colorite version available.

LAPLOX is designed to give a trouble-free solution to the problem of securing side laps on Translucent Sheets. The stainless steel fixing and washer with an E.P.D.M. sleeve, gives a corrosion-free fastener that is resistant to U.V. and pollutants.



Lapfix

Requires 10mm pilot hole



Product Code

LAPFIX

Ideal for side laps on Fibre Cement Sheets. Carbon steel fixing, E.P.D.M. sleeve, sealing washer cap.



Specialist Stitchers.

FAB-LOK Compression Fixings

Requires 9mm pilot hole



Product Code	Screw Material	Rivet/Sleeve Material	Gripe Range	Penetration Length
FAB 10 - 4	304 Stainless Steel	5052-H32 ALUMINUM	1.6mm - 6.35mm	35mm

Grip range is total material thickness Fab-Lok will fasten.

Fab-Lok Compression Fixings for Metal Cladding and Non-Metallic Sheets.

Fab-Lok compression fixings are universal with virtually unlimited uses. They may be used as structural fixings to secure lighter metals to heavier steel framing. Fab-Lok fixings are excellent side lap fixings. In areas of high or unusual wind conditions. Severe vibration or structural racking. High rate of expansion and contraction.



Drilltite Stainless Steel Single/Double Skin Fixings.

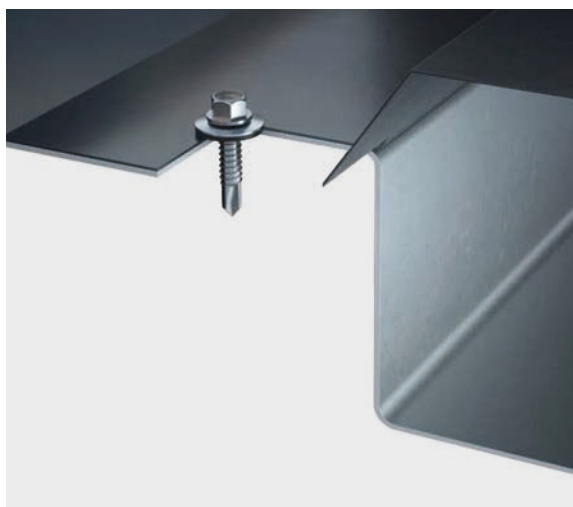
Light Section Fixings

Drill and fix into cold rolled sections



Product Code	*ESL	Drilling Capacity
SD325	9mm	1.2 to 3mm
SD435	18mm	1.2 to 4mm
SD450	33mm	1.2 to 4mm
SD465	48mm	1.2 to 4mm

Stainless washers available in 16, 19 or 29mm.



Heavy Section Fixings

Drill and fix into hot rolled sections



Product Code	*ESL	Drilling Capacity
SD1240	13mm	4 to 12mm
SD1260	33mm	4 to 12mm
SD1280	53mm	4 to 12mm

Stainless washers available in 16, 19 or 29mm.



*ESL = Effective Stainless Length.

Drilltite Stainless Steel Composite Panel Fixings.

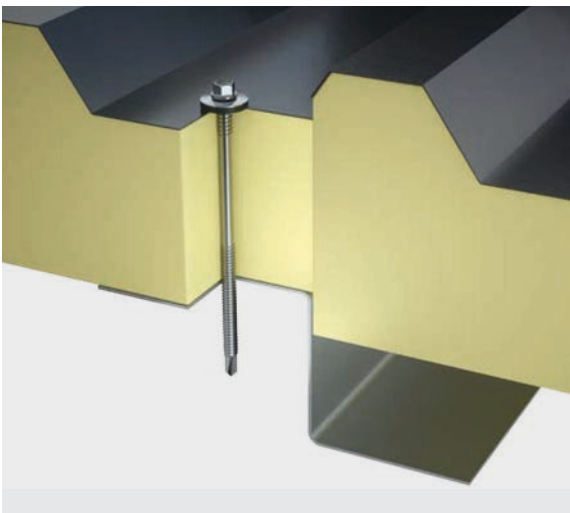
Light Section Fixings

Drill and fix into cold rolled sections



Product Code	Suits Panel Thickness	Drilling Capacity
SDHT65	25 – 40mm	1.2 to 4mm
SDHT80	40 – 55mm	1.2 to 4mm
SDHT110	45 – 85mm	1.2 to 4mm
SDHT125	60 – 100mm	1.2 to 4mm
SDHT150	85 – 125mm	1.2 to 4mm
SDHT180	115 – 155mm	1.2 to 4mm
SDHT200	135 – 175mm	1.2 to 4mm
SDHT230	165 – 205mm	1.2 to 4mm
SDHT250	185 – 225mm	1.2 to 4mm

Stainless washers available in 16, 19 or 29mm.



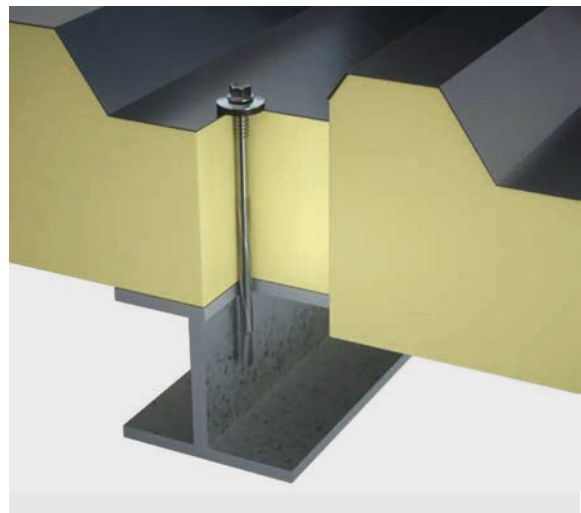
Heavy Section Fixings

Drill and fix into hot rolled sections



Product Code	Suits Panel Thickness	Drilling Capacity
SD12HT75	25 – 35mm	4 to 12mm
SD12HT85	30 – 45mm	4 to 12mm
SD12HT100	30 – 60mm	4 to 12mm
SD12HT125	50 – 85mm	4 to 12mm
SD12HT150	85 – 110mm	4 to 12mm
SD12HT195	120 – 155mm	4 to 12mm
SD12HT225	150 – 185mm	4 to 12mm
SD12HT250	175 – 210mm	4 to 12mm

Stainless washers available in 16, 19 or 29mm.



Other Specialist Stainless Fixings.

Stainless Halter Bracket Fixings



Product Code	Drilling Capacity	Size
DXH37	0.7 – 1.6mm	6.3 × 37mm
DXH237	1.2 – 3.0mm	6.3 × 37mm
DXH47	1.2 – 3.0mm	6.3 × 47mm

Stainless washers available in 16, 19 or 29mm.



Halter design courtesy of BEMO

Stainless Sheet to Timber Gash Point

Max steel thickness is 2 × 0.9mm



Product Code	Size
SDST50	6.5 × 50mm
SDST75	6.5 × 75mm

Stainless washers available in 16, 19 or 29mm.



Other Specialist Stainless Fixings.

Stainless Countersunk Composite Panel Fixings

Light Section Fixings



Product Code	Suits Panel Thickness	Drilling Capacity
SSCSKCP75	Up to 50mm	1.2 – 3mm
SSCSKCP125	50 – 100mm	1.2 – 3mm
SSCSKCP150	80 – 125mm	1.2 – 3mm
SSCSKCP180	100 – 155mm	1.2 – 3mm
SSCSKCP200	120 – 175mm	1.2 – 3mm

Heavy Section Fixings

Product Code	Suits Panel Thickness	Drilling Capacity
SSCSK12CP100	Up to 60mm	4 – 12mm
SSCSK12CP120	60 – 80mm	4 – 12mm
SSCSK12CP150	70 – 100mm	4 – 12mm
SSCSK12CP200	120 – 160mm	4 – 12mm

Stainless Annular Ring Shank Nails

High Pull Out Into Timber



Product Code	Size
SSANNULAR2.65X30	2.65 × 30mm
SSANNULAR2.65X40	2.65 × 40mm
SSANNULAR2.65X50	2.65 × 50mm
SSANNULAR3.35X50	3.35 × 50mm
SSANNULAR3.35X65	3.35 × 65mm
SSANNULAR3.75X75	3.75 × 75mm

Please note these are sold by weight and only in boxes of 5kg.

Colortite Moulded Nylon Heads Carbon Steel.

Colortite Moulded Nylon Heads can be added to most Drilltite fixings up to 250mm long. Colours match most common sheet finishes. Offering greatly improved corrosion resistance, the Colortite head is factory applied for a tough and durable finish. When ordering, provide B.S or R.A.L colour code, then fixing code. **Example 10A05CTS25G16.**

For Single/Double Skin

Light Section Fixings



Product Code	Drilling Capacity	ETL
CT325	1.2 - 3mm	12mm
CT435	1.2 - 4mm	22mm
CT443	1.2 - 4mm	30mm
CT450	1.2 - 4mm	37mm
CT457	1.2 - 4mm	44mm
CT470	1.2 - 4mm	57mm

Galvanised or stainless washers available in 16, 19 or 29mm.

For Composite Panels

Light Section Fixings



Product Code	Suits Panel Thickness	Drilling Capacity
CTHT65	30 - 40mm	1.2 to 4mm
CTHT80	40 - 55mm	1.2 to 4mm
CTHT100	45 - 75mm	1.2 to 4mm
CTHT125	70 - 100mm	1.2 to 4mm
CTHT150	90 - 125mm	1.2 to 4mm
CTHT175	115 - 150mm	1.2 to 4mm
CTHT200	140 - 175mm	1.2 to 4mm
CTHT225	165 - 200mm	1.2 to 4mm
CTHT250	175 - 225mm	1.2 to 4mm

Galvanised or stainless washers available in 16, 19 or 29mm.

Colortite Moulded Nylon Heads Carbon Steel.

Colortite Moulded Nylon Heads can be added to most Drilltite fixings up to 250mm long. Colours match most common sheet finishes. Offering greatly improved corrosion resistance, the Colortite head is factory applied for a tough and durable finish. When ordering, provide B.S or R.A.L colour code, then fixing code. **Example 10A05CTS25G16.**

For Single/Double Skin

Heavy Section Fixings



Product Code	Drilling Capacity	ETL
CT1235	4 - 12mm	10mm
CT1240	4 - 12mm	18mm
CT1260	4 - 12mm	38mm
CT1280	4 - 12mm	58mm

Galvanised or stainless washers available in 16, 19 or 29mm.

For Composite Panels

Heavy Section Fixings



Product Code	Suits Panel Thickness	Drilling Capacity
CT12HT85	25 - 50mm	4 to 12mm
CT12HT105	35 - 70mm	4 to 12mm
CT12HT120	50 - 85mm	4 to 12mm
CT12HT150	80 - 115mm	4 to 12mm
CT12HT185	110 - 150mm	4 to 12mm
CT12HT240	150 - 205mm	4 to 12mm

Galvanised or stainless washers available in 16, 19 or 29mm.

Colortite Moulded Nylon Heads Carbon Steel.

Carbon Stitchers

For Side Laps



Product Code	Type	Size
CTS25	Standard Stitcher	6.3 × 25mm
MCTS25	Repair Stitcher	7.8 × 25mm

Galvanised or stainless washers available in 16, 19 or 29mm.

Composite Panel to Timber Gash Point



Product Code	Suits Panel Thickness
CTTHT60	20 – 25mm
CTTHT80	20 – 40mm
CTTHT100	40 – 60mm
CTTHT120	60 – 80mm
CTTHT160	80 – 120mm
CTTHT200	110 – 160mm

Galvanised or stainless washers available in 16, 19 or 29mm.

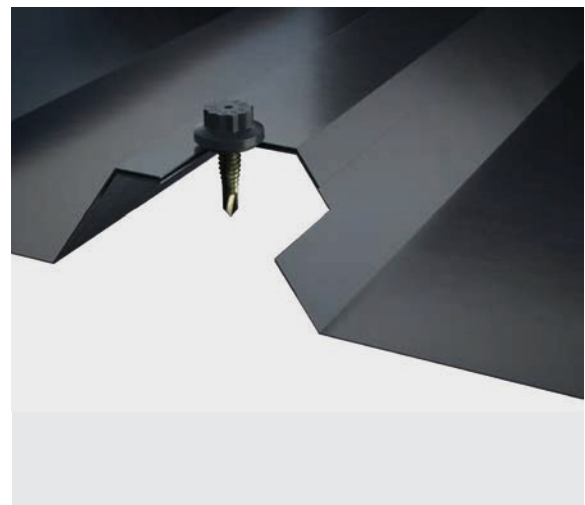
Steel to Timber Gash Point

Max steel thickness is 2 × 0.9mm



Product Code	Size
CTT25	6.3 × 25mm
CTT32	6.3 × 32mm
CTT45	6.3 × 45mm

Galvanised or stainless washers available in 16, 19 or 29mm.



Colortite SD Stainless Steel.

The integration of the durable Drilltite SD Stainless steel fixing with the Colortite Nylon Moulded head produces a fixing with exceptional resistance to weathering and corrosion. The high quality Colortite finish is available in a wide range of colours to match or contrast with sheeting and cladding systems, enabling designers to take full advantage of the tough stainless steel element whilst retaining lasting colour appeal.

Stainless washers available in 16, 19 or 29mm.

For Single/Double Skin

Light Section Fixings



Product Code	Drilling Capacity
SCT325	1.2 – 3mm
SCT435	1.2 – 4mm
SCT450	1.2 – 4mm
SCT465	1.2 – 4mm

For Single/ Double Skin

Heavy Section Fixings



Product Code	Drilling Capacity
SCT1240	4 – 12mm
SCT1260	4 – 12mm

For Composite Panels

Light Section Fixings



Product Code	Suits Panel Thickness	Drilling Capacity
SCTHT65	25 – 40mm	1.2 to 4mm
SCTHT80	40 – 55mm	1.2 to 4mm
SCTHT110	45 – 85mm	1.2 to 4mm
SCTHT125	60 – 100mm	1.2 to 4mm
SCTHT150	85 – 125mm	1.2 to 4mm
SCTHT180	115 – 155mm	1.2 to 4mm
SCTHT200	135 – 175mm	1.2 to 4mm
SCTHT230	165 – 205mm	1.2 to 4mm
SCTHT250	185 – 225mm	1.2 to 4mm

Product Code	Suits Panel Thickness	Drilling Capacity
SCT12HT75	25 – 35mm	4 to 12mm
SCT12HT85	30 – 45mm	4 to 12mm
SCT12HT100	30 – 60mm	4 to 12mm
SCT12HT125	50 – 85mm	4 to 12mm
SCT12HT150	85 – 110mm	4 to 12mm
SCT12HT195	120 – 155mm	4 to 12mm
SCT12HT225	150 – 185mm	4 to 12mm
SCT12HT250	175 – 210mm	4 to 12mm

Colortite SD Stainless Steel.

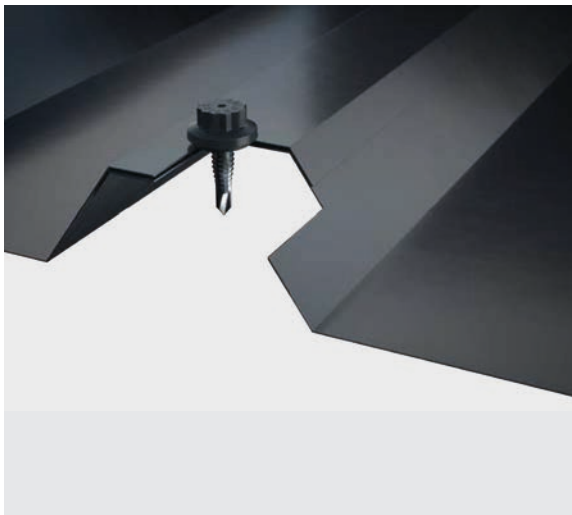
Stainless Stitchers

Max 2 × 1mm thick sheets



Product Code	Size
SCTS25	6.3 × 25mm
SMCTS33	7.5 × 33mm

Stainless washers available in 16, 19 or 29mm.



Stainless Sheet to Timber Gash Point

Max thickness 2 × 0.9mm



Product Code	Size
SCTT50	6.5 × 50mm
SCTT75	6.5 × 75mm

Stainless washers available in 16, 19 or 29mm.



Steel Frame Clip Fix.

Clip Fix

Clip fixings for steel frames pancake head



Product Code	Size	Drilling Capacity
CF326	5.5 × 26mm	1.2 – 4mm
CF1238	5.5 × 38mm	4 – 12mm

Self Coring Carbon Fixing

Fixings for Topdek panels



Product Code	Size	Drilling Capacity
TD5.5X30	5.5 × 30mm	1.2 – 4mm
TD1245	5.5 × 45mm	4 – 12mm

Low Profile Fixings Carbon Steel.

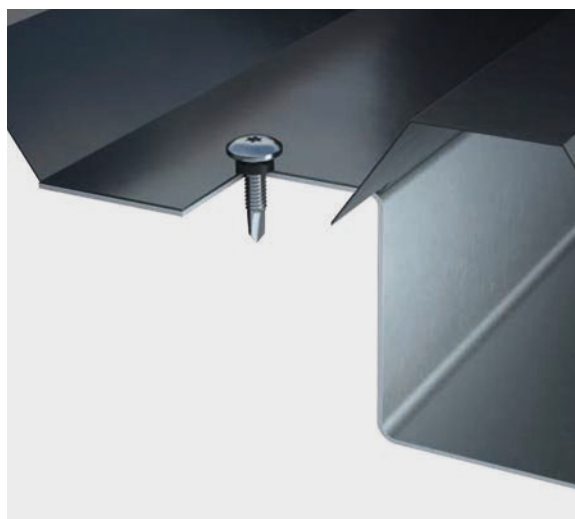
Light Section Fixings

Drill and fix into cold rolled sections



Product Code	*ETL	Drilling Capacity
LP325	13mm	1.2 to 3mm
LP438	26mm	1.2 to 4mm
LP457	45mm	1.2 to 4mm
LP470	58mm	1.2 to 4mm

Provided with P10 EPDM rubber washer.



Heavy Section Fixings

Drill and fix into hot rolled sections



Product Code	*ETL	Drilling Capacity
LP1238	17mm	4 to 12mm
LP1250	29mm	4 to 12mm
LP1267	46mm	4 to 12mm

Provided with P10 EPDM rubber washer.



*ETL is the Effective Thread Length – the usable portion of the fixing.

Low Profile Fixings Carbon Steel.

Carbon Stitchers

For Side Laps



Product Code	Size
LPS25	6.3 x 22mm

Available with P10 EPDM rubber washer or G12 galvanised washer.

Composite Panel to Light Section

Drill and fix into cold rolled sections



Product Code	Suits Panel Thickness
LPHT75	40 - 60mm
LPHT115	60 - 95mm

Provided with P10 EPDM rubber washer.

Steel to Timber



Product Code	Size
LPT4835	4.8 x 35mm

Provided with P10 EPDM rubber washer.

Powder Coated Finish



Powder coated finish available. Please consult a member of our sales team for more information.

Low Profile Fixings Stainless Steel.

Light Section Fixings

Drill and fix into cold rolled sections



Product Code	*ESL	Drilling Capacity
SLP325	10mm	1.2 to 3mm
SLP438	23mm	1.2 to 4mm
SLP450	30mm	1.2 to 4mm
SLP480	60mm	1.2 to 4mm

Available with 12mm stainless washer or P10 EPDM rubber washer.

Heavy Section Fixings

Drill and fix into hot rolled sections



Product Code	*ESL	Drilling Capacity
SLP1240	16mm	4 to 12mm
SLP1260	36mm	4 to 12mm
SLP1280	56mm	4 to 12mm

Available with 12mm stainless washer or P10 EPDM rubber washer.

Composite Panel to Light Section



Product Code	Suits Panel Thickness
SLPHT130	55 - 110mm

Available with 12mm stainless washer or P10 EPDM rubber washer.

Steel to Timber



Product Code	Size
SLPT35	4.8 x 35mm

Available with 12mm stainless washer or P10 EPDM rubber washer.

*ESL = Effective Stainless Length.

Rivets.

Multi Grip Rivets

A versatile rivet available in a wide range of colours



Product Code	Grip Range	Length
MG4810	1.0 – 6.0mm	10mm
MG4815	5.0 – 10.5mm	15mm

Pilot hole drill size = 4.9/5.1mm
Spiked caps to be used with the above.
Available in painted finish.

Firewall Rivets

Steel mandrel & body typically used for firewall applications



Product Code	Grip Range	Length
FWR3210	1.1 – 4.0mm	10mm
FWR4.8	5.0 – 7.0mm	12.0mm

Also available in white.

Griptite Rivets

A Versatile waterproof rivet for trimline gutters & construction applications



Product Code	Grip Range	Length
GR3	0.5 – 4.8mm	17.5mm
GR4	1.5 – 6.4mm	19.1mm
GR6	4.8 – 9.5mm	22.2mm
GR8	7.9 – 12.7mm	25.4mm
GR10	11.1 – 15.9mm	28.6mm
GR12	14.3 – 19.1mm	31.8mm

Pilot hole drill size = 5.3mm
Small round caps to be used with the above.

Spike Cap

To be used with Multi Grip & Sealtite Rivets



Small Round Cap

To be used with Griptite Rivets



Available in a wide range of colours, please consult our sales team.

Rivets.

Rivets rely on expansion to fix materials together as they're usually too thin to allow thread forming. As a result rivets are rated by their tensile strength rather than pull out values.

Rivets are also required in applications where a very flush head is required to be as unobtrusive as possible. An accurate pilot hole is essential for best results, oversized holes can lead to loss of grip and premature failure.

Sealtite Rivets

A closed end low profile dome head



Product Code	Material	Length	Grip Range
STR4811	Steel/ Aluminium	11.0mm	4.5 – 6.0mm
STR4811SS	Stainless/ Aluminium	11.0mm	4.5 – 6.0mm
STR4814	Steel/ Aluminium	14.0mm	7.5 – 9.0mm
STR4814SS	Stainless/ Aluminium	14.0mm	7.5 – 9.0mm

Pilot hole drill size = 4.9/5.1mm
Spiked caps to be used with the above.
Available in painted finish.

Large Flange Rivets

All stainless steel, for fixing a variety of materials without causing damage to panel surfaces



Product Code	Grip Range	Length
LFRSS4810	2.5 – 5.0mm	10.5mm
LFRSS4813	5.0 – 8.5mm	13.5mm
LFRSS4817	8.5 – 12mm	17.2mm
LFRSS4820	12.0 – 15.5mm	20.5mm
LFRSS4823	15.5 – 18.5mm	23.5mm

Pilot hole drill size = 4.9/5.1mm
Other rivets available, please consult our sales team.

Timber to Steel Carbon Fixings.

Timberfast drill a clearance hole through the timber with the reamer wings. The wings break off when they come into contact with the steel, enabling drilling to continue through the steel giving a firm positive fix every time.

Timber to Light Section

Pozidrive Countersunk Head



Size	MAX Timber Thickness	Drilling Capacity	Diameter
TFD40	20mm	1.2 – 4mm	4.8mm
TFD5.540	17mm	1.2 – 4mm	5.5mm
TFD60	37mm	1.2 – 4mm	5.5mm
TFD80	57mm	1.2 – 4mm	5.5mm
TFD110	87mm	1.2 – 4mm	5.5mm
TFD460	30mm	3.0 – 5.0mm	5.5mm

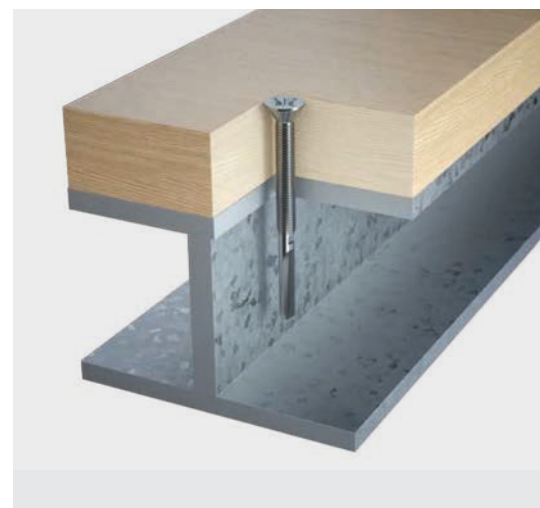


Timber to Heavy Section

Pozidrive Countersunk Head



Size	MAX Timber Thickness	Drilling Capacity	Diameter
TFD1260	25mm	4 – 12mm	5.5mm
TFD1285	50mm	4 – 12mm	5.5mm
TFD12110	75mm	4 – 12mm	5.5mm
TFD12130	95mm	4 – 12mm	5.5mm
TFD12150	115mm	4 – 12mm	5.5mm



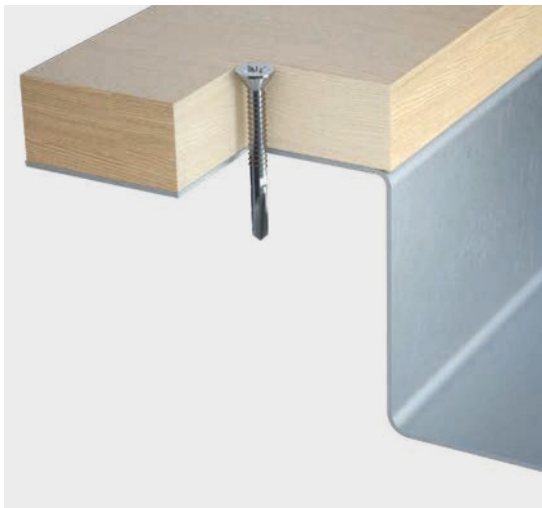
Timber to Steel Stainless Fixings.

Timber to Light Section

Pozidrive Countersunk Head



Size	MAX Timber Thickness	Drilling Capacity	Diameter
SSTFD45	20mm	1.2 – 4mm	4.8mm
SSTFD65	40mm	1.2 – 4mm	5.5mm
SSTFD80	55mm	1.2 – 4mm	5.5mm



Timber to Heavy Section

Pozidrive Countersunk Head



Size	MAX Timber Thickness	Drilling Capacity	Diameter
SSTFD1260	20mm	4 – 12mm	5.5mm
SSTFD1280	40mm	4 – 12mm	5.5mm



Fibre Cement Fixings.

For crown fixing of fibre cement roof sheets, an easy to use alternative to hook bolts on roofs up to 15° pitch. Supplied with stainless steel and rubber baz washer. It is imperative for roof pitches above 15° that you consult Fixing Point for advice.

Light Section Fixing

Drill and fix into cold rolled steel



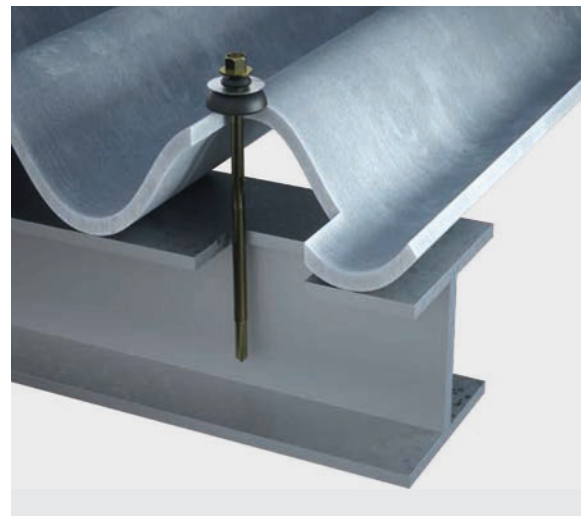
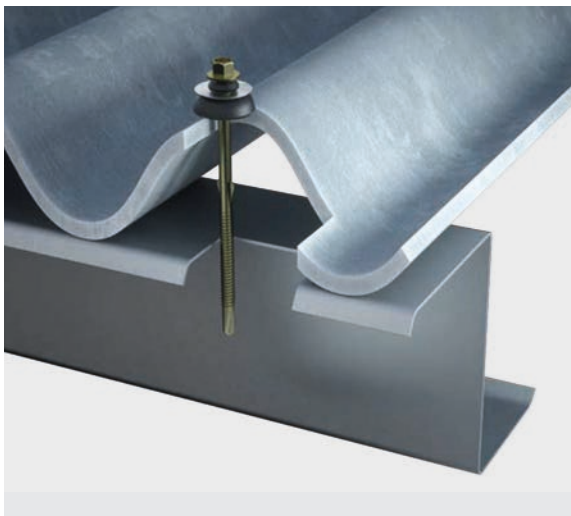
Product Code	Build Up	Drilling Capacity
FC110BAZ	45 – 80mm	1.2 – 4mm
FC130BAZ	70 – 100mm	1.2 – 4mm
FC150BAZ	80 – 115mm	1.2 – 4mm
FC190BAZ	70 – 150mm	1.2 – 4mm
FC230BAZ	140 – 190mm	1.2 – 4mm

Heavy Section Fixings

Drill and fix into hot rolled steel



Product Code	Build Up	Drilling Capacity
FC12125BAZ	45 – 80mm	4 – 12mm
FC12150BAZ	70 – 100mm	4 – 12mm
FC12180BAZ	100 – 130mm	4 – 12mm
FC12200BAZ	120 – 150mm	4 – 12mm
FC12235BAZ	160 – 195mm	4 – 12mm



Fibre Cement Fixings.

Carbon Fixings to Timber



Product Code	Build Up
FCT130BAZ	45 - 65mm

Stainless Fixings to Timber



Product Code	Build Up
SSFCT130BAZ	45 - 65mm



Stainless Countersunk Woodscrews.

Countersunk Woodscrews



Product Code	Dimensions
SSCK4.0X20	4 × 20mm
SSCK4.0X25	4 × 25mm
SSCK4.0X30	4 × 30mm
SSCK4.0X40	4 × 40mm
SSCK5.0X50	5 × 50mm
SSCK5.0X60	5 × 60mm
SSCK5.0X70	5 × 70mm
SSCK5.0X80	5 × 80mm
SSCK6.0X80	6 × 80mm
SSCK6.0X100	6 × 100mm
SSCK6.0X120	6 × 120mm
SSCK6.0X130	6 × 130mm
SSCK6.0X140	6 × 140mm
SSCK6.0X200	6 × 200mm

Other sizes available please contact a member of the sales team.

Self-Tapping Fixings.

TSAB Stainless Steel Fixings are designed for securing cladding sheets to purlins, rails and timber sections. Requires a suitable pilot hole, also available in carbon steel.

Type 304 modified stainless is recommended in most corrosive environments. However it is not suitable for swimming pools or other high chlorine or chloride environments. Consult our technical department for further information.

AB – Point Self Tapper



Product Code	Size
TSAB25	6.3 × 25mm
TSAB30	6.3 × 30mm
TSAB40	6.3 × 40mm
TSAB50	6.3 × 50mm
TSAB65	6.3 × 65mm
TSAB75	6.3 × 75mm
TSAB90	6.3 × 90mm
TSAB100	6.3 × 100mm

Pilot Hole Guidance

Material Thickness	Pilot Hole Size
up to 1mm	No pilot required
1 – 2mm	4.9mm
2 – 3mm	5.1mm
3 – 5mm	5.3mm

The "A.B" thread provides high pull out values up to 5mm thick steel & timber (40mm penetration required).

Anything between 5 – 12mm thick the "B" thread should be used which are available on request, please consult our sales team.

TSAB fixings can be supplied with Colortite heads – Codes change to CTSAB.

Con-Fix.

Con-Fix are ideal for securing materials to concrete and brickwork. Con-Fix require a suitable pilot hole.

Con-Fix TH Head

Used for fixing steel and other substrates to masonry



Product Code	Size
TH432	6.3 × 32mm
TH445	6.3 × 45mm
TH457	6.3 × 57mm
TH470	6.3 × 70mm
TH482	6.3 × 82mm
TH4100	6.3 × 100mm
TH4125	6.3 × 125mm

Galvanised washers available in 16, 19 or 29mm.

Stainless Concrete Fixing



Product Code	Size
SSTH445	6.3 × 45mm
SSTH475	6.3 × 75mm

Stainless washers available in 16, 19 or 29mm.

Concrete Screw A4

Concrete screw with hexagon head and moulded washer A4 stainless steel



Product Code	Size
FBS8X70/5US	8 × 70mm
FBS8X80/15US	8 × 80mm
FBS8X90/25US	8 × 90mm
FBS10X90/5US	10 × 90mm
FBS10X100/15US	10 × 100mm
FBS10X120/35US	10 × 120mm
FBS12X130/30US	12 × 130mm

Specifications

- Correct pilot hole size will vary depending on the substrate, please consult our sales team for advice.
- Accurate drilling of the substrate is of primary importance, users should check for themselves that the product is firmly embedded.
- Allow a minimum embedment of 40mm into sound concrete.
- Site tests should be carried out to obtain pull out figures for each application. The company offers site testing as part of its services.

Insulation Support.

Insulation Hangers

For use in securing insulation on side cladding



Product Code	Size
IH40	40mm
IH62	62mm
IH89	89mm
IH114	114mm
IH140	140mm
IH165	165mm
IH203	203mm
IH270	270mm

Insulation Fixing

To fix soft insulation materials in rear-ventilated facades



Product Code	Tube Length	Plate Diameter
DHK40	40mm	90mm
DHK60	60mm	90mm
DHK80	80mm	90mm
DHK100	100mm	90mm
DHK120	120mm	90mm
DHK140	140mm	90mm
DHK160	160mm	90mm
DHK180	180mm	90mm
DHK200	200mm	90mm
DHK220	220mm	90mm

To fix pressure-resistant insulation materials in rear-ventilated facades.

DHK45/40	40mm	45mm
DHK45/60	60mm	45mm
DHK45/80	80mm	45mm
DHK45/100	100mm	45mm

Chemical Fixings and Accessories.

Super Bond Mortar

Superbond mortar achieves a very high load level for safe use in cracked and non-cracked concrete



Product Code	Size
FISSB390S	390ml Cartridge + 2 x FISMR
FISSB585S	585ml Cartridge + 2 x FISMR
FISSBHIGHSPEED390S	390ml Cartridge + 2 x FISMR

The high speed mortar is also available for faster curing, when installing at extreme minus temperatures (from -20c)

Threaded Rods

Threaded rods available in zinc plated steel grades 5.8 or 8.8 and A4 stainless steel



Product Code	Size
FISAM10X150	M10 × 150mm
FISAM10X170	M10 × 170mm
FISAM10X200	M10 × 200mm
FISAM12X120	M12 × 120mm
FISAM12X140	M12 × 140mm
FISAM12X160	M12 × 160mm
FISAM12X180	M12 × 180mm
FISAM16X130	M16 × 130mm
FISAM16X175	M16 × 175mm
FISAM16X200	M16 × 200mm
FISAM16X250	M16 × 250mm
FISAM16X300	M16 × 300mm
FISAM20X245	M20 × 245mm
FISAM20X290	M20 × 290mm

Chemical Fixings and Accessories.

Static Mixer



Product Code	Size
FISMR	To suit 390ml cartridges (pack of 10)
FISUMR	To suit 585ml cartridges (pack of 10)

Dispenser



Product Code	Size
FISDMS	To suit cartridges up to 390ml
FISDMSL	To suit cartridges up to 585ml

Cleaning Brush



Product Code	Size
BS10	11mm dia. brush to suit 10mm dia. drill
BS12	13mm dia. brush to suit 12mm dia. drill
BS14	16mm dia. brush to suit 14mm dia. drill
BS16/18	20mm dia. brush to suit 16 or 18mm dia. drill
BS24	26mm dia. brush to suit 24mm dia. drill
BS28	30mm dia. brush to suit 28mm dia. drill
BS35	40mm dia. brush to suit 30, 32 or 35mm dia. drill

Anchor Bolts.

For highest demands. Powerful and flexible with better performance. Available in zinc plated steel & A4 stainless steel.



Product Code	Thread (Dia. x Length)	Overall Length
FAZII8/10	M8 × 38mm	75mm
FAZII8/30	M8 × 58mm	85mm
FAZII8/50	M8 × 78mm	105mm
FAZII10/10	M10 × 53mm	85mm
FAZII10/50	M10 × 93mm	125mm
FAZII12/10	M12 × 61mm	100mm
FAZII12/20	M12 × 71mm	110mm
FAZII12/30	M12 × 81mm	120mm
FAZII12/100	M12 × 151mm	190mm
FAZII16/100	M16 × 159mm	210mm

Approved for

- Concrete C20/25 to C50/60 cracked.
- Concrete C20/25 to C50/60 non-cracked.

Also suitable for

- Concrete C12/15
- Natural stone with dense structure.

Frame Fixings.

Specialist frame fixing with short drill hole depth. Available in zinc plated steel and A4 stainless steel.



Product Code	Length
SXR10X60FUS	60mm
SXR10X80FUS	80mm
SXR10X100FUS	100mm
SXR10X120FUS	120mm
SXR10X140FUS	140mm
SXR10X160FUS	160mm
SXR10X180FUS	180mm
SXR10X200FUS	200mm
SXR10X230FUS	230mm
SXR10X260FUS	260mm

All require 10mm pilot hole.

Hammer Fixings.

Hammer in plug with zinc plated steel nail for simple, fast and economical installation.

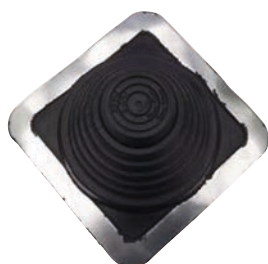


Product Code	Diameter	Anchor Length	Max. Fixture Thickness
N5X25/1F	5mm	25mm	1mm
N5X30/5F	5mm	30mm	5mm
N5X40/15F	5mm	40mm	15mm
N5X50/25F	5mm	50mm	25mm
N6X35/5F	6mm	35mm	5mm
N6X40/10F	6mm	40mm	10mm
N6X60/30F	6mm	60mm	30mm
N6X80/50F	6mm	80mm	50mm
N8X60/20F	8mm	60mm	20mm
N8X80/40F	8mm	80mm	40mm
N8X100/60F	8mm	100mm	60mm
N8X120/80F	8mm	120mm	80mm

Additional Products.

Flashtite: EPDM

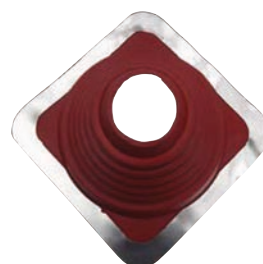
Provides a permanent seal that controls gaseous or liquid environments to eliminate leakage and odour contamination. Covers all applications from -55C to +135C



Product Code	Pipe size	Colour
CPMINI	3 – 19mm	Black
CP1	6 – 70mm	Black
CP2	22 – 101mm	Black
CP3	6 – 146mm	Black
CP4	70 – 177mm	Black
CP5	101 – 209mm	Black
CP6	121 – 254mm	Black
CP7	140 – 292mm	Black
CP8	171 – 343mm	Black
CP9	241 – 520mm	Black
CPMAXI	304 – 724mm	Black

Flashtite: Silicone

Provides a permanent seal that controls gaseous or liquid environments to eliminate leakage and odour contamination. For environmental extremes, from -74C to +260C

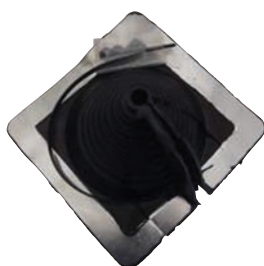


Product Code	Pipe size	Colour
HP1	6 – 70mm	Red
HP2	22 – 101mm	Red
HP3	6 – 146mm	Red
HP4	70 – 177mm	Red
HP5	101 – 209mm	Red
HP6	121 – 254mm	Red
HP7	140 – 292mm	Red
HP8	171 – 343mm	Red
HP9	241 – 520mm	Red
HPMAXI	304 – 724mm	Red

Additional Products.

Retro-fit : EPDM

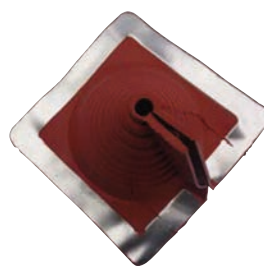
Designed to make a neat weather proof repair or for retrofitting to existing pipe work. Covers all applications from -55C to +135C



Product Code	Pipe size	Colour
RETROFITCOLD1	12.7 – 101.6mm	Black
RETROFITCOLD2	101.6 – 235mm	Black
RETROFITCOLD3	235 – 413mm	Black

Retro-fit : Silicone

Designed to make a neat weather proof repair or for retrofitting to existing pipe work. For environmental extremes, from -74C to +260C



Product Code	Pipe size	Colour
RETROFITHOT1	12.7 – 101.6mm	Red
RETROFITHOT2	101.6 – 235mm	Red
RETROFITHOT3	235 – 413mm	Red

Additional Products.

Hex Caps

Plastic caps for hex head screws



Product Code	Washer size	Colour
HC16	16mm	Various
HC19	19mm	Various
HC29	29mm	Various

Drive Bits

Drive bits for screwdrivers



Product Code	To Suit
5/16HALFENDRIVE	8mm hex head
5/16SOCKETW/CLIP (for stainless steel)	8mm hex head
TSOCKET	11mm Colortite Head
PH2	Phillips No.2
T25TORXBIT	Torx 25

Other sizes available.

Horse Shoe Packers

To perform packing, levelling, spacing and shimming



Product Code	Size	Colour
1MMPACKERYELLOW	1×55×43mm	Yellow
2MMPACKERGREEN	2×55×43mm	Green
3MMPACKERBLUE	3×55×43mm	Blue
4MMPACKERRED	4×55×43mm	Red
5MMPACKERBEIGE	5×55×43mm	Beige
6MMPACKERBLACK	6×55×43mm	Black
10MMPACKERGREY	10×55×43mm	Grey

Spacer Ferrules

Plastic spacer ferrules



Product Code	Size	Colour
FPS22	22mm	White
FPS25	25mm	White
FPS30	30mm	White
FPS35	35mm	White
FPS42	42mm	White

Colour Range and Options.

RAL 1000	Green Beige	RAL 4009	Pastel Violet	RAL 7000	Alaska Grey	RAL 9004	Signal White
RAL 1001	Beige	RAL 4010	Telemagenta	RAL 7001	Silver Grey	RAL 9005	Jet Black
RAL 1002	Sand Yellow	RAL 5000	Violet Blue	RAL 7002	Olive Grey	RAL 9006	Metallic Silver
RAL 1003	Signal Yellow	RAL 5001	Green Blue	RAL 7003	Moss Grey	RAL 9007	Grey Aluminium
RAL 1006	Maize Yellow	RAL 5002	Ultramarine Blue	RAL 7004	Signal Grey	RAL 9010	Pure White
RAL 1007	Daffodil Yellow	RAL 5003	Sapphire Blue	RAL 7005	Mouse Grey	RAL 9011	Graphite Black
RAL 1013	Oyster White	RAL 5004	Black Blue	RAL 7006	Beige Grey	RAL 9016	Traffic White
RAL 1014	Ivory	RAL 5005	Signal Blue	RAL 7008	Khaki Grey	RAL 9017	Traffic Black
RAL 1015	Light Ivory	RAL 5007	Brilliant Blue	RAL 7009	Green Grey	RAL 9018	Papyrus White
RAL 1016	Sulphur Yellow	RAL 5008	Grey Blue	RAL 7010	Tarpaulin Grey	RAL 9022	Peal Light Grey
RAL 1018	Zinc Yellow	RAL 5009	Azure Blue	RAL 7011	Iron Grey	RAL 9023	Pearl Dark Grey
RAL 1019	Grey Beige	RAL 5010	Gentian Blue	RAL 7012	Slate Grey	BS 00E53	Black
RAL 1021	Rape Yellow	RAL 5011	Steel Blue	RAL 7013	Brown Grey	BS 00E55	White
RAL 1023	Traffic Yellow	RAL 5012	Light Blue	RAL 7015	Slate Grey	BS 04C39	Terracotta
RAL 1024	Ochre Yellow	RAL 5013	Cobalt Blue	RAL 7016	Anthracite Grey	BS 04E53	Poppy Red
RAL 1028	Melon Yellow	RAL 5014	Pigeon Blue	RAL 7021	Black Grey	BS 08B29	Vandyke Brown
RAL 1032	Broom Yellow	RAL 5015	Sky Blue	RAL 7023	Concrete Grey Graphite	BS 10A05	Goosewing Grey
RAL 1035	Pearl Beige	RAL 5017	Traffic Blue	RAL 7024	Grey	BS 10B19	Mushroom
RAL 1036	Pearl Gold	RAL 5018	Turquoise Blue	RAL 7030	Stone Grey	BS 10C31	Honesty
RAL 1037	Sun Yellow	RAL 5019	Capri Blue	RAL 7031	Blue Grey	BS 12B17	Meadowland
RAL 2000	Yellow Orange	RAL 5021	Water Blue	RAL 7032	Pebble Grey	BS 12B21	Moorland Green
RAL 2001	Red Orange	RAL 5022	Night Blue	RAL 7033	Cement Grey	BS 12B27	Olive Green
RAL 2002	Vermilion	RAL 5023	Distant Blue	RAL 7034	Yellow Grey	BS 12B29	Juniper Green
RAL 2003	Pastel Orange	RAL 5024	Pastel Blue	RAL 7035	Oyster	BS 12E53	Linden Green
RAL 2004	Pure Orange	RAL 6000	Patina Green	RAL 7036	Platinum Grey	BS 14C37	Jade
RAL 2008	Bright Red Orange	RAL 6001	Emerald Green	RAL 7037	Dusty Grey	BS 14C39	Pinewood Green
RAL 2009	Traffic Orange	RAL 6002	Heritage Green	RAL 7039	Quartz Grey	BS 14E53	Veronia Green
RAL 2011	Deep Orange	RAL 6003	Olive Green	RAL 7040	Window Grey	BS 16C37	Reef Garden
RAL 2013	Pearl Orange	RAL 6004	Blue Green	RAL 7042	Traffic Grey A	BS 18B17	Albatross
RAL 3000	Flame Red	RAL 6005	Moss Green	RAL 7043	Traffic Grey B	BS 18B25	Merlin Grey
RAL 3002	Carmine Red	RAL 6006	Grey Olive	RAL 7044	Silk Grey	BS 18B29	Slate Blue
RAL 3003	Ruby Red	RAL 6007	Bottle Green	RAL 7045	Telegrey 1	BS 18C35	Turquoise
RAL 3004	Purple Red	RAL 6009	Fir Green	RAL 7047	Telegrey 4	BS 18C37	Wedgwood Blue
RAL 3005	Wine Red	RAL 6011	Reseda Green	RAL 7048	Pearl Mouse Grey	BS 18C39	Ocean Blue
RAL 3007	Black Red	RAL 6012	Black Green	RAL 8001	Ochre Brown	BS 18E50	Light Blue
RAL 3009	Oxide Red	RAL 6013	Reed Green	RAL 8002	Signal Brown	BS 18E53	Solent Blue
RAL 3011	Brown Red	RAL 6016	Turquoise Green	RAL 8003	Clay Brown	BS 18E58	Britannia
RAL 3012	Beige Red	RAL 6017	May Green	RAL 8004	Copper Brown	BS 20E51	Cornflower Blue
RAL 3013	Tomato Red	RAL 6018	Yellow Green	RAL 8007	Fawn Brown		
RAL 3014	Antique Pink	RAL 6019	Pastel Green	RAL 8012	Red Brown		
RAL 3016	Coral Red	RAL 6021	Pale Green	RAL 8014	Sepia Brown		
RAL 3020	Traffic Red	RAL 6022	Olive Drab	RAL 8015	Chestnut Brown		
RAL 3027	Raspberry Red	RAL 6024	Traffic Green	RAL 8016	Mahogany Brown		
RAL 4001	Red Lilac	RAL 6025	Fern Green	RAL 8017	Chocolate Brown		
RAL 4003	Heather Violet	RAL 6027	Light Green	RAL 8019	Grey Brown		
RAL 4004	Claret Violet	RAL 6028	Pine Green	RAL 8022	Black Brown		
RAL 4005	Blue Lilac	RAL 6029	Mint Green	RAL 8023	Orange Brown		
RAL 4006	Traffic Purple	RAL 6032	Signal Green	RAL 8024	Beige Brown		
RAL 4007	Purple Violet	RAL 6033	Mint Turquoise	RAL 9001	Cream		
RAL 4008	Signal Violet	RAL 6034	Pastel Turquoise	RAL 9002	Grey White		

Colortite

Our Colortite and painted products appear before the rest of the products codes with either BS or RAL. Colortite offers greatly improved corrosion resistance, the Colortite head is factory applied for a tough and durable finish.

Powdertite Products

We have a range of fixings available that are powder coated. Low profile products can be supplied with a powder coated head to match most common sheet finishes. Please consult a member of our sales team for more information.

Powder Coated Hex Head Fixings (New to Fixing Point)

Some sizes/colours may incur a surcharge. Please consult a member of our sales team for more information.

Quality and Reliability.

Fixing Point is an active member of the Metal Cladding and Roofing Manufacturers Association (MCRMA). MCRMA promotes best practice within the industry and has a wealth of technical and regulatory data that is accessible to members and end users via the MCRMA website.

The Company is certified to operate a **BS EN ISO 9001:2015** Quality Assurance scheme to ensure that every item sold meets our high product performance specifications.

Manufacturing facilities include nylon injection moulding plant, product assembly, roll forming of spacer grid bars, powder coating and paint spraying.

Our long established quality control laboratory at our head office tests products for their corrosion resistance, drilling ability, mechanical strength and dimensional accuracy to ensure that our Quality Assurance standards are maintained.

We enjoy long standing partnering arrangements with our key suppliers to maintain consistency and reliability; we do not readily switch sources of supply.

Fixing Point has a policy of continuous improvement and reserves the right to withdraw or replace items from time to time without notice.

© May 2018
Issue No.





Flat Roof Products

Contents.

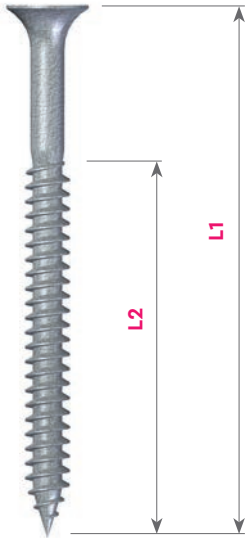
Find what you need quickly...

Insulation to Deck/Timber (Eurofast EDS-S)	03
Carbon Insulation to Deck (Eurofast EDS-B)	04
Bi Met Insulation to Deck (Eurofast EDS-SRB)	05
Carbon Woodscrew (Eurofast EDS-H)	06
Insulation to Concrete/Timber (Eurofast EFHD)	07
Insulation to Concrete (Eurofast DFCE)	08
Insulation to Steel Deck (OMG RS – DFDS-55)	09
Insulation to Steel Deck (OMG XHD – DFHD-67)	10
Insulation to Wood Fibre Substrates and Gypsum (OMG GYPTEC)	11
Aluzinc Pressure Plate (Eurofast DVP)	12
Telescopic Membrane Tube (Eurofast TLK-45)	16
Telescopic Membrane Tube (Eurofast KMT-8240)	17
Telescopic Insulation Tube (Eurofast TLK-75)	18
Specialist Tool Bits (PH2, TORX25)	19

Eurofast EDS-S.

Steel >0.70 <0.88

Insulation to Deck/Timber



Technical Details

Roofing screw, bugle head with EF-headmark PH-2 recess, hardened S-Point. Coating: Magni Silver. 15-cycles of the Kesternich test acc. DIN 500017 S2,0L.

Application

Steel deck from 0.70 up to 0.88mm and timber.

Pressure Plates/ Telescopic Tubes

Metal plates DVP-EF and Telescopic Plastic tubes.

Required Length

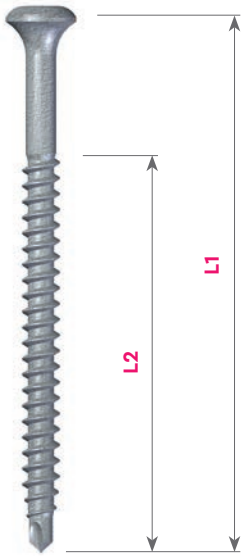
Build up + min. 20mm.

Product Code	Diameter	L1	L2	Quantity
EDSS48025	4.8mm	25mm	20mm	1000
EDSS48030	4.8mm	30mm	25mm	1000
EDSS48040	4.8mm	40mm	35mm	1000
EDSS48050	4.8mm	50mm	45mm	1000
EDSS48060	4.8mm	60mm	55mm	500
EDSS48070	4.8mm	70mm	60mm	500
EDSS48080	4.8mm	80mm	70mm	500
EDSS48090	4.8mm	90mm	80mm	500
EDSS48100	4.8mm	100mm	80mm	500
EDSS48110	4.8mm	110mm	80mm	500
EDSS48120	4.8mm	120mm	80mm	500
EDSS48130	4.8mm	130mm	80mm	500
EDSS48140	4.8mm	140mm	80mm	500
EDSS48150	4.8mm	150mm	80mm	500
EDSS48160	4.8mm	160mm	80mm	500
EDSS48170	4.8mm	170mm	80mm	500
EDSS48180	4.8mm	180mm	80mm	500
EDSS48200	4.8mm	200mm	80mm	500
EDSS48220	4.8mm	220mm	80mm	500
EDSS48240	4.8mm	240mm	80mm	500
EDSS48260	4.8mm	260mm	80mm	500
EDSS48280	4.8mm	280mm	80mm	500
EDSS48300	4.8mm	300mm	80mm	500

Eurofast EDS-B.

Steel >0.88 – max 2 × 1.25mm

Carbon Insulation to Deck up to 2 × 1.25mm



Technical Details

Roofing screw, bugle head with EF-headmark. Torx25 recess, reduced drill point. Coating: Magni-Silver. 15-cycles of the Kesternich test acc. DIN 50018 S2,0L.

Application

Steel deck up to 2 × 1.25mm.

Pressure Plates/ Telescopic Tubes

Metal plates DVP-EF and Telescopic Plastic tubes.

Required Length

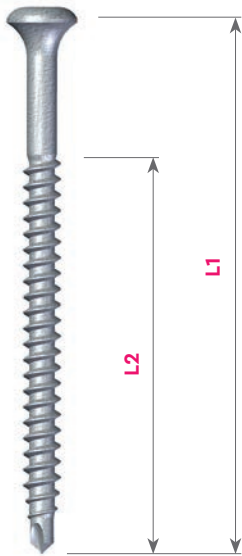
Build up + min. 20mm.

Product Code	Diameter	L1	L2	Quantity
EDSB48035	4.8mm	35mm	35mm	1000
EDSB48050	4.8mm	50mm	50mm	1000
EDSB48060	4.8mm	60mm	50mm	1000
EDSB48070	4.8mm	70mm	50mm	1000
EDSB48080	4.8mm	80mm	50mm	1000
EDSB48090	4.8mm	90mm	50mm	1000
EDSB48100	4.8mm	100mm	80mm	500
EDSB48110	4.8mm	110mm	80mm	500
EDSB48120	4.8mm	120mm	80mm	500
EDSB48130	4.8mm	130mm	100mm	500
EDSB48140	4.8mm	140mm	100mm	500
EDSB48150	4.8mm	150mm	100mm	500
EDSB48180	4.8mm	180mm	120mm	500
EDSB48210	4.8mm	210mm	120mm	500
EDSB48240	4.8mm	240mm	120mm	500
EDSB48260	4.8mm	260mm	120mm	500
EDSB48280	4.8mm	280mm	120mm	500
EDSB48300	4.8mm	300mm	120mm	500

Eurofast EDS-SRB.

Steel >0.88 – max 2 × 1.25mm

Bi Met Insulation to Deck up to 2 × 1.25mm



Technical Details

Bimetal roofing screw, grade A4, bugle head, with EF-headmark. Torx25 recess, reduced drill-point. Coating: Zinc-Plated.

Application

Steel deck up to 2 × 1.25mm.

Pressure Plates/ Telescopic Tubes

Metal plates DVP-EF and Telescopic Plastic tubes.

Required Length

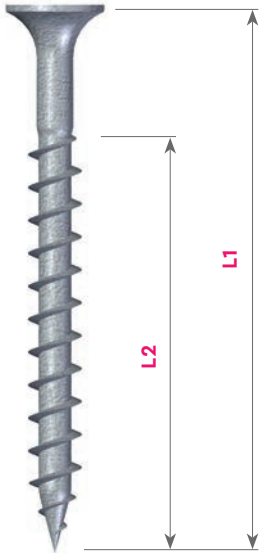
Build up + min. 20mm.

Product Code	Diameter	L1	L2	Quantity
EDSSRB48060	4.8mm	60mm	50mm	500
EDSSRB48080	4.8mm	80mm	50mm	500
EDSSRB48100	4.8mm	100mm	50mm	500
EDSSRB48120	4.8mm	120mm	75mm	500
EDSSRB48140	4.8mm	140mm	75mm	500
EDSSRB48160	4.8mm	160mm	120mm	500
EDSSRB48180	4.8mm	180mm	120mm	500
EDSSRB48210	4.8mm	210mm	120mm	500
EDSSRB48240	4.8mm	240mm	120mm	500

Eurofast EDS-H.

Timber

Carbon Woodscrew



Technical Details

Roofing screw, bugle head with EF-headmark PH-2 recess, hardened S-Point. Coating: Magni-Silver. 15-cycles of the Kesternich test acc. DIN 50017 S2,0L.

Application

Timber/OSB/Plywood.

Pressure Plates/ Telescopic Tubes

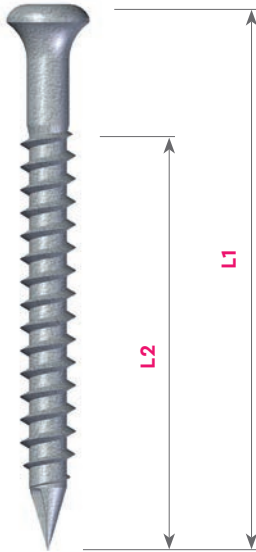
Metal plates DVP-EF and Telescopic Plastic tubes.

Required Length

Build up + wood thickness (min. 18mm).

Product Code	Diameter	L1	L2	Quantity
EDSH50020	5.0mm	20mm	15mm	1000
EDSH50025	5.0mm	25mm	20mm	1000
EDSH50030	5.0mm	30mm	25mm	1000
EDSH50035	5.0mm	35mm	30mm	1000
EDSH50040	5.0mm	40mm	35mm	1000
EDSH50045	5.0mm	45mm	40mm	1000
EDSH50055	5.0mm	55mm	50mm	1000
EDSH50065	5.0mm	65mm	50mm	500
EDSH50075	5.0mm	75mm	50mm	500
EDSH50095	5.0mm	95mm	50mm	500
EDSH50120	5.0mm	120mm	50mm	500

Insulation to Concrete/Timber



Technical Details

Roofing screw, bugle head with EF-headmark. Torx25 head, Ricoh-Point. Coating: Magni-Silver. 15-cycles of the Kesternich test acc. DIN 50018 S2,0L.

Application

Steel deck up to 2 x 1.2mm, timber, lightweight concrete and concrete.

Pressure Plates/ Telescopic Tubes

Metal plates DVP-EF and Telescopic Plastic tubes.

Required Length

Build up: Timber: + min. 18mm/ steel: + min. 20mm/lightweight concrete: + min 55mm/concrete: + min. 25mm.

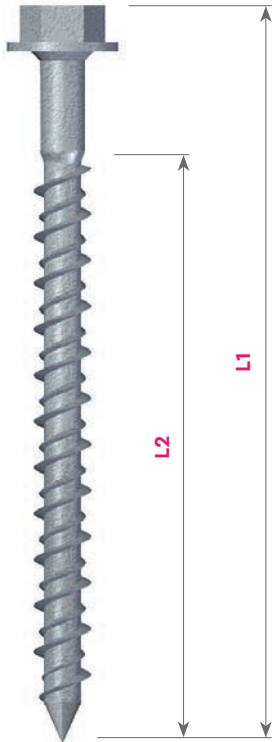
Predrilling with Ø5.0 or Ø5.5mm (depending on concrete density).

Product Code	Diameter	L1	L2	Quantity
EFHD63030	6.3mm	30mm	25mm	1000
EFHD63045	6.3mm	45mm	40mm	1000
EFHD63060	6.3mm	60mm	55mm	500
EFHD63070	6.3mm	70mm	60mm	500
EFHD63080	6.3mm	80mm	60mm	500
EFHD63100	6.3mm	100mm	70mm	500
EFHD63130	6.3mm	130mm	70mm	500
EFHD63160	6.3mm	160mm	70mm	500
EFHD63180	6.3mm	180mm	70mm	500
EFHD63200	6.3mm	200mm	70mm	500
EFHD63230	6.3mm	230mm	70mm	500
EFHD63250	6.3mm	250mm	70mm	500
EFHD63275	6.3mm	275mm	70mm	500
EFHD63300	6.3mm	300mm	70mm	500
EFHD63330	6.3mm	330mm	70mm	500
EFHD63350	6.3mm	350mm	70mm	500
EFHD63400	6.3mm	400mm	70mm	250

Eurofast DFCE.

Concrete

Insulation to Concrete



Technical Details

Roofing screw, 8mm hex head with EF headmark, point – diamond nailpoint. Coating: Magni-Silver. 15-cycles of Kesternich test.

Application

Concrete substrates.

Required Length

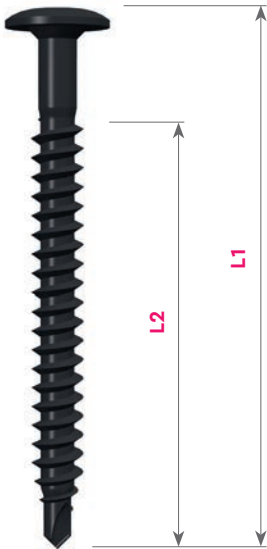
Build up + min 35mm.

Product Code	Diameter	L1	L2	Quantity
DFCF63032	6.3mm	32mm	32mm	1000
DFCF63041	6.3mm	41mm	41mm	1000
DFCF63057	6.3mm	57mm	57mm	1000
DFCF63070	6.3mm	70mm	60mm	1000
DFCF63081	6.3mm	81mm	60mm	1000
DFCF63094	6.3mm	94mm	60mm	1000
DFCF63102	6.3mm	102mm	60mm	1000
DFCF63127	6.3mm	127mm	60mm	1000
DFCF63140	6.3mm	140mm	60mm	500
DFCF63152	6.3mm	152mm	60mm	500
DFCF63178	6.3mm	178mm	60mm	500
DFCF63203	6.3mm	203mm	60mm	500
DFCF63229	6.3mm	229mm	60mm	500
DFCF63254	6.3mm	254mm	60mm	500
DFCF63278	6.3mm	278mm	60mm	250
DFCF63305	6.3mm	305mm	60mm	250

OMG RS (DFDS-55).

Steel deck up to 2 × 1.25mm

Insulation to Steel Deck up to 2 × 1.25mm



Technical Details

OMG roofing screw (FM-approval) PH-3 truss head, reduced drill-point. Coating: Black CR-10. 30 cycles of the Kesternich test acc. DIN 50018 S2,0L.

Application

Steel deck up to 2 × 1.25mm.

Decking Plates

Metal plates DVP-DF/EF and Plastic Locking plate.

Required Length

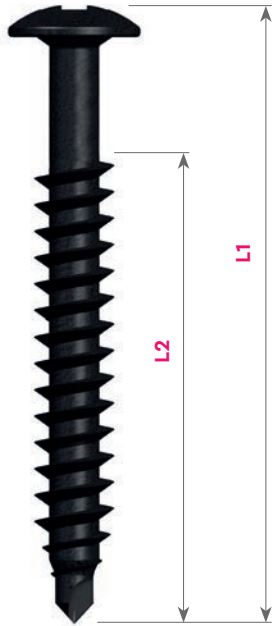
Build up + min. 20mm.

Product Code	Diameter	L1	L2	Quantity
DFDS55040	5.5mm	40mm	40mm	1000
DFDS55055	5.5mm	55mm	55mm	1000
DFDS55075	5.5mm	75mm	75mm	1000
DFDS55095	5.5mm	100mm	75mm	1000
DFDS55125	5.5mm	125mm	75mm	1000
DFDS55150	5.5mm	150mm	100mm	1000
DFDS55175	5.5mm	175mm	100mm	1000
DFDS55200	5.5mm	200mm	100mm	1000

OMG XHD (DFHD-67).

Universal 0.7mm – 0.88mm Steel & Aluminium
>0.63mm, Steel Deck max 2 × 1.25mm

Insulation to Steel Deck/Aluminium



Technical Details

OMG roofing screw (FM-approval)
PH-3 truss head, reduced drill-point. Coating: Black CR-10. 30 cycles of the Kesternich test acc. DIN 50018 S2,0L.

Application

Universal 0.7mm – 0.88mm steel & aluminium >0.63mm, steel deck max 2 × 1.25mm.

Decking Plates

Metal plates DVP-DF/EF and Plastic Locking plate.

Required Length

Build up: Steel and aluminium decks + min. 20mm/others: to be determined.

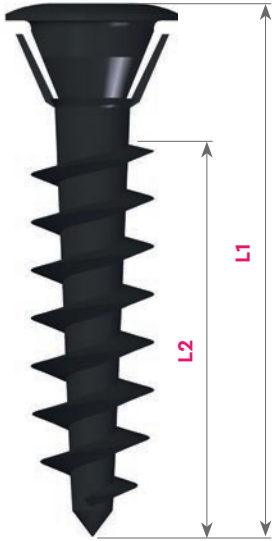
Product Code	Diameter	L1	L2	Quantity
DFHD67032*	6.7mm	32mm	32mm	1000
DFHD67050	6.7mm	50mm	50mm	1000
DFHD67075	6.7mm	75mm	75mm	1000
DFHD67100	6.7mm	100mm	75mm	1000
DFHD67125	6.7mm	125mm	100mm	500
DFHD67150	6.7mm	150mm	100mm	500
DFHD67175	6.7mm	175mm	100mm	500
DFHD67200	6.7mm	200mm	100mm	500
DFHD67225	6.7mm	225mm	100mm	500
DFHD67250	6.7mm	250mm	100mm	500
DFHD67275	6.7mm	275mm	100mm	500
DFHD67300	6.7mm	300mm	100mm	500
DFHD67350	6.7mm	350mm	100mm	250
DFHD67410	6.7mm	410mm	100mm	250
DFHD67460	6.7mm	460mm	100mm	250
DFHD67510	6.7mm	510mm	100mm	250
DFHD67560	6.7mm	560mm	100mm	125

*DFHD67032 is limited to 0.70 – 0.88mm steel deck. Magni-Black coating and not FM approved.

OMG GYPTEC.

Cementitious Wood Fibre and Gypsum

Insulation to Wood Fibre Substrates and Gypsum



Technical Details

OMG Polymer Gyptec (FM Approved). Square drive, made from glass filled nylon which eliminates corrosion & thermal bridging. OMG GYPTEC to be used with the DVP GDL73N washer.

Required Length

Build up + min 50mm.

Application

Cementitious Wood Fibre and Gypsum (pilot hole required for Gypsum).

Product Code	Diameter	L1	L2	Quantity
GDL - 18063	18mm	63mm	38mm	500
GDL - 18076	18mm	76mm	57mm	500
GDL - 18102	18mm	102mm	57mm	500
GDL - 18127	18mm	127mm	57mm	500
GDL - 18152	18mm	152mm	57mm	500
GDL - 18178	18mm	178mm	57mm	500
GDL - 18203	18mm	203mm	57mm	250

Eurofast DVP.

Plates

Aluzinc Pressure Plate

Technical Details

Steel decking plates, with EF-headmark. Coating: Luzinc, 15-cycles of the Kesternich test acc. DIN 50018 S2,0L.



Product Code	Size	Description	Hole	Quantity
DVPDF51N	Ø51 × 0.7mm	Normal	Ø6.5mm	1000



Product Code	Size	Description	Hole	Quantity
DVPDF8240H	82 × 40mm	Flat	Ø7.0mm	1000



Product Code	Size	Description	Hole	Quantity
DVPDF8240XH	82 × 40mm	Deep & Flat	Ø4.85mm	1000



Product Code	Size	Description	Hole	Quantity
DVPEF4010N	Ø40 × 1.0mm	Normal	Ø6.0mm	1000



Product Code	Size	Description	Hole	Quantity
DVPEF5010D	Ø50 × 1.0mm	Deep	Ø6.3mm	1000

Eurofast DVP.

Plates

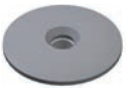
Aluzinc Pressure Plate

Technical Details

Steel decking plates, with EF-headmark. Coating: Luzinc.
15-cycles of the Kesternich test acc. DIN 50018 S2,0L.



Product Code	Size	Description	Hole	Quantity
DVPEF5010N	Ø50 × 1.0mm	Normal	Ø6.3mm	1000



Product Code	Size	Description	Hole	Quantity
DVPEF51N	Ø51 × 0.84mm	Normal	Ø6.7mm	1000



Product Code	Size	Description	Hole	Quantity
DVPEF8040D	80 × 40mm	Deep	Ø6.5mm	1000



Product Code	Size	Description	Hole	Quantity
DVPEF8040N	80 × 40mm	Normal	Ø6.5mm	1000



Product Code	Size	Description	Hole	Quantity
DVP8240XH	82 × 40mm	Deep & Flat	Ø7.0mm	1000

Eurofast DVP.

Plates

Aluzinc Pressure Plate

Technical Details

Steel decking plates, with EF-headmark. Coating: Luzinc.
15-cycles of the Kesternich test acc. DIN 50018 S2,0L.



Product Code	Size	Description	Hole	Quantity
DVPEF7005D	Ø70 × 0.5mm	Deep	Ø5.0mm	1000



Product Code	Size	Description	Hole	Quantity
DVPEF7005N	Ø70 × 0.5mm	Normal	Ø5.0mm	1000



Product Code	Size	Description	Hole	Quantity
DVPEF7005N5	Ø70 × 0.5mm	Normal	Ø5.0mm	1000



Product Code	Size	Description	Hole	Quantity
DVPEF7005NE	Ø70 × 0.5mm	Normal	Ø5.0mm	1000



Product Code	Size	Description	Hole	Quantity
DVPEF7007D	Ø70 × 0.7mm	Deep	Ø6.0mm	1000



Product Code	Size	Description	Hole	Quantity
DVPEF7007H	Ø70 × 0.7mm	Flat	Ø6.0mm	1000

Eurofast DVP.

Plates

Aluzinc Pressure Plate

Technical Details

Steel decking plates, with EF-headmark. Coating: Luzinc.
15-cycles of the Kesternich test acc. DIN 50018 S2,0L.



Product Code	Size	Description	Hole	Quantity
DVPEF7007N	Ø70 × 0.7mm	Normal	Ø6.0mm	1000



Product Code	Size	Description	Hole	Quantity
DVPEF7007N5	Ø70 × 0.7mm	Normal	Ø6.0mm	1000



Product Code	Size	Description	Hole	Quantity
DVPEF7010D	Ø70 × 0.1mm	Deep	Ø6.5mm	1000



Product Code	Size	Description	Hole	Quantity
DVPEF7010N	Ø70 × 0.1mm	Normal	Ø6.5mm	1000



Product Code	Size	Description	Hole	Quantity
DVPGDL73N	Ø70 × 0.1mm	Normal	Ø18mm	1000

Eurofast TLK-45.

Tubes

Telescopic Membrane Tube



Technical Details

Telescopic membrane tubes, with EUROFAST headmark. Material: Polypropylene.

Product Code	Diameter	Length	Quantity
TLK45035	45mm	35mm	500
TLK45065	45mm	65mm	500
TLK45085	45mm	85mm	500
TLK45105	45mm	105mm	500
TLK45135	45mm	135mm	250
TLK45165	45mm	165mm	250
TLK45185	45mm	185mm	250
TLK45225	45mm	225mm	125
TLK45255	45mm	255mm	125
TLK45285	45mm	285mm	125
TLK45320	45mm	320mm	125

Eurofast KMT-8240.

Tubes

Telescopic Membrane Tube



Technical Details

Telescopic membrane tubes complete with pressure plate for single layered roofing membranes.
Materials: Tube – Polyamide PA6.
Pressure plate – Aluzinc.

Product Code	Plate Dimensions	Tube Diameter	Tube Length	Quantity
KMT-15035D82	82 x 40mm	15mm	35mm	250
KMT-15085D82	82 x 40mm	15mm	85mm	250
KMT-15135D82	82 x 40mm	15mm	135mm	250
KMT-15185D82	82 x 40mm	15mm	185mm	250
KMT-15255D82	82 x 40mm	15mm	255mm	250
KMT-15285D82	82 x 40mm	15mm	285mm	250
KMT-15320D82	82 x 40mm	15mm	320mm	250

Eurofast TLK-75.

Tubes

Telescopic Insulation Tube

**Technical Details**

Telescopic insulation tubes,
with EUROFAST headmark.
Material: Polypropylene.

Product Code	Diameter	Length	Quantity
TLK75035	75mm	35mm	250
TLK75065	75mm	65mm	250
TLK75085	75mm	85mm	250
TLK75105	75mm	105mm	250
TLK75135	75mm	135mm	250
TLK75165	75mm	165mm	250
TLK75185	75mm	185mm	250

Specialist Tool Bits.

PH2



Product Code	Type	Length
PH2X150	PH2	150mm
PH2X250	PH2	250mm
PH2X300	PH2	300mm

TORX25



Product Code	Type	Length
T25X150	TORX25	150mm
T25X250	TORX25	250mm
T25X300	TORX25	300mm



Gridtite and Gridtite GP

Contents.

Find what you need quickly...

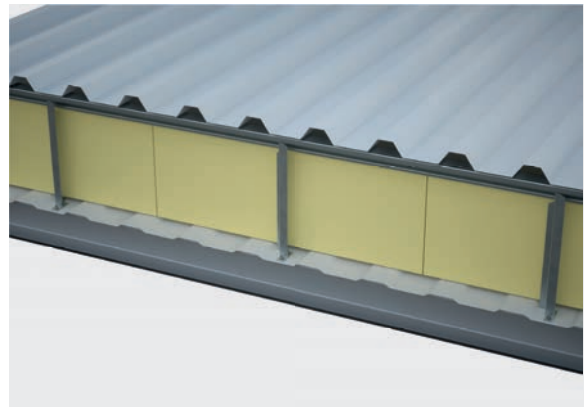
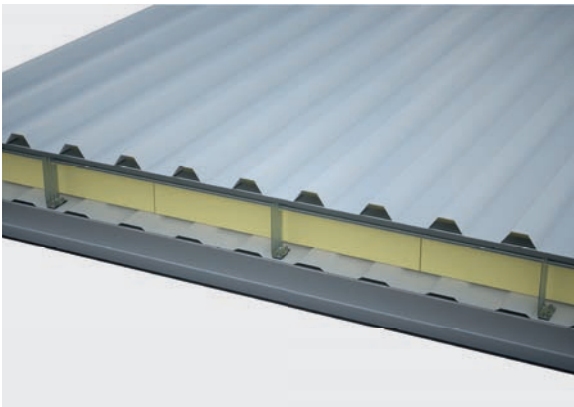
Gridtite®	03
Fitting the bracket	05
Thermal Performance	06
Structural Performance	07
Gridtite GP	08
Thermal Performance	10
Wind Loads	12
Quality and Reliability	13

Gridtite®.

For all new build and refurbishment applications Gridtite is a long established, class leading spacer system with a proven track record. Tested extensively by independent laboratories and supported by a full technical package. Gridtite is ideal for roofing and wall cladding where the spacer system runs horizontally* across the wall or roof, supporting 'top to bottom' sheeting.

Gridtite is a lightweight bar and bracket system that is designed to provide a controlled space between the inner and outer metal sheets that make up "twin skin" site assembled roofing and walling systems. Insulation goes into this space – usually either a glass fibre or rock fibre quilt.

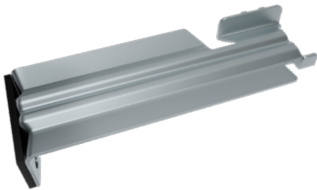
Gridtite is easy to install, strong and stable when sheeted over; is durable and easy to relocate or alter if the need arises. It is easy for self-drilling fasteners to drill into, but provides good fastener grip to resist pull-out loads. Gridtite has very little effect on the thermal performance of the insulation, which assists the building in complying with Part L of the building regulations. COSHH and product data sheets are available for downloading from our website at fixingpoint.com



*for wall sheeting that runs horizontally,
use Gridtite GP.

Gridtite®.

Bracket



Manufactured from 1.55mm high tensile galvanised steel to BS EN 10346-S390+Z275 incorporating stiffening ribs and vapour seal pad/thermal insulator.

Heights available 60–220mm generally in 10mm increments. Other heights can be produced by arrangement.

Brackets are boxed in varying quantities depending upon size; every box features simple, pictorial fitting instructions.

Bar



Manufactured from 1.25mm high tensile hot-dip galvanised steel to BS EN – 10346-S390GD+Z275 incorporating a 40mm spigot end for easy on-site connection to form a continuous level support.

Corrugations along its length give strength, stiffness and optimum screw pull out performance.

Lengths 1, 2, 3 & 3.6m (effective cover).
Bar weight = 1kg/m.

The bar length we quote is the finished 'fitted' length and ignores the 40mm joint. A pre-punched hole in both ends allows accurate alignment and, by inserting a fastener, a means to lock the lengths together in a more positive manner than a punched tab.

Ultra Bracket



Due to thermal performance requirements, the depth of insulation specified has increased over the years. With this in mind Fixing Point have designed and developed our new Ultra Bracket.

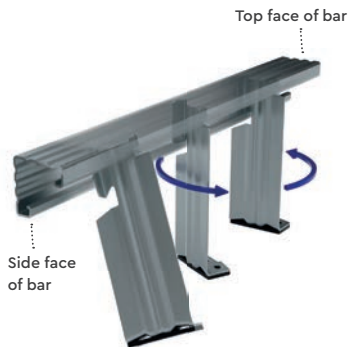
The improved design adds strength & stability to the bracket which allows for depths of up to 400mm without the need for additional support brackets.

Manufactured from 1.55mm high tensile galvanised steel to BS EN 10346-S450+Z275.

Heights available: 140 – 400mm generally in 10mm increments.

Brackets are boxed in varying quantities depending upon size; every box features simple, pictorial fitting instructions.

Fitting the Bracket.



- The head of the bracket has a large hook and a small hook to fit into the bar.
- There's an EPDM pad on the base to limit thermal conduction and assist in sealing against air leakage.
- There are three fixing holes in the base, at least two fixings MUST be used in the base of every standard bracket & three in the Ultra Bracket.
- When bars are fitted on a slope the side face of the bar should always be facing up the slope.

Process



- Hold the bar and bracket as shown.
- Slip the big hook into the bottom channel of the bar.
- Keep the side of the hook flat against the inside of the bar.



- Twist the bracket away from you so that the small hook starts to slide under the edge of the bar.
- You'll find that this is easier if you keep the top corner of the big hook up against the bar.



- Turn and twist the bracket base away from you so that the small hook slides in under the bar.
- Push the base of the bracket away from you to swivel it into the bar.



- With a slight push on the base, you'll feel a distinct click as the bracket slots in.
- This is the start of the locking mechanism.

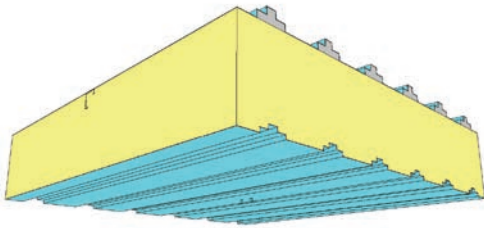


- To lock the bracket firmly in place, give a final twist to bring the bracket round.
- There's a second click as the bracket sets in place, square to the bar.

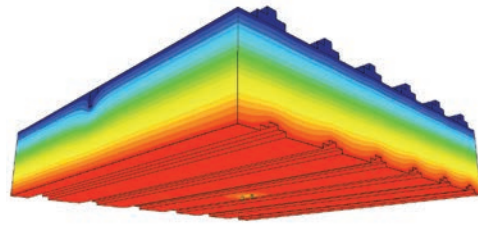
With a little practice Gridtite is quick and easy to assemble.

Thermal Performance.

Typical Thermal Model Showing Materials



Typical Thermal Model Showing Temperatures



Built Up Walling Systems

Gridtite Height & Nominal Quilt Depth (mm)	Insulation Thermal Conductivity W/mK	U values in W/m ² K at rail centres (m)					
		1.0	1.2	1.4	1.6	1.8	2.0
120	0.040	0.38	0.37	0.37	0.36	0.36	0.36
	0.037	0.35	0.35	0.34	0.34	0.34	0.34
	0.035	0.34	0.33	0.33	0.32	0.32	0.32
	0.032	0.31	0.31	0.30	0.30	0.30	0.30
140	0.040	0.33	0.32	0.32	0.31	0.31	0.31
	0.037	0.31	0.30	0.30	0.29	0.29	0.29
	0.035	0.29	0.29	0.28	0.28	0.28	0.28
	0.032	0.27	0.27	0.26	0.26	0.26	0.26
160	0.040	0.29	0.28	0.28	0.28	0.28	0.27
	0.037	0.27	0.26	0.26	0.26	0.26	0.26
	0.035	0.26	0.25	0.25	0.25	0.25	0.24
	0.032	0.24	0.23	0.23	0.23	0.23	0.23
180	0.040	0.26	0.25	0.25	0.25	0.25	0.25
	0.037	0.24	0.24	0.23	0.23	0.23	0.23
	0.035	0.23	0.23	0.22	0.22	0.22	0.22
	0.032	0.21	0.21	0.21	0.21	0.20	0.20
200	0.040	0.23	0.23	0.23	0.23	0.22	0.22
	0.037	0.22	0.22	0.21	0.21	0.21	0.21
	0.035	0.21	0.21	0.20	0.20	0.20	0.20
	0.032	0.20	0.19	0.19	0.19	0.19	0.18

Built Up Walling Systems

Gridtite Height & Nominal Quilt Depth (mm)	Insulation Thermal Conductivity W/mK	U values in W/m ² K at rail centres (m)					
		1.0	1.2	1.4	1.6	1.8	2.0
160	0.040	0.28	0.28	0.27	0.36	0.27	0.27
	0.037	0.26	0.26	0.26	0.25	0.25	0.25
	0.035	0.25	0.25	0.24	0.24	0.24	0.24
	0.032	0.23	0.23	0.22	0.22	0.22	0.22
180	0.040	0.25	0.25	0.24	0.24	0.24	0.24
	0.037	0.23	0.23	0.23	0.22	0.22	0.22
	0.035	0.22	0.22	0.22	0.21	0.21	0.21
	0.032	0.21	0.21	0.20	0.20	0.20	0.19
200	0.040	0.23	0.23	0.22	0.22	0.22	0.21
	0.037	0.21	0.21	0.20	0.20	0.20	0.20
	0.035	0.20	0.20	0.19	0.19	0.19	0.19
	0.032	0.19	0.19	0.18	0.18	0.18	0.17
220	0.040	0.21	0.21	0.20	0.20	0.20	0.19
	0.037	0.19	0.19	0.19	0.18	0.18	0.18
	0.035	0.18	0.18	0.18	0.17	0.17	0.17
	0.032	0.17	0.17	0.16	0.16	0.16	0.16
250	0.040	0.18	0.18	0.18	0.17	0.17	0.17
	0.037	0.17	0.17	0.16	0.16	0.16	0.16
	0.035	0.16	0.16	0.16	0.15	0.15	0.15
	0.032	0.15	0.15	0.14	0.14	0.14	0.14

Structural Performance.

In almost every situation the spanning limitation of the Gridtite system will be determined by wind suction loads. The table below shows the load that the system can safely accept for a range of support centres, purlins or sheeting rails, and different centres of Gridtite brackets along the bar. This table has taken into account the performance of the screws attaching the brackets to the structure, using 2 Drilltite screws into a 1.6mm rail. Fixings other than this may affect the figures.

The figures are all safe working loads, meaning that ultimate figures have been reduced by the appropriate factor of safety to reach these values.

Load Systems

Bracket Centres (mm)	Safe Working Wind Loads KN/m ² at rail centres (m)															
	1.0	1.1	1.2	1.3	1.4	1.5	1.6	1.7	1.8	1.9	2.0	2.1	2.2	2.3	2.4	2.5
0.50	6.00	5.45	5.00	4.62	4.29	4.00	3.75	3.53	3.33	3.16	3.00	2.86	2.73	2.61	2.50	2.40
0.60	5.00	4.55	4.17	3.85	3.57	3.33	3.13	2.94	2.78	2.63	2.50	2.38	2.27	2.17	2.08	2.00
0.70	4.29	3.90	3.57	3.30	3.06	2.86	2.68	2.52	2.38	2.26	2.14	2.04	1.95	1.86	1.79	1.71
0.80	3.75	3.41	3.13	2.88	2.68	2.50	2.34	2.21	2.08	1.97	1.88	1.79	1.70	1.63	1.56	1.50
0.90	3.33	3.03	2.78	2.56	2.38	2.22	2.08	1.96	1.85	1.75	1.67	1.59	1.52	1.45	1.39	1.33
1.00	3.00	2.73	2.50	2.31	2.14	2.00	1.88	1.76	1.67	1.58	1.50	1.43	1.36	1.30	1.25	1.20

Fire Wall

For external walls sited at least 1m from the relevant boundary, Gridtite has a proven, Warrington Fire Research tested layout that will achieve 15 minutes insulation and 4 hours integrity in accordance with the procedure laid out in BS 476 – 22.

Basic requirements for the construction to act as a fire wall with the Gridtite spacer system are:

- Vertical trapezoidal steel liner 0.4mm minimum gauge – Stitched at 300mm max centres with steel fixings.
Main fixings 5.5mm dia self drilling screws at 400mm max centres.
- Insulation minimum 80mm of either glass mineral fibre or Rockwool clamped between Gridtite bar and external sheet.
- Gridtite brackets at least 45mm greater in depth than the glass wool or 20mm greater than the Rockwool.
- Vertical trapezoidal steel external sheet 0.55mm minimum gauge – Stitched at 300mm max centres with steel fixings.

Main fixings 5.5mm dia self drilling screws at 400mm max centres.

Gridtite GP.

Gridtite GP is a lightweight bar and bracket system that is truly General Purpose. It is designed to provide a controlled space between the inner and outer metal sheets that make up "twin skin" site assembled roofing and walling systems.



GP is easy to install, strong and stable when sheeted over; is durable and easy to relocate or alter if the need arises. It is easy for self-drilling fasteners to drill into, but provides good fastener grip to resist pull-out loads.

GP has little effect on the thermal performance of the insulation, which assists the building in complying with Part L of the building regulations. Gridtite GP and Gridtite GT have been approved for use in firewall applications.

A multi-purpose rail and bracket system designed for high load applications such as horizontal wall cladding, extra wide roof light spans and flat to pitch conversions.

Please enquire for a copy of our fire assessment report.

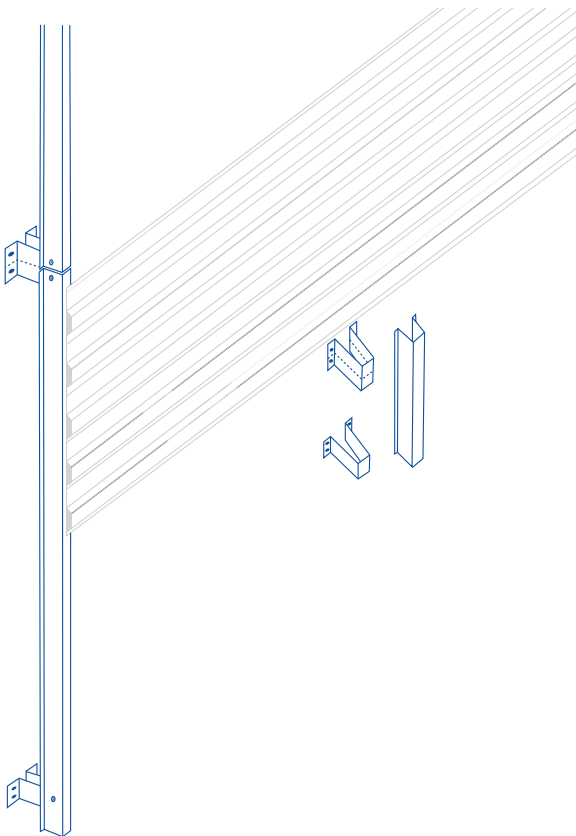
GP Brackets should be fitted over the crown of the liner panel and not in the valley.

Benefits

- User friendly high strength design.
- Resolves horizontal cladding issues.
- Suits most profile-insulation-liner combinations.
- Secure fixing detail.
- Minimum components.
- Suits any cladding rail spacing.
- GP rails up to 4m long.
- Range of bracket sizes to suit most U values.
- Limited cold bridging.
- Non-combustible.
- Compliments Gridtite GT system.
- Brackets can be either pre-assembled into the bars, or attached to the structure individually – it's your choice. Pre-assembly removes the risk of misalignment of fixed brackets.
- No loose spigot sections are required. Simply butt bar sections up to each other on the appropriate brackets.
- Brackets are solid and do not hinge
- Simple, single layer of quilt insulation is used, no confusion problems with two different quilt depths.
- Line out the walls in the conventional manner.
- If a fire wall is required fit Fire Insulations Hangers when installing the liner fixings. These can also be used instead of stick pins on a non fire wall if preferred.
- Fix the assembled GP system to the sheeting rails.
- Push the quilt over the hangers.
- Install the outer sheet.

Gridtite GP.

Gridtite GP Bar



Bar

Manufactured from 1.25mm high tensile hot-dip galvanised steel to BS EN 10345-S390GD+Z275.

The 40mm deep bar section is available in 3, 3.6 & 4m lengths. For ease of handling we recommend that double spans are used giving 3.6m lengths with horizontal rails at 1.8m centres.

The lengths of bar can be joined mid span by butting end to end over a splice joint or at a bracket location by using the wider butt bracket.

Two screws are recommended through the side of both sides of the bar into each bracket.

Bracket

Manufactured from 1.25mm galvanised steel incorporating a vapour seal pad / thermal insulator.

Heights available 100 – 260mm generally in 10mm increments. Other heights can be produced by arrangement.

Brackets are supplied in two widths:

Standard brackets: 50mm wide – for intermediate positions or at the end of a run.

Butt brackets: 100mm wide – where two lengths of bar butt against each other.

Assembly

GP is easy to assemble, brackets can either be fixed to the structure first and then the bar attached, or the two components can be assembled first and then secured to the structure.

All fixing is achieved using Drilltite self drilling and tapping screws.

Thermal Performance.

Fixing Point have carried out thorough thermal modelling of systems using the Gridtite GP spacer, with a variety of insulation types, insulation depths and centres of components. When using GP bar with composite panels there is no effect upon the U value and the supplier of the panels should be contacted in this case.

Horizontal Cladding

The tables below show U values achievable using Gridtite GP and quilt insulation, either rock fibre or glass fibre, with thermal conductivity of 0.040 W/mK. U values for other grades of quilt are available from Fixing Point.

These figures are appropriate for any external profile as its shape has virtually no effect upon the thermal performance of the system. The liner protrudes into the insulation zone however and therefore must be considered. The modelling for these tables was carried out using a 19mm liner with 167mm pitch, other liner shapes will change the U values slightly.

Gridtite GP Spacer

U Values W/m2K using 140mm of 0.040 quilt

Centres of support rails (mm)	Centres of GP Bars (mm)					
	1000	1200	1400	1600	1800	2000
1200	0.35	0.34	0.33	0.32	0.32	0.32
1400	0.34	0.33	0.33	0.32	0.32	0.31
1600	0.34	0.33	0.32	0.32	0.31	0.31
1800	0.33	0.32	0.32	0.31	0.31	0.31
2000	0.33	0.32	0.32	0.31	0.31	0.30

U Values W/m2K using 160mm of 0.040 quilt

Centres of support rails (mm)	Centres of GP Bars (mm)					
	1000	1200	1400	1600	1800	2000
1200	0.31	0.30	0.29	0.28	0.28	0.28
1400	0.30	0.29	0.29	0.28	0.28	0.27
1600	0.29	0.29	0.28	0.28	0.27	0.27
1800	0.29	0.28	0.28	0.28	0.27	0.27
2000	0.28	0.28	0.28	0.27	0.27	0.27

U Values W/m2K using 180mm of 0.040 quilt

Centres of support rails (mm)	Centres of GP Bars (mm)					
	1000	1200	1400	1600	1800	2000
1200	0.27	0.27	0.26	0.25	0.25	0.25
1400	0.27	0.26	0.25	0.25	0.25	0.24
1600	0.26	0.26	0.25	0.25	0.24	0.24
1800	0.26	0.25	0.25	0.25	0.24	0.24
2000	0.26	0.25	0.25	0.24	0.24	0.24

Horizontal Cladding.

U Values W/m²K using 200mm of 0.040 quilt

Centres of support rails (mm)	Centres of GP Bars (mm)					
	1000	1200	1400	1600	1800	2000
1200	0.25	0.24	0.23	0.23	0.23	0.22
1400	0.24	0.23	0.23	0.23	0.22	0.22
1600	0.24	0.23	0.23	0.22	0.22	0.22
1800	0.23	0.23	0.22	0.22	0.22	0.22
2000	0.23	0.23	0.22	0.22	0.22	0.21

U Values W/m²K using 220mm of 0.040 quilt

Centres of support rails (mm)	Centres of GP Bars (mm)					
	1000	1200	1400	1600	1800	2000
1200	0.24	0.23	0.22	1.22	0.21	0.21
1400	0.23	0.22	0.22	0.21	0.21	0.21
1600	0.22	0.22	0.21	0.21	0.21	0.20
1800	0.22	0.21	0.21	0.21	0.20	0.20
2000	0.22	0.21	0.21	0.20	0.20	0.20

U Values W/m²K using 240mm of 0.040 quilt

Centres of support rails (mm)	Centres of GP Bars (mm)					
	1000	1200	1400	1600	1800	2000
1200	0.22	0.21	0.20	0.20	0.20	0.19
1400	0.21	0.20	0.20	0.20	0.19	0.19
1600	0.21	0.20	0.20	0.19	0.19	0.19
1800	0.20	0.20	0.19	0.19	0.19	0.19
2000	0.20	0.20	0.19	0.19	0.19	0.19

U Values W/m²K using 260mm of 0.040 quilt

Centres of support rails (mm)	Centres of GP Bars (mm)					
	1000	1200	1400	1600	1800	2000
1200	0.20	0.19	0.19	0.19	0.18	0.18
1400	0.20	0.19	0.19	0.18	0.18	0.18
1600	0.19	0.19	0.18	0.18	0.18	0.18
1800	0.19	0.18	0.18	0.18	0.18	0.17
2000	0.19	0.18	0.18	0.18	0.17	0.17

Wind Loads.

For all of the various uses of the GP system, the limiting factor will be the wind load. Positive or negative when considering wall cladding or almost certainly negative/suction when used on roof decking.

The tables here show the capability of the system to accept wind suction and wind pressure loads at various combinations of GP bar centres and GP bracket (which will also be support rail) centres.

Wind Suction Loads for GP40 Bar – KN/m²

Centres of support rails (Brkts mm)	Centres of GP Bars (mm)					
	1000	1200	1400	1600	1800	2000
1000	5.40	4.50	3.86	3.38	3.00	2.70
1200	4.07	3.39	2.91	2.54	2.26	2.03
1400	4.07	3.39	2.91	2.54	2.26	2.03
1600	2.99	2.49	2.13	1.87	1.66	1.49
1800	1.73	1.44	1.23	1.08	0.96	0.86
2000	1.26	1.05	0.90	0.79	0.70	0.63

Wind Pressure Loads for GP40 Bar – KN/m²

Centres of support rails (Brkts mm)	Centres of GP Bars (mm)					
	1000	1200	1400	1600	1800	2000
1000	5.86	4.88	4.18	3.66	3.25	2.93
1200	4.07	3.39	2.91	2.54	2.26	2.03
1400	2.99	2.49	2.13	1.87	1.66	1.49
1600	2.29	1.91	1.63	1.43	1.27	1.14
1800	1.73	1.44	1.23	1.08	0.96	0.86
2000	1.26	1.05	0.90	0.79	0.70	0.63

Notes:

1. Minimum thickness of cladding rails 1.6mm
2. Deflection limit of GP40 L/175
3. Load Factor 1.4

Thermal and structural values will vary with the application. Consult our technical department for more information.

Quality and Reliability.

Fixing Point is an active member of the Metal Cladding and Roofing Manufacturers Association (MCRMA). MCRMA promotes best practice within the industry and has a wealth of technical and regulatory data that is accessible to members and end users via the MCRMA website.

The Company is certified to operate a **BS EN ISO 9001:2015** Quality Assurance scheme to ensure that every item sold meets our high product performance specifications.

Manufacturing facilities include nylon injection moulding plant, product assembly, roll forming of spacer grid bars, powder coating and paint spraying.

Our long established quality control laboratory at our head office tests products for their corrosion resistance, drilling ability, mechanical strength and dimensional accuracy to ensure that our Quality Assurance standards are maintained.

We enjoy long standing partnering arrangements with our key suppliers to maintain consistency and reliability; we do not readily switch sources of supply.

Fixing Point has a policy of continuous improvement and reserves the right to withdraw or replace items from time to time without notice.

© May 2018
Issue No.





Sealant Products

Contents.

Find what you need quickly...

Fixing Point Branded Sealants	03
Silicone	04
Fire Rated Silicone	05
Polyurethane Sealants	06
Polymer Based Sealants	07
Butyl Tape	10
Tape	11
Paraphalt	13
Cleaning Products	14
Repair Products	15
Fillers	16

Fixing Point Branded Sealants.

Gun Grade Butyl



Application

- Provides a durable air and waterproof seal between overlapping sheets.
- Sealing foam fillers.
- General bedding.
- High performance.

Product Code	Size	Description	Box Quantity
FPHPBUTYLGREY	310ml	Grey Gun Grade Butyl	25
FPHPBUTYLBLACK	310ml	Black Gun Grade Butyl	25
FPHPBUTYLWHITE	310ml	White Gun Grade Butyl	25

Fire Rated Acrylic Sealant



Application

- To seal low movement joints where fire rating is required.
- Ideal for sealing irregular or uneven gaps around service penetrations, door casing and sills.
- Sealing fire protection boards and partitioning.
- 4 hour fire rated.

Product Code	Size	Description	Box Quantity
INTUMESCENT FIREGRADEACRY	310ml	Fire Rated Acrylic Sealant	25

Silicone.

Parasilico AM 85



Application

- Weatherseal with an adhesive strength without primer on the majority of materials used in the building industry.

Product Code	Size	Description	Box Quantity
SILICONELOW CLEAR	310ml	Clear Silicone Low Modulus	25
SILICONELOW WHITE	310ml	White Silicone Low Modulus	25
SILICONELOW BLACK	310ml	Black Silicone Low Modulus	25
SILICONELOW GOOSEWING	310ml	Goosewing Silicone Low Modulus	25
SILICONELOW ALUMINIUM	310ml	Aluminium Silicone Low Modulus	25
SILICONELOW GREY	310ml	Grey Silicone Low Modulus	25
SILICONELOW BROWN	310ml	Brown Silicone Low Modulus	25
SILICONELOW GREEN	310ml	Green Silicone Low Modulus	25
SILICONELOW ANTHRACITE	310ml	Anthracite Silicone Low Modulus	25

Other colours available, please consult a member of our sales team.

Dow Corning 791



Application

- For weathersealing of curtain walling, building facades and expansion joints. Also suitable for use as a frame sealant.

Product Code	Size	Description	Box Quantity
DOWCORNING791 BLACK	310ml	Dow Corning 791 Black Silicone	12
DOWCORNING791 WHITE	310ml	Dow Corning 791 White Silicone	12
DOWCORNING791 ANTHRACITE	310ml	Dow Corning 791 Anthracite Silicone	12
DOWCORNING791 CLEAR	310ml	Dow Corning 791T Clear Silicone	12
DOWCORNING791 STONE	310ml	Dow Corning 791 Stone Silicone	12

Dow Corning C60



Application

- It has excellent adhesion to a range of porous and non-porous substrates including PVC-U, glass, anodized and painted aluminum, metal cladding, brickwork, painted and un-painted wood.

Product Code	Size	Description	Box Quantity
DOWCORNINGC60 CLEAR	380ml	Dow Corning C60 Silicone Clear	20
DOWCORNINGC60 MANGOLIA	380ml	Dow Corning C60 Silicone Mangolia	20
DOWCORNINGC60 WHITE	380ml	Dow Corning C60 Silicone White	20

Fire Rated Silicone.

Dow Corning 700



Application

- For sealing of expansion joints and pipe and cable penetrations in fire rated structures.

Product Code	Size	Description	Box Quantity
DOWCORNING700 FIRESTOP	380ml	Dow Corning 700 Fire Rated Silicone	12

Soudal Fire Rated Silicone B1 FR



Application

- Fire retardant expansion and connection joints in the construction industry.

Product Code	Size	Description	Box Quantity
SOUDALFIRESILICONE B1WHITE	310ml	Soudal Fire Rated Silicone B1 FR	15

PU Foams.

Expanding Foam



Application

- Filling, sealing and insulating of joints between walls and ceilings, around window and door frames, between prefabricated construction elements and around cables and pipes.

Product Code	Size	Description	Box Quantity
EXPFOAM	750ml	Expanding Foam Hand Applied	12

Fire Retardant Foam



Application

- All applications where fire retardant characteristics are required such as:
- Sealing of all openings in roof construction.
 - Sealing of cable and pipe penetrations.
 - Bonding of insulation materials.
 - Improving thermal insulation in cold store areas.

Product Code	Size	Description	Box Quantity
FIREFOAM	750ml	Fire Retardant Foam Hand Applied	12
FIREFOAMGUN	750ml	Fire Retardant Foam Gun Applied	12

Polyurethane Sealants.

Soudaflex 40 FC



Application

- All sealing and bonding applications in the building industry.
- Structural bondings in vibrating constructions.
- Sealing of shrinking joints in concrete floors.

Product Code	Size	Description	Box Quantity
SODAFLEX40 GREY	310ml	Soudaflex 40 FC Grey	12
SODAFLEX40 WHITE	310ml	Soudaflex 40 FC White	12
SODAFLEX40 BLACK	310ml	Soudaflex 40 FC Black	12

Detaflex 4000 Polyurethane



Application

- Is suited for all elastic joints and construction joints in the building industry.
- Has an excellent adhesion to most materials such as wood, concrete and metals.

Product Code	Size	Description	Box Quantity
DETAFLEX4000 GREY	310ml	Detaflex 4000 Polyurethane Grey	25
DETAFLEX4000 BLACK	310ml	Detaflex 4000 Polyurethane Black	25

Dow Insta-Stick Multi Purpose Adhesive



Application

- Quick and easy to use it is ideal for fixing plasterboard, insulation board and most common building substrates.

Product Code	Size	Description	Box Quantity
DOWINSTA-STIK	750ml	Dow Insta-Stick Multi Purpose Adhesive	12

Polymer Based Sealants.

Geocel 945 High Mod MS Polymer



Application

For sealing movement joints to:

- Building sub structures.
- Expansion joints in water retaining structures.

Product Code	Size	Description	Box Quantity
GEOCEL945BLACK	290ml	Geocel 945 High Mod MS Polymer Black	12
GEOCEL945GREY	290ml	Geocel 945 High Mod MS Polymer Grey	12
GEOCEL945WHITE	290ml	Geocel 945 High Mod MS Polymer White	12

Geocel 925 Joint Sealant



Application

For sealing joints to building facades where:

- High movement is anticipated.
- Non staining is a requirement.
- Prestige finish is important.
- Extreme weather conditions are expected.

Product Code	Size	Description	Box Quantity
GEOCEL925BUFF	380ml	GEOCEL 925 BUFF	20

Geocel 201 Polysulphide



Application

- Ideal for sealing against pre-cast facing and cladding panels, wall tiles, granite, metal or timber window frames, masonry and certain glazing systems.

Product Code	Size	Description	Box Quantity
GEOCEL201BLACK	380ml	Geocel 201 Polysulphide Black	12

Geobond Marine Hybrid Polymer Sealant



Application

- Above and below waterline bonding.
 - GRP superstructure bonding.
 - Bonding components to GRP deck.
 - Creating watertight bonded joints throughout
- It can also be used for internal bonding and sealing solutions.

Product Code	Size	Description	Box Quantity
GEOBOND MARINE	290ml	Geobond Marine Hybrid Polymer Sealant White	12

Polymer Based Sealants.

Geocel Trade Mate Roofers Seal



Application

- Can be used for most roofing applications and repairs.
- It will adhere to various roofing substrates including lead, bitumen and galvanised steel.
- Ideal for sealing around gutters, down pipes, lead flashing and corrugated roofing.

Product Code	Size	Description	Box Quantity
TRADEMATEGREY	310ml	Geocel Trade Mate Roofers Seal Grey	12
TRADEMATEBLACK	310ml	Geocel Trade Mate Roofers Seal Black	12

Geocel The Works Multi-Use Sealant & Adhesive



Application

- Multi-use.
- Will work on any surface.

Product Code	Size	Description	Box Quantity
THEWORKS	290ml	The Works Multi-Use Sealant & Adhesive	6

Soudal Fix All Hybrid Polymer



Application

- All common bonding and sealing applications, both in and outdoor.

Product Code	Size	Description	Box Quantity
SODALFIXALL CRYSTAL	290ml	Soudal Fix All Crystal Clear Hybrid Polymer	12

Polymer Based Sealants.

Parabond Construction Hybrid Polymer



Application

- Bonds without primer on almost all materials used in the construction industry.
- For interior and exterior use.

Product Code	Size	Description	Box Quantity
PARACONWHITE	290ml	Parabond Construction Hybrid Polymer White	25
PARACONBLACK	290ml	Parabond Construction Hybrid Polymer Black	25

Parabond Fast Hybrid Polymer



Application

- Bonds without primer on almost all materials used in the construction industry.
- For interior and exterior use.
- The assembled parts can be manipulated relatively fast after gluing.

Product Code	Size	Description	Box Quantity
PARAFASTBLACK	290ml	Parabond Fast Hybrid Polymer Black	12
PARAFASTWHITE	290ml	Parabond Fast Hybrid Polymer White	12

Butyl Tape.

Butyl Strip



Application

- Creates an excellent seal in situations such as side and end lap joints.
- Grey.

Product Code	Description	Box Quantity
BUTYL6X5X9.6	6mm x 5mm x 9.6m Butyl Tape	30
BUTYL6X5X9.6W	6mm x 5mm x 9.6m Butyl Tape (White)	30
BUTYL9X1.5X30	9mm x 1.5mm x 30m Butyl Tape	24
BUTYL9X3X15	9mm x 3mm x 15m Butyl Tape	24
BUTYL12X1X45	12mm x 1mm x 45m Butyl Tape	20
BUTYL12X6X8	12mm x 6mm x 8m Butyl Tape	20
BUTYL18X4X12	18mm x 4mm x 12m Butyl Tape	14
BUTYL19X3X15	19mm x 3mm x 15m Butyl Tape	14
BUTYL50X3X15	50mm x 3mm x 15m Butyl Tape	6
BUTYL50X6X5	50mm x 6mm x 5m Butyl Tape	6

Membrane Tape



Application

- Sealing membranes & vapour barriers.
- Black.

Product Code	Description	Box Quantity
BUTYL15X2X22.5	15mm x 2mm x 22.5m Butyl Tape	20

Butyl Bead



Application

- Particularly recommended for large corrugated end lap sheet profiles.
- Grey.

Product Code	Description	Box Quantity
BEAD3X16	3mm x 16m Butyl Bead Tape	30
BEAD4X12	4mm x 12m Butyl Bead Tape	30
BEAD6X8	6mm x 8m Butyl Bead Tape	24
BEAD8X6	8mm x 6m Butyl Bead Tape	20
BEAD12X4	12mm x 4m Butyl Bead Tape	14

Polytite



Application

- Sealing side laps of liner panels.
- White.

Product Code	Description	Box Quantity
POLYTITE50	50mm x 1mm x 35m Butyl Liner Tape White	6
POLYTITE100	100mm x 1mm x 35m Butyl Liner Tape White	4

Tape.

PVC Tape



Application

- Isolation to prevent bi-metallic reactions for example separating aluminium sheet from a galvanised purlin.

Product Code	Description	Colour
PVC50	PVC Tape 50mm x 33m	Black
PVC75	PVC Tape 75mm x 33m	Black
PVC100	PVC Tape 100mm x 33m	Black

Aluminium Foil Tape



Application

- For sealing profiled sheets and joining foil face insulation boards.

Product Code	Description	Colour
FOIL50	Foil Tape 50mm x 45m	Silver
FOIL75	Foil Tape 75mm x 45m	Silver
FOIL100	Foil Tape 100mm x 45m	Silver

Gaffa Tape



Application

- Bundling.
- Masking/Protection
- Packaging, wrapping and sealing.
- Polyethylene sheet jointing.
- General maintenance.

Product Code	Description	Colour
GAFFA50	Gaffa Tape 50mm x 33m	Black
GAFFA75	Gaffa Tape 75mm x 33m	Black
GAFFA100	Gaffa Tape 100mm x 33m	Black

EPDM Foam Tape



Application

- Air sealing; Barrier tape.
- Anti-Vibration.
- Construction seal.
- Isolating & thermal.

Product Code	Description	Colour
EPDMFOAMTAPE	EPDM Foam Tape	Black

Various sizes available, please consult a member of our sales team.

Tape.

Expanding Foam Tape

**Application**

- Filling irregular gaps between brickwork and timber/steel.
- Air sealing.

Scrim Tape

**Application**

- Membrane bonding.
- Offers good bonding on uneven surfaces.

Product Code	Description	Colour
EXPFOAM	Expanding Foam Tape	Black

Product Code	Description	Colour
SCRIM50	Scrim Tape 50mm x 50m	Clear

Various sizes available, please consult a member of our sales team.

Cold Bridging Tape

**Application**

- Cold bridging.

Product Code	Description	Colour
CB38X4	Cold Bridging Tape 38mm x 4mm x 10m	Black

Paraphalt.

Paraphalt Liquid



Application

- Waterproof coating and renovation of roofs and guttering.

Product Code	Size	Description
PARAPHALT5	5kg	Paraphalt Liquid
PARAPHALT25	25kg	Paraphalt Liquid

Paraphalt Bitumen



Application

- For waterproof repairs on bituminous surfaces.

Product Code	Size	Description
PARAPHALTBITUMEN	310ml	Paraphalt Bitumen

Parabond Flex Seal



Application

- Seamless coating for a wide range of projects and nearly all surfaces.

Product Code	Size	Description
PARABONDFLEXSEAL	1L	Parabond Flex Seal

Paraphalt Primer



Application

- Considerably improves adhesion between the base surface and the material to be applied.

Product Code	Size	Description
PARAPHALTPRIMER	5kg	Paraphalt Primer

Cleaning Products.

Solvent Gun & Foam Cleaner



Application

- Cleans not cured foam.
- Cleans tools such as applicator guns.
- Good degreasing and cleaning properties.

Product Code	Size	Description	Box Quantity
GUNCLEANER	500ml	Solvent Gun & Foam Cleaner	12

Silicone & MS Polymer Remover



Application

- Removal of old silicone residue, spilled silicone or spilled MS polymeres from different kinds of surfaces.
- Removes all residue of spilled silicone.

Product Code	Size	Description	Box Quantity
SEALANTREMOVER	400ml	Silicone & MS Polymer Remover	6

Repair Products.

Touch N Go Paint



Application

- Touching up any small scratches or to cover up cut ends.
- Available in many BS and RAL colours.

Product Code	Size	Description
T/G	250ml	Touch N Go Paint

Touch Up Sealer Paste



Application

- Commonly used in association with coated metal fabrications such as fascias and wall claddings to provide weathertight seals between panels or to be used as a filler.

Product Code	Size	Description
SEALPASTE	132g	Touch Up Sealer Paste

Aerosol Spray Paint



Application

- Small scale cladding repairs.
- Available in many BS and RAL colours.

Product Code	Size	Description
AEROSOLSPRAY	400ml	Aerosol Spray Paint

Aerosol Primer



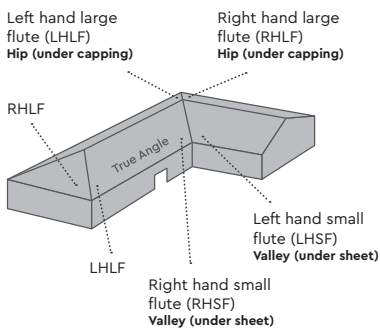
Application

- Used to leave a good smooth surface before spraying paint.

Product Code	Size	Description
PRIMERAEROSOL	500ml	Aerosol Primer

Fillers.

Fillers are made to order so please state the profile and manufacturers names to be sure the correct filler is produced.



Courtesy of Brett Martin.

Flute

There are 3 options when specifying which flute you require – small, large and pairs.

- Small is usually used under the sheet at the eaves.
- Large is usually used at the top of the sheet at the ridge.
- Pairs will be both the small and large flute.

Material

Fillers are available in a standard polyethylene or higher density EPDM 'Supaseal' material.

Self-adhesive fillers

Can be supplied with butyl tape applied to the base, profile or both.

Base depth

If not specified otherwise, fillers will be manufactured with a 6mm base. Extended bases are available on request.

Ventilated fillers

A variety of venting options to allow air flow including trimmed profile, ventilation channels, mesh inserts and ferrule vents.

Angle cut fillers

Fillers to be fitted along roof hips and valleys must be cut to the angle formed by the flashing or valley and short dimensions of the profiled sheet. It must also be determined if the filler is left or right handed.

Application

Seals the eaves and ridges against bird & insect ingress.

Product Code	Colour	Description	Quantity
FILLPOL	Black, White or Both	Polyethylene Profiled Foam Fillers	Each
FILLSUP	Black or White	Supaseal Profiled Foam Fillers Higher density than standard PEL	Each



Tools and Accessories

Contents.

Find what you need quickly...

Power Tools	03
Drive Bits and Sockets	05
Metal Drill Bits	07
Masonry Drill Bits	10
Fein Nibbler Accessories	11
Holesaws and Arbours	12
Jigsaw & Recip Blades	14
Saw Blades	17
Hand Tools	19
PPE	21
Site Accessories	23
Electrical Equipment	24

Power Tools.

Hitachi Screw Driver



Features

- 620 Watt; No load speed: 0 – 1700rpm.

Product Code	Description
HITACHISCREWDRIVER	HITACHI W8VB2 110v TEK Screwdriver

Evolution Circular Saw



Features

- Industrial quality, Virtually no sparks, 0–45° bevel tilt enhances the versatility of the saw. Cut Steel, Stainless Steel, Aluminium and Wood with the optional blades available.

Product Code	Description
EVOSAW230	Evosaw 230 Industrial Circular Saw

Makita 4" Angle Grinder



Features

- Machined bevel gears.
- Small gear housing for easy handling and manoeuvrability.
- Powerful 720W motor with excellent heat-resistance.
- Ergonomic 20 degree side grip angle.

Product Code	Description
MAKITAANGLEGRINDER4	Makita 4" Angle Grinder 110V

Makita 9" Angle Grinder



Features

- Compact and lightweight design.
- Large trigger switch.
- Small gear housing for easy handling and manoeuvrability.
- Double Insulation.

Product Code	Description
MAKITAANGLEGRINDER9	Makita 9" Angle Grinder 110V

Power Tools.

Cordless Drill



Features

- Compact drill driver with XR Li-ion battery technology, designed for efficiency and making applications faster.
- Improved ergonomic design and rubber grip increases user comfort and provides maximum control.

Product Code

DEWALTCORDLESSDRILL

Description

DeWalt 18V Li-ion XR Cordless Combi Drill

Nibblers



Features

- Compact and rapid nibblers for corrugated and trapezoidal sheet metals.

Product Code

FEINNIBBLER1.3CS

FEINNIBBLER1.3T

FEINNIBBLER1.6BLK

Description

Fein Nibbler BLK 1.3CS

Fein Nibbler BLK 1.3T

Fein Nibbler BLK 1.6

Drive Bits and Sockets.

Socket & Bar Combinations



Product Code	Description
HALFENDRIVES/16	5/16 Halfen Socket 11mm OD (reduced)
SOCKET+CLIP5/16	5/16 Socket with Clip for Stainless

Socket & Bar Combinations



Product Code	Description
CTSOCKET+DRIVE BAR	Colortite Socket & Drive Bar Combination
SOCKET+BAR5/16	5/16 Socket & Bar 152mm

Sockets



Product Code	Description
SOCKET5/16	5/16 Socket
SOCKET1X200	11mmx200mm Bi Hex Drive Socket
EXT250	5/16 Extension Bar 250mm long
SOCKETHEAD5/16	5/16 Socket Head for EXT BAR

Magnetic Drive Bars



Product Code	Description
MAG1/4	1/4 Magnetic Bit Holder
MA152	MA152 Magnetic Extension Bar 6
MA279	MA279 Magnetic Extension Bar 279mm

Drive Bits and Sockets.

Torx Drive Bits



Product Code	Description
TX20	T20 × 25mm long TORX Bit
TX25	T25 × 25mm long TORX Bit
TX25X50	T25 × 50mm long TORX Bit
TX25X150	T25 × 150mm long TORX Bit
TX25X250	T25 × 250mm long TORX Bit
TX25X300	T25 × 300mm long TORX Bit
TX30	T30 × 25mm long TORX Bit
TX40	T40 × 25mm long TORX Bit
TX40X89	T40 × 89mm long TORX Bit

Phillips Drive Bits



Product Code	Description
PH2	Phillips Bit No.2 25mm long
PH2X	Phillips Bit No.2 25mm long extra hard
PH2XR	Phillips Bit No.2 25mm long extra hard reduced point
PH2X150	Phillips Bit No.2 150mm long
PH2X250	Phillips Bit No.2 250mm long
PH2X300	Phillips Bit No.2 300mm long
PH3	Phillips Bit No.3 25mm long
PH3X	Phillips Bit No.3 25mm long extra hard

Pozi Drive Bits



Product Code	Description
PZ2	Pozi No.2 Bit 25mm long
PZ2X	Pozi No.2 Bit 25mm long extra hard
PZ2X50	Pozi No.2 Bit 50mm long
PZ2X152	Pozi No.2 Bit 152mm long
PZ3	Pozi No.3 Bit 25mm long
PZ3X	Pozi No.3 Bit 25mm long extra hard
PZ3X50	Pozi No.3 Bit 50mm long
PZ4	Pozi No.4 Bit 25mm long

Metal Drill Bits.

HSS Split Point Jobbers

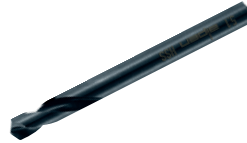


Features

- Premium quality twist drill for drilling steel and steel castings, alloy, plain carbon and similar materials.

Product Code	Diameter	Overall Length	Working Length
S/PJOBBER4.9X86	4.9mm	86mm	52mm
S/PJOBBER5.1X86	5.1mm	86mm	52mm
S/PJOBBER5.3X86	5.3mm	86mm	52mm
S/PJOBBER5.8X93	5.8mm	93mm	57mm

HSS Split Point Stub



Features

- Premium quality twist drill for drilling steel and steel castings, alloy, plain carbon and similar materials.

Product Code	Diameter	Overall Length	Working Length
S/PSTUB4.9X62	4.9mm	62mm	17mm
S/PSTUB5.1X62	5.1mm	62mm	17mm
S/PSTUB5.3X62	5.3mm	62mm	17mm
S/PSTUB5.8X66	5.8mm	66mm	20mm

HSS Split Point Long Series



Features

- Premium quality twist drill for drilling steel and steel castings, alloy, plain carbon and similar materials.

Product Code	Diameter	Overall Length	Working Length
S/PLONGSERIES4.9X132	4.9mm	132mm	87mm
S/PLONGSERIES5.1X132	5.1mm	132mm	87mm
S/PLONGSERIES5.3X132	5.3mm	132mm	87mm
S/PLONGSERIES5.8X139	5.8mm	139mm	91mm

HSS Split Point Extra Long Series



Features

- Premium quality twist drill for drilling steel and steel castings, alloy, plain carbon and similar materials.

Product Code	Diameter	Overall Length	Working Length
S/PXLONGSERIES 4.9X195	4.9mm	195mm	135mm
S/PXLONGSERIES 5.5X205	5.5mm	205mm	140mm
S/PXLONGSERIES 5.8X205	5.8mm	205mm	140mm

Metal Drill Bits.

HSS Jobbers



Features

- HSS Twist drill; Toughness and precision for drilling alloyed carbon and plain steel.

Product Code	Diameter	Overall Length	Working Length
JOBBER2.5X57	2.5mm	57mm	33mm
JOBBER3.0X61	3.0mm	61mm	36mm
JOBBER3.3X65	3.3mm	65mm	39mm
JOBBER3.5X70	3.5mm	70mm	39mm
JOBBER4.0X75	4.0mm	75mm	43mm
JOBBER4.1X75	4.1mm	75mm	47mm
JOBBER4.2X75	4.2mm	75mm	47mm
JOBBER4.8X86	4.8mm	86mm	52mm
JOBBER5.0X86	5.0mm	86mm	52mm
JOBBER5.5X93	5.5mm	93mm	57mm
JOBBER5.7X93	5.7mm	93mm	57mm
JOBBER6.0X93	6.0mm	93mm	63mm
JOBBER7.0X109	7.0mm	109mm	69mm
JOBBER8.0X117	8.0mm	117mm	75mm
JOBBER9.0X125	9.0mm	125mm	81mm
JOBBER9.5X125	9.5mm	125mm	81mm
JOBBER10.0X133	10.0mm	133mm	87mm
JOBBER10.5X133	10.5mm	133mm	87mm
JOBBER12.0X151	12.0mm	151mm	101mm
JOBBER13.0X151	13.0mm	151mm	101mm

HSS Stub



Features

- Drill with extremely sturdy construction, particularly suitable for drilling thin metals.

Product Code	Diameter	Overall Length	Working Length
STUB3.3X49	3.3mm	49mm	11mm
STUB4.0X55	4.0mm	55mm	14mm
STUB4.8X62	4.8mm	62mm	17mm
STUB5.6X66	5.6mm	66mm	28mm
STUB7.5X75	7.5mm	75mm	35mm

HSS Long Series



Features

- HSS Twist drill; Toughness and precision for drilling alloyed carbon and plain steel.

Product Code	Diameter	Overall Length	Working Length
LONGSERIES4.0X119	4.0mm	119mm	78mm
LONGSERIES4.5X126	4.5mm	126mm	82mm
LONGSERIES4.8X132	4.8mm	132mm	87mm
LONGSERIES5.0X132	5.0mm	132mm	87mm
LONGSERIES5.8X139	5.8mm	139mm	91mm
LONGSERIES6.0X139	6.0mm	139mm	91mm
LONGSERIES7.0X156	7.0mm	156mm	102mm
LONGSERIES8.0X165	8.0mm	165mm	109mm
LONGSERIES9.0X175	9.0mm	175mm	115mm

Metal Drill Bits.

HSS Cobalt Jobber Drills



Features

- 5% Cobalt-alloyed jobber drills. Especially suitable for high alloyed steels and hot/cold-rolled steel. Ideal for stainless steel.

Product Code	Diameter	Overall Length	Working Length
COBALJOBBER3.5X70	3.5mm	70mm	39mm
COBALJOBBER4.1X75	4.1mm	75mm	43mm
COBALJOBBER4.9X86	4.9mm	86mm	52mm
COBALJOBBER5.0X86	5.0mm	86mm	52mm
COBALJOBBER5.1X86	5.1mm	86mm	52mm
COBALJOBBER5.3X86	5.3mm	86mm	52mm
COBALJOBBER5.5X93	5.5mm	93mm	57mm
COBALJOBBER8.0X117	8.0mm	117mm	75mm
COBALJOBBER10.0X133	10.0mm	133mm	87mm
COBALJOBBER13.0X151	13.0mm	151mm	101mm

HSS Cobalt Long Series Drills



Features

- 5% Cobalt-alloyed long series drills.
- Especially suitable for high alloyed steels and hot/cold-rolled steel.
- Ideal for stainless steel.

Product Code	Diameter	Overall Length	Working Length
COBALLONGSERIES 3.0X100	3.0mm	100mm	66mm
COBALLONGSERIES 3.5X112	3.5mm	112mm	73mm
COBALLONGSERIES 4.0X119	4.0mm	119mm	78mm
COBALLONGSERIES 4.5X126	4.5mm	126mm	82mm
COBALLONGSERIES 4.8X132	4.8mm	132mm	87mm
COBALLONGSERIES 4.9X132	4.9mm	132mm	87mm
COBALLONGSERIES 5.0X132	5.0mm	132mm	87mm
COBALLONGSERIES 5.5X139	5.5mm	139mm	91mm
COBALLONGSERIES 6.0X139	6.0mm	139mm	91mm

HSS Cobalt Stub Drills



Features

- 5% Cobalt-alloyed stub drills. Especially suitable for drilling stainless steel.

Product Code	Diameter	Overall Length	Working Length
COBALSTUB3.3X49	3.3mm	49mm	18mm
COBALSTUB4.0X55	4.0mm	55mm	22mm
COBALSTUB4.9X62	4.9mm	62mm	26mm
COBALSTUB5.1X62	5.1mm	62mm	26mm
COBALSTUB5.3X62	5.3mm	62mm	26mm
COBALSTUB5.8X66	5.8mm	66mm	28mm
COBALSTUB7.0X74	7.0mm	74mm	34mm
COBALSTUB10.0X89	10.0mm	89mm	43mm

Masonry Drill Bits.

SDS Plus Drills



Features

- Low wear, very long service life.
- High Efficiency drill for heavy-duty drilling in concrete, reinforced concrete, natural stone and brickwork.

Product Code	Diameter	Overall Length	Working Length
SDS5.0X110	5.0mm	110mm	50mm
SDS5.0X160	5.0mm	160mm	100mm
SDS5.0X210	5.0mm	210mm	150mm
SDS5.0X260	5.0mm	260mm	200mm
SDS5.5X110	5.5mm	110mm	50mm
SDS5.5X160	5.5mm	160mm	100mm
SDS5.5X210	5.5mm	210mm	150mm
SDS5.5X260	5.5mm	260mm	200mm
SDS5.5X310	5.5mm	310mm	250mm
SDS5.5X450	5.5mm	450mm	400mm
SDS6.0X110	6.0mm	110mm	50mm
SDS6.0X160	6.0mm	160mm	100mm
SDS6.0X210	6.0mm	210mm	150mm
SDS6.0X260	6.0mm	260mm	200mm
SDS6.0X310	6.0mm	310mm	250mm
SDS7.0X110	7.0mm	110mm	50mm
SDS7.0X160	7.0mm	160mm	100mm
SDS7.0X210	7.0mm	210mm	150mm
SDS7.0X260	7.0mm	260mm	200mm
SDS8.0X110	8.0mm	110mm	50mm
SDS8.0X160	8.0mm	160mm	100mm
SDS8.0X210	8.0mm	210mm	150mm
SDS8.0X260	8.0mm	260mm	200mm

Table continued

Product Code	Diameter	Overall Length	Working Length
SDS10.0X110	10.0mm	110mm	50mm
SDS10.0X160	10.0mm	160mm	100mm
SDS10.0X210	10.0mm	210mm	150mm
SDS10.0X260	10.0mm	260mm	200mm
SDS14.0X160	14.0mm	160mm	100mm
SDS14.0X210	14.0mm	210mm	150mm
SDS14.0X260	14.0mm	260mm	200mm
SDS18.0X210	18.0mm	210mm	150mm
SDS18.0X260	18.0mm	260mm	200mm
SDS20.0X210	20.0mm	210mm	150mm
SDS20.0X260	20.0mm	260mm	200mm

Fein Nibbler Accessories.

Replacement Die



Features

- Replacement Die for Fein Nibbler.

Product Code	Description
FEINDIE1.3CS	Fein Nibbler 1.3 Die for Corrugated Sheets
FEINDIE1.3T	Fein Nibbler 1.3 Die for Trapezoidal Sheets
FEINDIE1.6	Fein Nibbler 1.6 Die

Punch & Die Set



Features

- Replacement Punch and Die set for Fein Nibbler.

Product Code	Description
FEINP&DSET1.3	Fein Nibbler 1.3 Punch & Die Set
FEINP&DSET1.6	Fein Nibbler 1.6 Punch & Die Set

Replacement Punch



Features

- Replacement Punch for Fein Nibbler.

Product Code	Description
FEINPUNCH1.3	Fein Nibbler 1.3 Punch CS/T
FEINPUNCH1.6	Fein Nibbler 1.6 Punch

Holesaws and Arbours.

Morse Bi-Metal Holesaws



Features

- Morse Bi-Metal hole saws are a premium line of professional quality hole saws for cutting wood, nail embedded wood, stainless steel, plastic and machinable metal.

Product Code	Diameter
HOLESAW19	19mm
HOLESAW20	20mm
HOLESAW22	22mm
HOLESAW24	24mm
HOLESAW25	25mm
HOLESAW27	27mm
HOLESAW29	29mm
HOLESAW30	30mm
HOLESAW32	32mm
HOLESAW33	33mm
HOLESAW35	35mm
HOLESAW38	38mm
HOLESAW41	41mm
HOLESAW44	44mm
HOLESAW48	48mm
HOLESAW50	50mm
HOLESAW51	51mm
HOLESAW52	52mm
HOLESAW54	54mm
HOLESAW57	57mm

Table continued

Product Code	Diameter
HOLESAW60	60mm
HOLESAW64	64mm
HOLESAW65	65mm
HOLESAW67	67mm
HOLESAW70	70mm
HOLESAW73	73mm
HOLESAW76	76mm
HOLESAW79	79mm
HOLESAW83	83mm
HOLESAW89	89mm
HOLESAW100	100mm
HOLESAW102	102mm
HOLESAW105	105mm
HOLESAW111	111mm
HOLESAW114	114mm
HOLESAW121	121mm
HOLESAW127	127mm
HOLESAW140	140mm
HOLESAW146	146mm
HOLESAW152	152mm

Holesaws and Arbors.

Arbors & Pilot Drills



Features

- Supplied with HSS Pilot Drill.

Product Code	Description	Pack Quantity
ARBOR1/416-30	Morse M24K Hex Arbor to suit sizes 14-30mm 1/4" Round Shank	Each
ARBOR3/816-30	Morse M34 A1 Arbor to suit sizes 14-30mm 3/8" Hex Shank	Each
ARBOR1/216-30	Morse M44 Arbor to suit sizes 14-30mm 7/16" Hex Shank	Each
ARBOR1/2ALL	Morse M44K Arbor suits all sizes 7/16" Hex Shank	Each
ARBOR1/232-152	Morse M45P A2 Arbor to suit sizes 32-152mm 7/16" Quick Release Hex Shank	Each
ARBOR3/432-152	Morse M55P Arbor to suit 32-152mm 5/8" Hex Shank	Each
A1ARBOR	Starrett A1 Arbor to suit 14-30mm Holesaws	Each
A2ARBOR	Starrett A2 Arbor to suit 32-210mm Holesaws	Each
HOLESAPILOTDRILL	Holesaw Pilot Drill for use with Bi-Metal Arbors	Each
TCTPILOTDRILL	Tungsten Carbide Tipped Pilot Drill for A1 & A2 Arbors	Each

Jigsaw & Recip Blades.

Bosch Jigsaw Blades – Basic for Metal



Features

- HSS, Wavy set, Milled, Thin sheet metals (1-3mm).

Product Code	Description	Size
T118A	Thin sheet metals (1-3mm)	92mm
T318A	Thin sheet metals (1-3mm), pipes + profiles including aluminium (diameter <65mm)	132mm

Bosch Jigsaw Blades – Clean for Wood



Features

- Clean cut.

Product Code	Description	Size
T101B	Softwood, chipboard, wood core plywood, fibre boards (3-30mm), plastics/epoxy (diameter <30mm)	74mm

Bosch Jigsaw Blades – Flexible for Metal



Features

- Breakproof and durable.

Product Code	Description	Size
T118EOF	Thin sheet metals (1.5-4mm), especially for curve cuts	83mm

Bosch Jigsaw Blades – Precision for Metal-Sandwich



Features

- Breakproof and durable.

Product Code	Description	Size
T1018AFP	BIM, Wavy set, milled precision for Metal Sandwich materials (<150mm)	250mm

Jigsaw & Recip Blades.

Bosch Jigsaw Blades – Progressor for Metal or Wood



Features

- Fast through thick and thin.

Product Code	Description	Size
T123X	Thin to thick sheet metals (1.5-10mm), pipes + profiles, including aluminium (diameter <30mm)	100mm
T345XF	Construction timber with nails (<65mm), wooden materials, plastics, sheet metals, pipes/profiles, including aluminium (diameter 3-10mm)	132mm

Bosch Jigsaw Blades – Special for Aluminium



Features

- HSS, Side set, milled.

Product Code	Description	Size
T127D	Thin to thick sheet metals (3-15mm), pipes + profiles, (diameter <30mm)	100mm

Bosch Jigsaw Blades – Special for Ceramics



Features

- Ceramic materials.

Product Code	Description	Size
T130RIFF	Soft ceramic wall tiles, glass fibre reinforced plastic, cast iron (5-15mm) coarse cut	83mm

Bosch Jigsaw Blades – Special for Fibre and Plaster



Features

- Fibre and cement materials.

Product Code	Description	Size
T141HM	Glass fibre reinforced plastic (5-20mm), plasterboard, fibre cement boards (5-50mm)	100mm

Jigsaw & Recip Blades.

Bosch Sabre Blades – Flexible for Metal



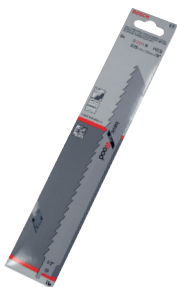
Features

- Flexible, break resistant.

Product Code	Description	Size
S922AF	Thin sheet metals (0.7–3mm), fine pipes/ profiles (diameter <100mm), effortless, fine cut	150mm
S1122AF	Thin sheet metals (0.7–3mm), fine pipes/ profiles (diameter <175mm), effortless, fine cut, flexible flush cut	225mm
S1122BF	Thick sheet metals (3–8mm), solid pipes/ profiles (diameter <175mm), flexible flush cut, quick cut	225mm

Other sizes available.

Bosch Sabre Saw Blades – Basic for Wood



Features

- High quality and cost effective.

Product Code	Description	Size
S1111K	Coarse wood, free of nails (<175mm), firewood (diameter <175mm)	225mm

Bosch Sabre Saw Blades – Flexible for Wood and Metal



Features

- Flexible, break resistant.

Product Code	Description	Size
S1222VF	Wood with nails/metal (<250mm), sheet metals, aluminium profiles (3–10mm), glass fibre reinforced plastic/ epoxy (<250mm), flexible flush cut	300mm

Morse HAVOC Demolition Reciprocating Blade



Features

- Specifically designed for "roughing in" applications on the construction site. This blade will cut through all types of wood, wood composites, metal, and nail embedded wood.

Product Code	Description	Size
RB96210T03	General demolition, wood, nail-embedded wood, roofs, walls, metal studs and wallboard	225mm

Saw Blades.

Freud Pro Ultimax Sawblade



Features

- Suitable for wood, nail embedded wood, plastic, aluminium and mild steel (up to 3mm).

Product Code	Description
ULTIMAXBLADE160X20	Freud Pro Ultimax Sawblade 160mm x 30T Teeth x 20mm bore
ULTIMAXBLADE184X30	Freud Pro Ultimax Sawblade 184mm x 38T Teeth x 30mm bore
ULTIMAXBLADE190X30	Freud Pro Ultimax Sawblade 190mm x 38T Teeth x 30mm bore
ULTIMAXBLADE216X30	Freud Pro Ultimax Sawblade 216mm x 40T Teeth x 30mm bore
ULTIMAXBLADE230X30	Freud Pro Ultimax Sawblade 230mm x 44T Teeth x 30mm bore
ULTIMAXBLADE250X20	Freud Pro Ultimax Sawblade 250mm x 48T Teeth x 20mm bore
ULTIMAXBLADE305X20	Freud Pro Ultimax Sawblade 305mm x 80T Teeth x 20mm bore

Wilco Cutting and Grinding Discs



Features

- Various discs suitable for specific materials.

Product Code	Description
WILCOMETALDISC14	Wilco 350 × 3mm Metal Chopsaw Blade
WILCOMETALDISC4.5	Wilco 115 × 6mm Metal Grinding Disc
WILCOMETALDISC9	Wilco 230 × 6mm Metal Grinding Disc
WILCOSTONEDISC4	Wilco 100 × 3mm Stone Cutting Disc
WILCOSTONEDISC4.5	Wilco 115 × 3mm Stone Cutting Disc
WILCOSTONEDISC9	Wilco 230 × 3mm Stone Cutting Disc
WILCOTHINMETALDISC4.5	Wilco 115 × 1mm Thin Cutting Disc for Stainless Steel
WILCOTHINMETALDISC9	Wilco 230 × 2mm Cutting Disc for Stainless Steel

Bosch Universal Diamond Blades



Features

- Suitable for Brick, Limestone, Mortar Plaster, Pavement Slabs, Porous Concrete, Pumice Stone, Sandstone and Screed Concrete.

Product Code	Description
BOSCHDIAMOND4.5	Bosch 115mm Universal Diamond Blade
BOSCHDIAMOND9	Bosch 230mm Universal Diamond Blade
BOSCHDIAMOND12	Bosch 300mm Universal Diamond Blade

Saw Blades.

Stone Cutting Discs



Features

- Suitable for working on all types of stone and concrete, also non-ferrous metals i.e. cast iron, copper and brass.

Product Code	Description
STONEDISC4	115mm Stone Cutting Disc
STONEDISC9	230mm Stone Cutting Disc

Evolution Aluminium Blades



Features

- Designed specifically to cut Aluminium.
- High grade carbide teeth, offering increased durability.
- Hardened blade body ensures the blade runs truer for longer.

Product Code	Description
EVOALUMINIUMBLADE180	180mm Evolution Aluminium Circular Saw Blade
EVOALUMINIUMBLADE230	230mm Evolution Aluminium Circular Saw Blade
EVOALUMINIUMBLADE355	355mm Evolution Aluminium Circular Saw Blade

Evolution Rage Blades



Features

- Multi-purpose tungsten carbide tipped blade.
- Ideal for cutting mild steel (up to 6mm) Aluminium, Plastics, Wood (even wood containing embedded nails).
- For use only with RAGE saw.

Product Code	Description
EVORAGEBLADE185	185mm Evolution Rage Multi-Purpose Blade
EVORAGEBLADE210	210mm Evolution Rage Multi-Purpose Blade
EVORAGEBLADE255	255mm Evolution Rage Multi-Purpose Blade
EVORAGEBLADE355	355mm Evolution Rage Multi-Purpose Blade

Evolution Diamond Blades



Features

- Designed specifically for tile cutting including Ceramic, Limestone, Marble, Natural Stone, Porcelain & Slate.
- Evolution cutting technology. Hardened blade body ensures the blade runs truer for longer.

Product Code	Description
EVODIAMONDBLADE185	185mm Evolution Diamond Blade
EVODIAMONDBLADE210	210mm Evolution Diamond Blade
EVODIAMONDBLADE255	255mm Evolution Diamond Blade
EVODIAMONDBLADE355	355mm Evolution Diamond Blade

Hand Tools.

Mastic and Rivet Guns



Product Code	Features
MASTICGUN310	Mastic gun suitable for use with 310ml tubes
MASTICHUN380	Mastic gun suitable for use with 380ml tubes
LAZYTONGRIVETER	Single pull-action riveter for fast repetitive riveting. Supplied with 5 exchangeable nozzles for: 3.2, 4.0, 4.8 and 6.4mm diameter rivets.
AMTECHRIVETER	Load & reject rivets easily with the swivel head rivet gun. Features a 360° rotating head. To suit 3.2, 4.0 and 4.8mm diameter rivets

Cutting Tools



Product Code	Features
TRIMKNIFE	Retractable knives take stanley type trimming blades
DOLPHINSTYLEKNIFE	Retractable knives take stanley type trimming blades
SNAPOFFBLADES	Replacement blades for heavy duty utility cutters
UTILITYKNIFEBLADES	10 Pack utility knife blades

Tin Snips



Features

- Left Hand or Right Hand Cut.
- Cut from tight curve to straight.
- Cuts low carbon cold rolled steel.
- Self-opening action for fast, effortless feed, with a built in convenient, protective safety latch.

Product Code	Description
TINSNIPSLEFT	Wiss Tin Snips Left Hand
TINSNIPSRIGHT	Wiss Tin Snips Right Hand
TINSNIPSSTRAIGHT	Wiss Tin Snips Straight

Bolt Cutters



Product Code	Features
BOLTCUTTERS600	To cut through bolts, padlocks, chains and wires

Hand Tools.

Paint Brushes



Features

- Quality paint & varnish brush, made with a mixture of pure black bristle and synthetic filaments for extra durability.
- Textured maroon plastic American style handle with stainless steel ferrule.

Product Code	Description
PAINTBRUSH1.0	Paint Brush 1 inch
PAINTBRUSH1.5	Paint Brush 1.5 inch
PAINTBRUSH2.0	Paint Brush 2 inch
PAINTBRUSH3.0	Paint Brush 3 inch
PAINTBRUSHSQ0.5	Paint Brush Square 0.5 inch
PAINTBRUSHSQ1.0	Paint Brush Square 1 inch
PAINTBRUSHSQ1.5	Paint Brush Square 1.5 inch
PAINTBRUSHSQ4.0	Paint Brush Square 4 inch
PAINTBRUSHNO6	No.6 Artist Paint Brush. Professional quality. A blend of soft hair
PAINTBRUSHSET7PCS	7 Piece Paint Brush Set. 7 piece Paint Brush set – various sizes
PAINTBRUSHSET10PCS	10 Piece Paint Brush Set. 10 piece Paint Brush set – various sizes

Tape Measures



Features

- Metric & Imperial scale with belt hook.
- 25mm blade.

Product Code	Description
TAPEMEASURE3	3M Tape Measure
TAPEMEASURE5	5M Tape Measure
TAPEMEASUREHIVIS5	5M Tape Measure – Hi Vis
TAPEMEASURE8	8M Tape Measure
TAPEMEASURE10	10M Tape Measure

PPE.

Gloves



Features

- Handling of fine products in a dry, slightly greasy or soiled environment.
- 10 pairs per pack.

Product Code	Description
GLOVESWORKEASY8	Honeywell Workeasy Black PU Poly Work Gloves Size 8
GLOVESWORKEASY9	Honeywell Workeasy Black PU Poly Work Gloves Size 9
GLOVESWORKEASY10	Honeywell Workeasy Black PU Poly Work Gloves Size 10
GLOVESWORKEASY11	Honeywell Workeasy Black PU Poly Work Gloves Size 11

Safety Glasses



Product Code	Description	Features
SAFETYGLASSES+CORD	Safety Glasses With Cord	Sport style wrap around safety spec with clear anti scratch lens and free lanyard
SAFETYSUNGLASSES	Safety Sunglasses with Cord	Sports style wrap around safety sunglasses with smoked anti scratch lens and free lanyard
SAFETYGOOGLES	Safety Goggles	Soft and lightweight PVC frame comfortable for wearing. Indirect vent

Safety Boots



Features

- 4 D-ring boot, dual density PU with 200 Joule steel toe cap.
- Steel midsole protection and shock absorber heel.
- Anti-static, Slip-resistant Leather upper.
- Available in sizes 5-12.

Product Code	Description
SAFETYBOOTSCHUKKA	Click Lightweight Safety Chukka Boots

Safety Boots



Features

- Buffalo Nubuck upper with rubber/phylon outsole.
- Puncture resistant midsole.
- Removable dual density PU comfort insole.
- Top quality premium hide, long lasting.
- Lightweight and flexible with PU collar for comfort.
- Available in sizes 7-12.

Product Code	Description
SAFETYBOOTSSTANLEYBROWN	Stanley Tradesman Brown Safety Boots
SAFETYBOOTSSTANLEYHONEY	Stanley Tradesman Honey Safety Boots

PPE.

Kneepads



Features

- Heavy-Duty Smooth Cap formed to keep padding around knee.
- Patented Grooved Cap Designed helps prevent thread abrasion.
- Ballistic Poly Material provides strength and durability.
- Slip-Buckle Fastener System with Adjustable straps.
- Comfortable Foam Padding for all-day wear.

Product Code	Description
KNEEPADSHAVYDUTY	Dewalt Heavy-Duty Smooth Cap Kneepads

Kneepads



Features

- Ballistic Poly Material provides strength and durability.
- Layered Gel Technology over Thick closed-Cell Foam Padding surrounds knee for the ultimate in support and comfort.
- Non-Skid Heavy-Duty Cap designed for added stability and wear.
- Large Adjustable Neoprene Strap for comfort and stability.

Product Code	Description
KNEEPADSPROFESSIONAL	Dewalt Professional Kneepads with Layered Gel

Safety Helmet



Features

- UV-resistant high density polypropylene safety helmet.
- Polyamide lining: 3 textile bands with 8 fixing points.
- Sweat band.
- Manual adjustment : head measurement 53 to 61 cm. 2 possible positions of the head measurement (top/ low) for better comfort.

Product Code	Description
SAFETYHELMETWHITE	PTI White Safety Helmet

HI VIS Jackets



Features

- 100% Polyester, Sizes M-XXL.

Product Code	Description
HIVISJACKET	Click High Visibility Bomber Jacket
HIVISWAISTORANGE	Click High Visibility Waistcoat Orange
HIVISWAISTYELLOW	Click High Visibility Waistcoat Yellow

Site Accessories.

Polypropylene Rope



Features

- Blue Polypropylene rope in 220 metre coils.

Product Code	Description
POLYROPE6X220	6mm x 220m Polypropylene Rope Blue
POLYROPE8X220	8mm x 220m Polypropylene Rope Blue
POLYROPE10X220	10mm x 220m Polypropylene Rope Blue
POLYROPE12X220	12mm x 220m Polypropylene Rope Blue

Mixed Bag of Rags



Product Code	Description
RAGS	Mixed Bag of Rags 10kg

Wonder Wipes



Features

- Specially formulated to clean hands, tools and surfaces from wet and semi-cured paint, sealant, adhesive, bitumen, expanding foam, oil, grease and even silicone.
- Particularly useful when there is no water on site.

Product Code	Description
WONDERWIPES	Everbuild Wonder Wipes - Red Tub of 100

Rubble Sacks



Product Code	Description
RUBBLESACKS	Box of 200 rubble sacks

Electrical Equipment.

110 Volt 16 Amp 3 Way Adapter



Features

- 110V 16A 3-way multi-socket for splitting single line input to three separate outputs.
- Suitable for running multiple power tools.

Product Code	Description
110V3WAYADAPTOR	110 Volt 16 Amp 3 Way Adaptor

110 Volt 16 Amp Cable Reel



Features

- This heavy-duty industrial open drum reel is manufactured from a polypropylene drum and a tubular steel frame.
- 2 outlets and 1.5mm artic cable.
- Fitted with a 16 Amp 110V plug.

Product Code	Description
110VCABLEREEL25	110 Volt 16 Amp Cable Reel 25 Metre
110VCABLEREEL50	110 Volt 16 Amp Cable Reel 50 Metre

110 Volt 16 Amp 4 Way Adapter



Features

- 110V 16A 4-way adaptor outlet complete with 1.5mm Arctic Cable.

Product Code	Description
110V4WAYADAPTOR	110 Volt 16 Amp 4 Way Adaptor Outlet 4 Sockets

Extension Lead



Features

- Extensions leads fitted with 110V 16 Amp plug and socket.
- 1.5mm cable.

Product Code	Description
110VEXTLEAD10	110 Volt Extension Lead 10 Metre
110VEXTLEAD14	110 Volt Extension Lead 14 Metre
110VEXTLEAD25	110 Volt Extension Lead 25 Metre

Electrical Equipment.

110 Volt Industrial Plug



Features

- Heavy duty impact resistant for the site and industrial use.
- Captive terminal and cord clamp screws.
- IP44 rated.

110 Volt Industrial Socket



Features

- Heavy duty splashproof socket impact resistant to industrial use.
- Captive terminal and cord clamp screws.
- IP44 rated.

Product Code	Description
110VPLUG	110 Volt Industrial Plug

Product Code	Description
110VSOCKET	110 Volt Industrial Socket



FixingPoint.

183-205
Westgate Street
Gloucester
Gloucestershire
GL1 2RN

Head Office 01242 265 100

Walsall 01922 651 900

fixingpoint.com